

STATISTICAL REPORT

OF

GRADES AWARDED

2015-16/I



FEBRUARY-2016

Office of the Dean of Academic Affairs

Indian Institute of Technology Kanpur

LIST OF CONTENTS

S.No.	CONTENTS	Page No.
1	Figure 1: Distribution of all grades awarded to UG and PG students across the institute.	1
2	Figure 2: Distribution of all grades awarded to UG students	1
3	Figure 3: Distribution of all Core courses grades awarded to UG students	2
4	Figure 4: Distribution of all grades awarded to PG students	2
5	Figure 5: Distribution of all grades awarded to UG students	3
6	Figure 6: Distribution of all grades awarded to PG students	4
7	Figure 7: AE department distribution of grades awarded to UG students	5
8	Figure 8: BSBE department distribution of grades awarded to UG students	5
9	Figure 9: CE department distribution of grades awarded to UG students	6
10	Figure 10: CHE department distribution of grades awarded to UG students	6
11	Figure 11: CHM department distribution of grades awarded to UG students	7
12	Figure 12: CSE department distribution of grades awarded to UG students	7
13	Figure 13: EE department distribution of grades awarded to UG students	8
14	Figure 14: ES department distribution of grades awarded to UG students	8
15	Figure 15: HSS department distribution of grades awarded to UG students	9
16	Figure 16: IME department distribution of grades awarded to UG students	9
17	Figure 17: ME department distribution of grades awarded to UG students	10
18	Figure 18: MSE department distribution of grades awarded to UG students	10
19	Figure 19: MTH department distribution of grades awarded to UG students	11
20	Figure 20: PHY department distribution of grades awarded to UG students	11
21	Figure 21: PSE department distribution of grades awarded to UG students	12
22	Figure 22: AE department distribution of grades awarded to PG students	13
23	Figure 23: BSBE department distribution of grades awarded to PG students	13
24	Figure 24: CE department distribution of grades awarded to PG students	14
25	Figure 25: CHE department distribution of grades awarded to PG students	14
26	Figure 26: CHM department distribution of grades awarded to PG students	15
27	Figure 27: CSE department distribution of grades awarded to PG students	15
28	Figure 28: EE department distribution of grades awarded to PG students	16
29	Figure 39: ES department distribution of grades awarded to PG students	16
30	Figure 30: HSS department distribution of grades awarded to PG students	17
31	Figure 31: IME department distribution of grades awarded to PG students	17
32	Figure 32: Design department distribution of grades awarded to PG students	18
33	Figure 33: ME department distribution of grades awarded to PG students	18
34	Figure 34: MSE department distribution of grades awarded to PG students	19
35	Figure 35: MSP department distribution of grades awarded to PG students	19
36	Figure 36: MTH department distribution of grades awarded to PG students	20
37	Figure 37: PHY department distribution of grades awarded to PG students	20
38	Figure 38: PSE department distribution of grades awarded to PG students	21

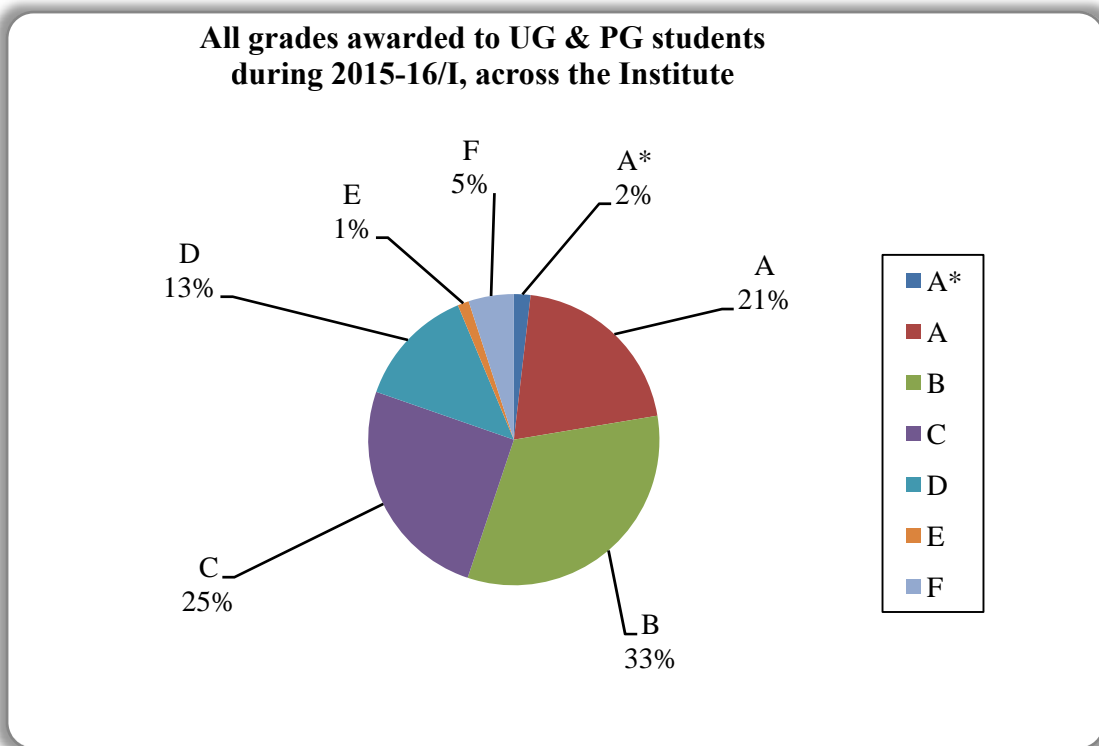


Figure 1
Distribution of all grades awarded to UG and PG students across the institute

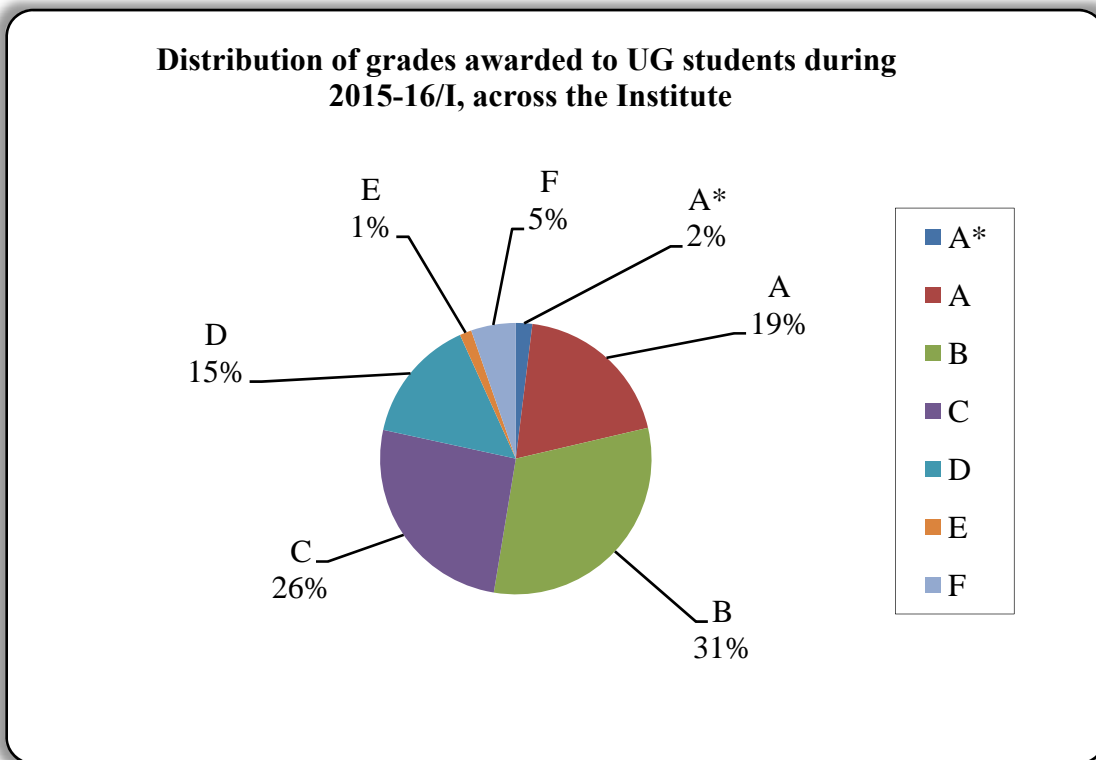


Figure 2
(UG students) include all students who have a 5 or 6-digit roll number
(All B.Tech, Msc-2yr, BT part of BT-MT)

Distribution of grades awarded to core courses during 2015-16/I, across the Institute

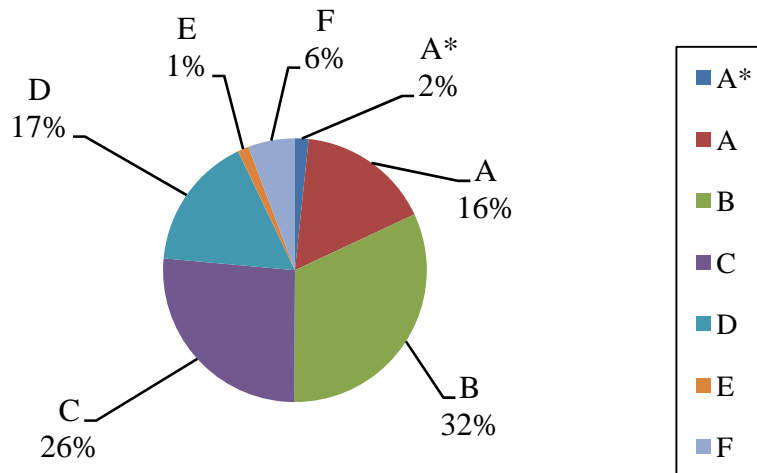


Figure3:Data for Core course numbers: ESO202A, ESO206A, LIF101A, ESO208A, TA101A, ESO204A, CHM101A, CHM102A, ESC101A, ESO207A, ESC201A, ESO203A, ART103A, ART105A, ECO101A, ENG112A, ENG124A, PHI141A, PHI143A, SOC171A, SOC171B, ESO201A, ESO209A, TA202A, ESO205A, TA201A, MSO202A, MSO203B, MTH101A, MTH102A, PHY101A, PHY102A, PHY103A

Distribution of grades awarded to PG students during 2015-16/I, across the Institute

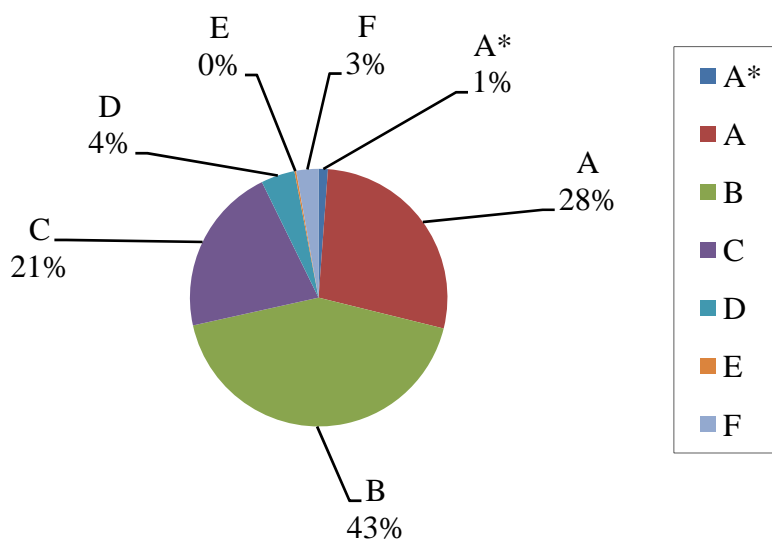


Figure 4:
PG students include all students (All M.Tech, MT Part of BT-MT, PhD, MBA, M.Des, VLFM)

Department wise distribution of grades awarded to UG students during 2015-16/I

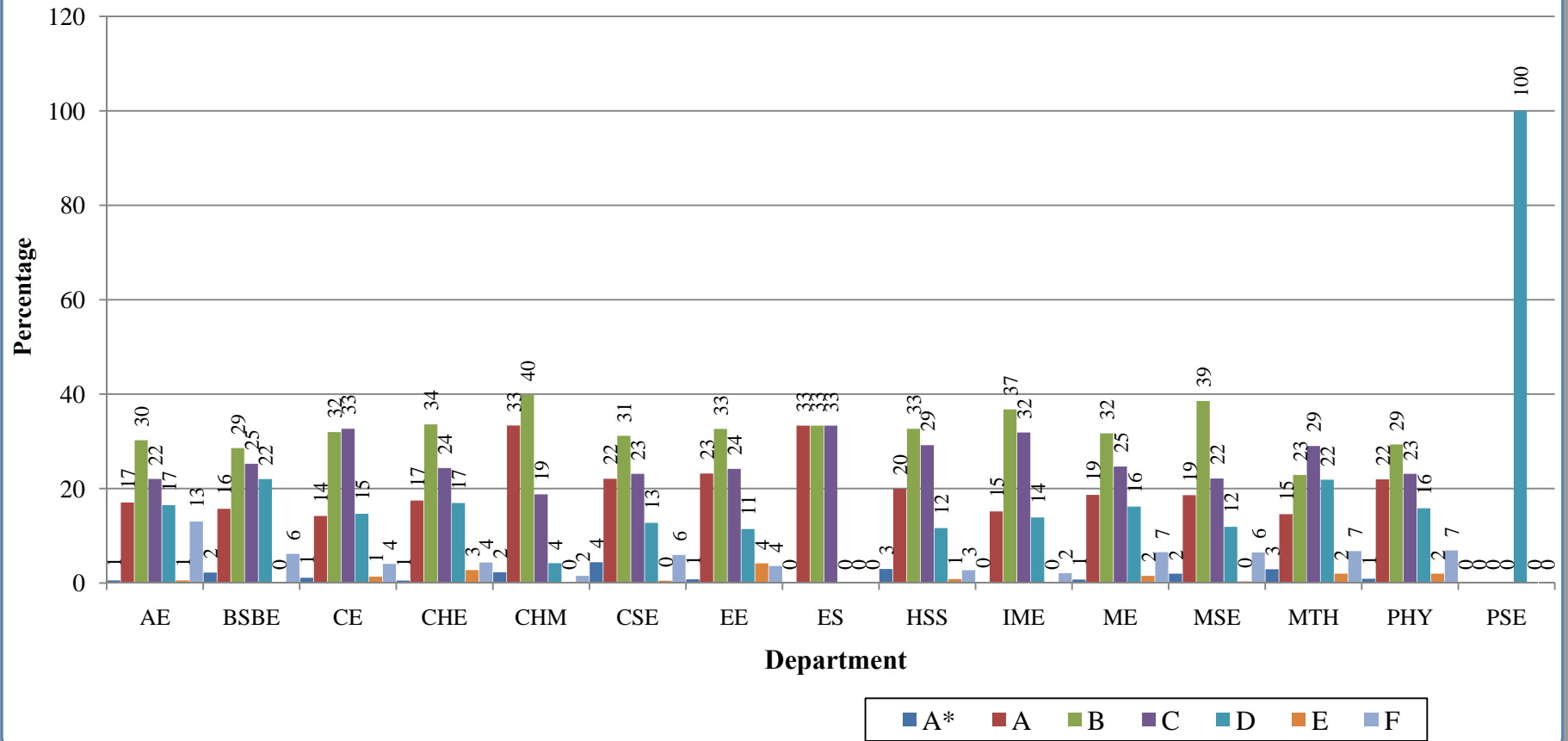


Figure 5 Distribution of all grades awarded to UG students

Department wise distribution of grades awarded to PG students during 2015-16/I

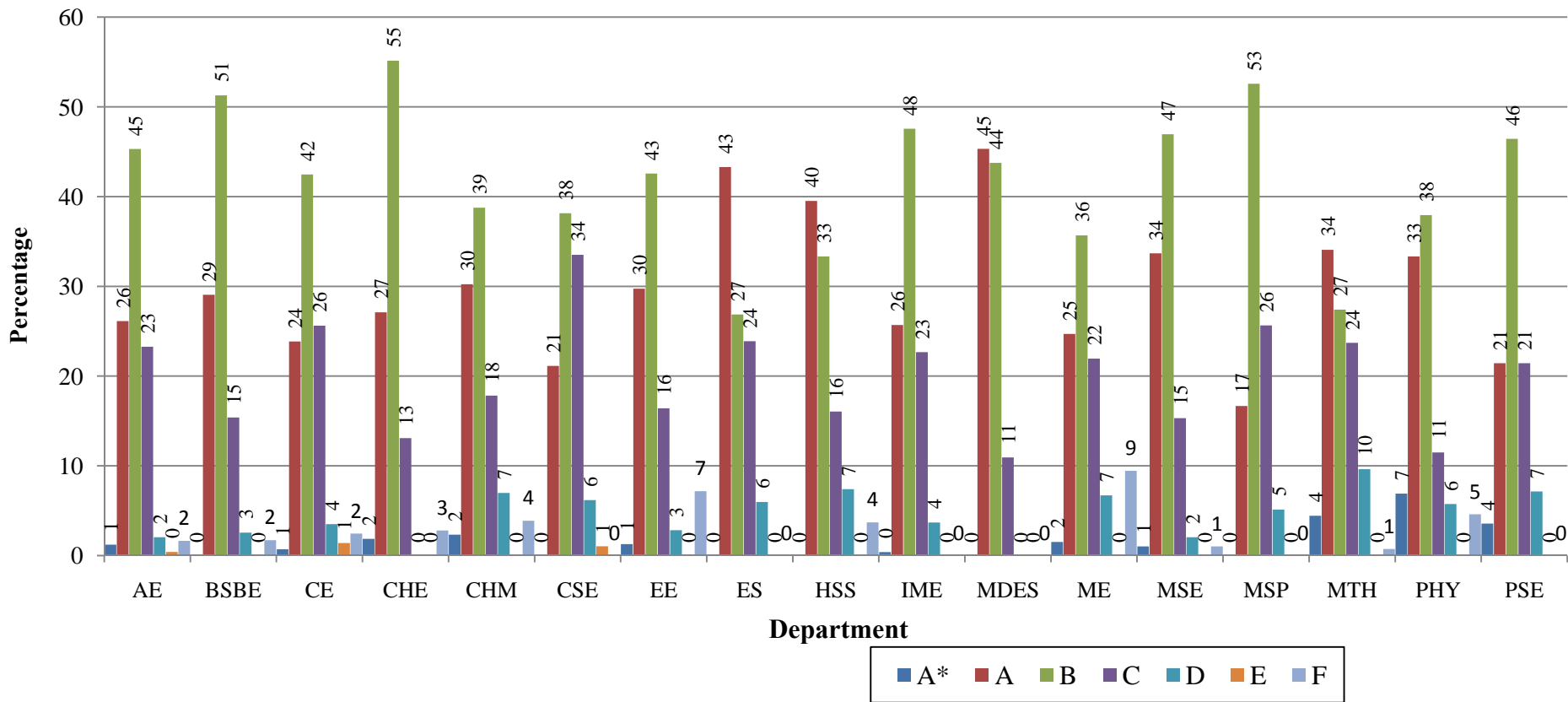


Figure 6: Distribution of all grades awarded to PG students

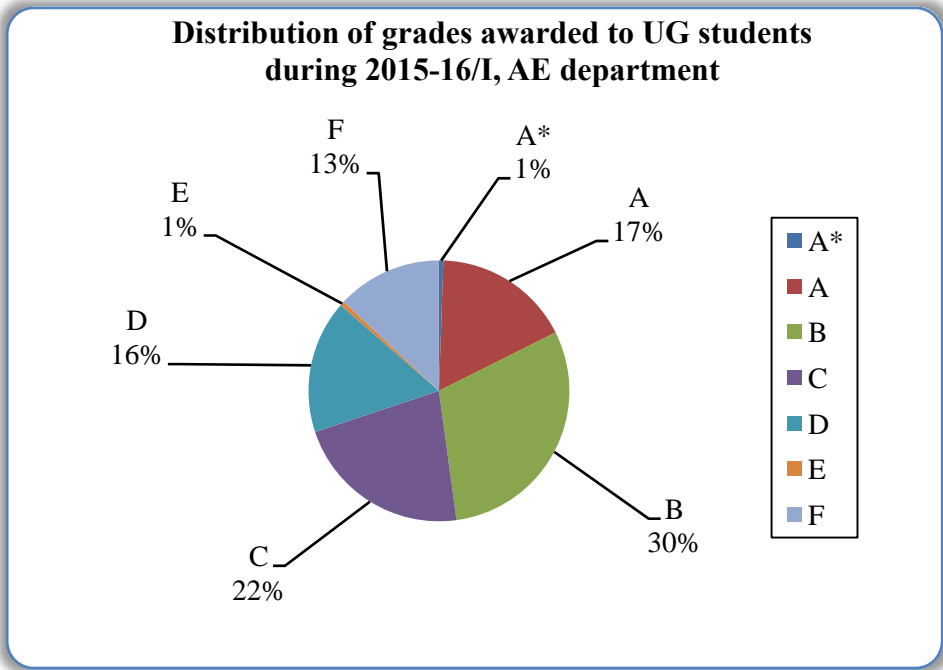


Figure 7

Data for course numbers: AE201A, AE311A, AE321A, AE331A, AE371A, AE441A, AE451A, AE461A, AE471A, AE605A, AE608A, AE614A, AE618A, AE663A, AE664A, AE684A, AE686A, AE777A, ESO202A

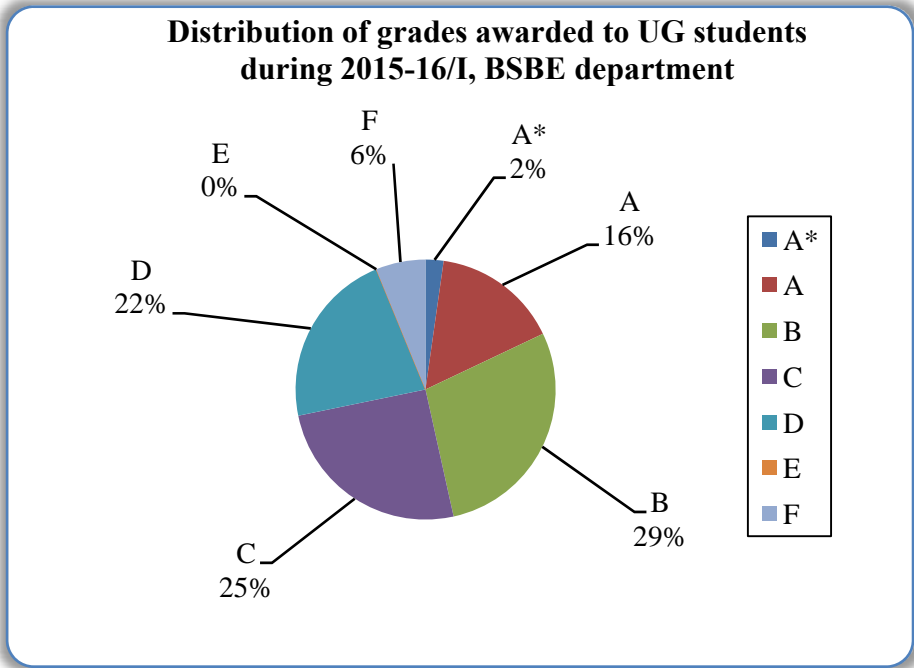


Figure 8

Data for course numbers: BSE211A, BSE311A, BSE312A, BSE398A, BSE411A, BSE412A, BSE492A, BSE498A, BSE611A, BSE651A, BSE656A, BSE682A, ESO206A, LIF101A

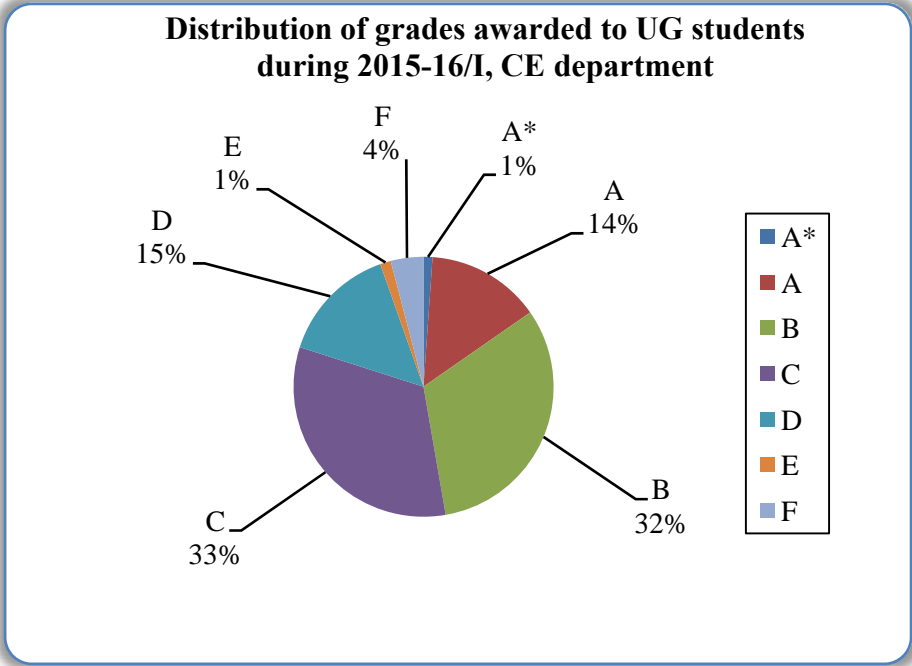


Figure 9

Data for course numbers: CE211A, CE321A, CE331A, CE351A, CE361A, CE371A, CE441A, CE442A, CE451A, CE471A, CE481A, CE491A, CE492A, CE614A, CE620A, CE621A, CE623A, CE671A, CE677A, CE678A, CE688A, CE689A, EEM602A, EEM603A, EEM606A, ESO208A, TA101A

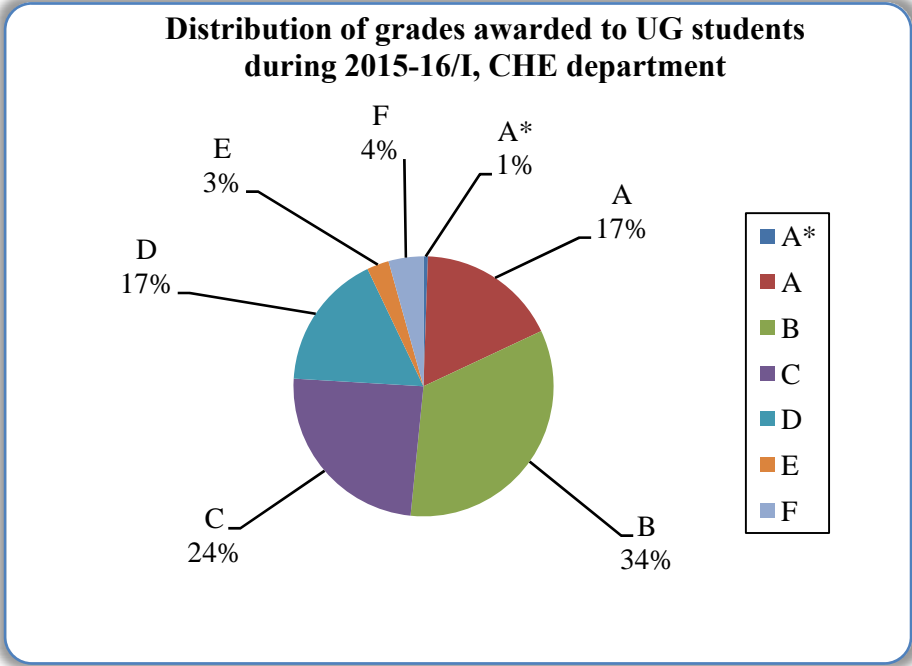


Figure 10

Data for course numbers: CHE251A, CHE312A, CHE313A, CHE349A, CHE352A, CHE381, CHE453A, CHE492A, CHE495, CHE497A, CHE611A, CHE621A, CHE631A, CHE633A, CHE641A, CHE670A, CHE673A, CHE678A, CHE684A, CHE688A, ESO204A

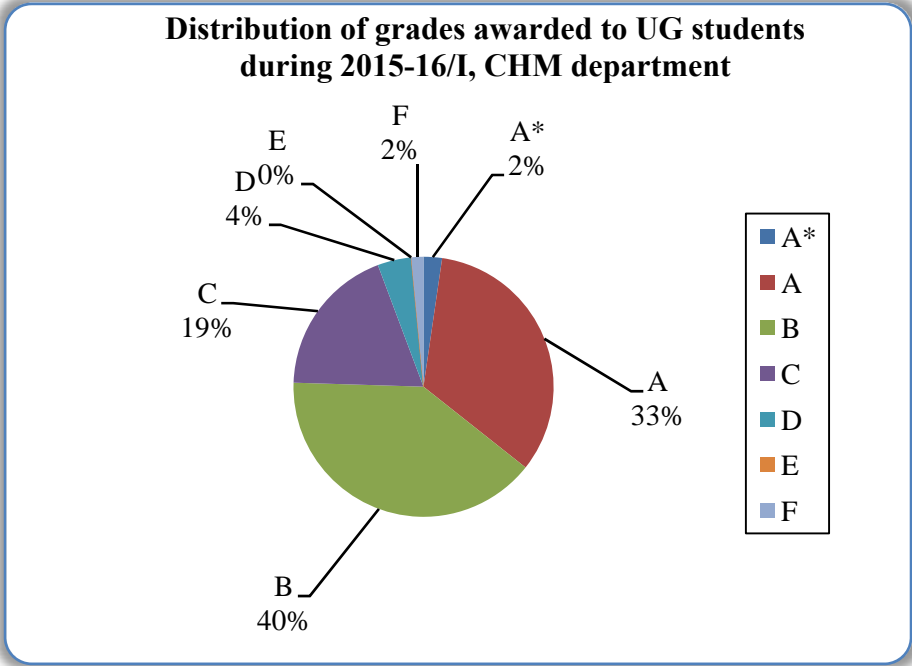


Figure 11
 Data for course numbers: CHM101A, CHM102A, CHM203A, CHM303A, CHM305A, CHM321A, CHM345A, CHM391A, CHM401A, CHM421A, CHM423A, CHM441A, CHM491A, CHM503A, CHM521A, CHM600A, CHM602A, CHM611A, CHM621A, CHM631A, CHM646A, CHM650A, CHM654A, CHM664A, CHM684A, CHM691A, CHM698A, CHM700.

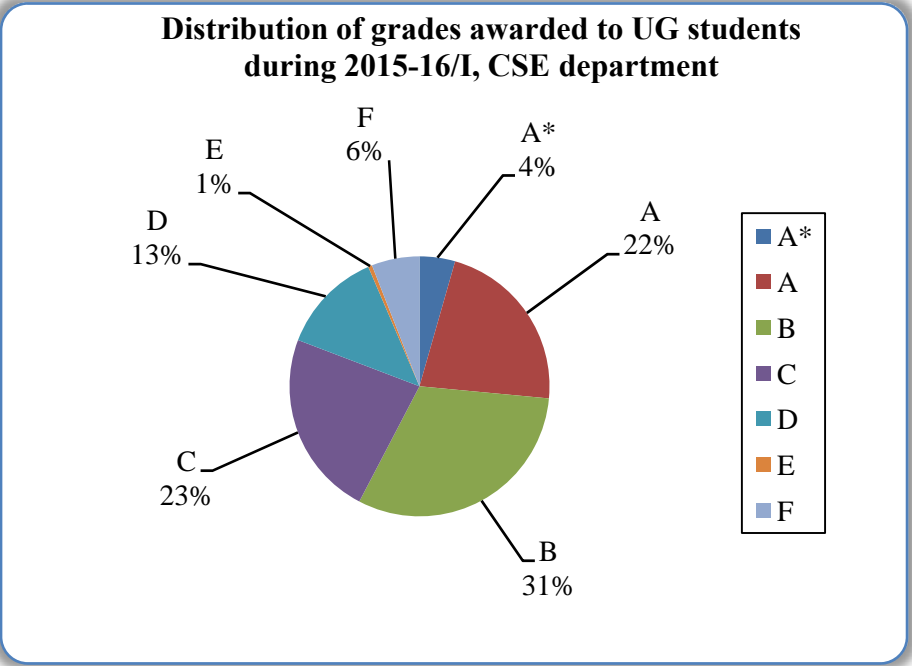


Figure 12
 Data for course numbers: CS201A, CS202A, CS203B, CS252A, CS330A, CS340A, CS345A, CS350A, CS360A, CS395A, CS425A, CS498A, CS615A, CS631A, CS653A, CS671A, CS678A, CS720, ESC101A, ESO207A

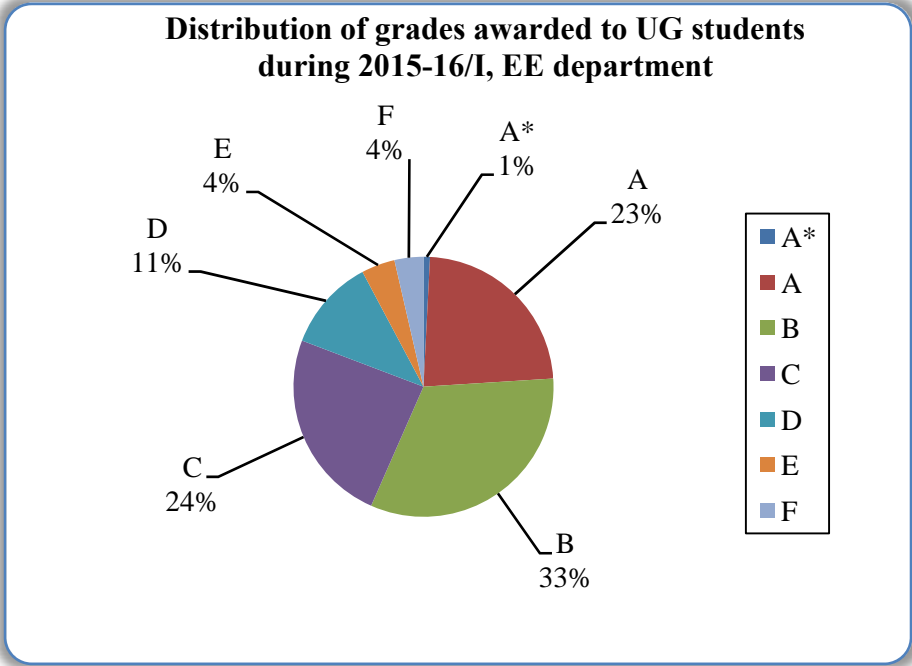


Figure 13

Data for course numbers: EE200A, EE320A, EE330A, EE370A, EE380A, EE391A, EE442A, EE480A, EE491A, EE492, EE601A, EE602A, EE604A, EE610A, EE612A, EE614A, EE616A, EE618A, EE621A, EE629A, EE644A, EE650A, EE653A, EE654A, EE660A, EE663A, EE664A, EE667A, EE673A, EE698A, ESC201A, ESO203A

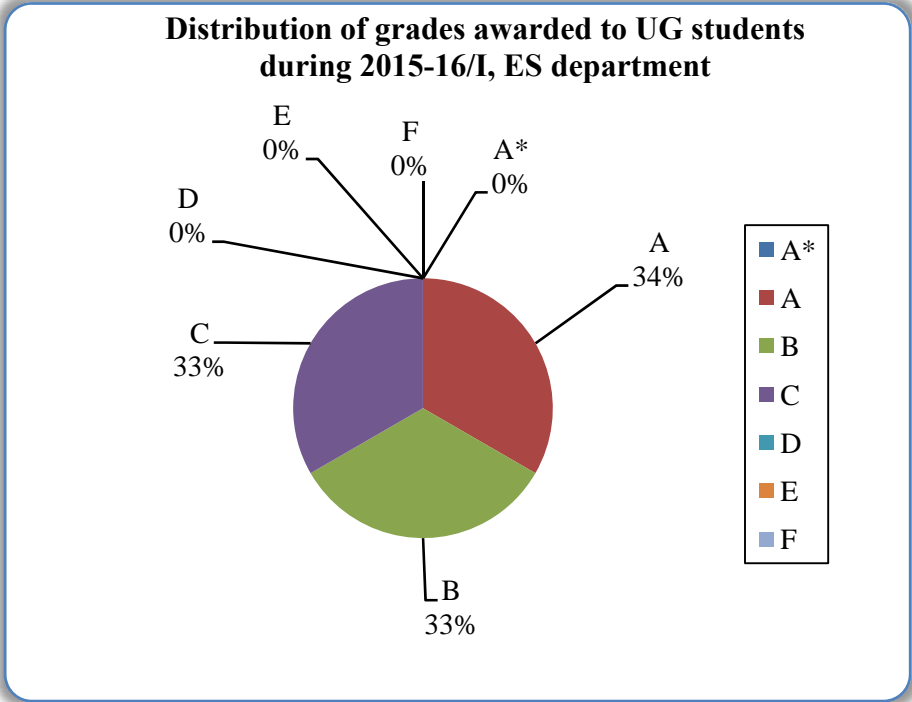


Figure 14

Data for course numbers: ES640A, ES655A

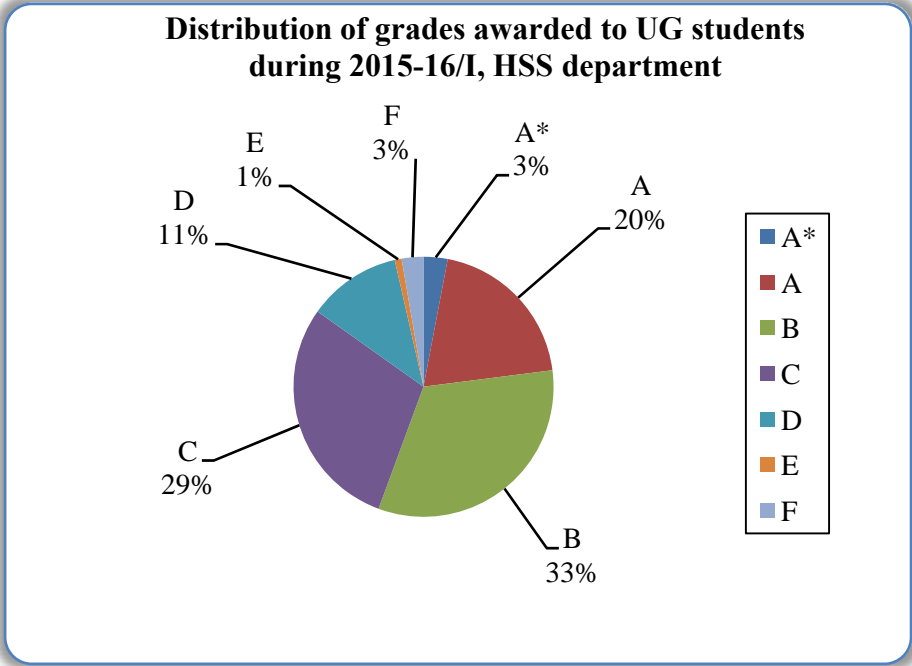


Figure 15

Data for course numbers: ART103A, ART105A, ART401A, ART406A, ECO101A, ECO201A, ECO221A, ECO301A, ECO311, ECO321A, ECO341A, ECO398A, ECO411A, ECO412A, ECO523A, ECO535A, ECO572A, ECO760A, ENG112A, ENG124A, ENG432A, ENG450A, ENG456A, ENG457A, PHI141A, PHI143A, PHI446A, PHI450A, PHI751A, PSY151A, PSY152A, PSY451A, PSY454A, PSY458A, PSY468A, SOC171A, SOC171B, SOC470A, SOC473A, SOC479A, SOC486A

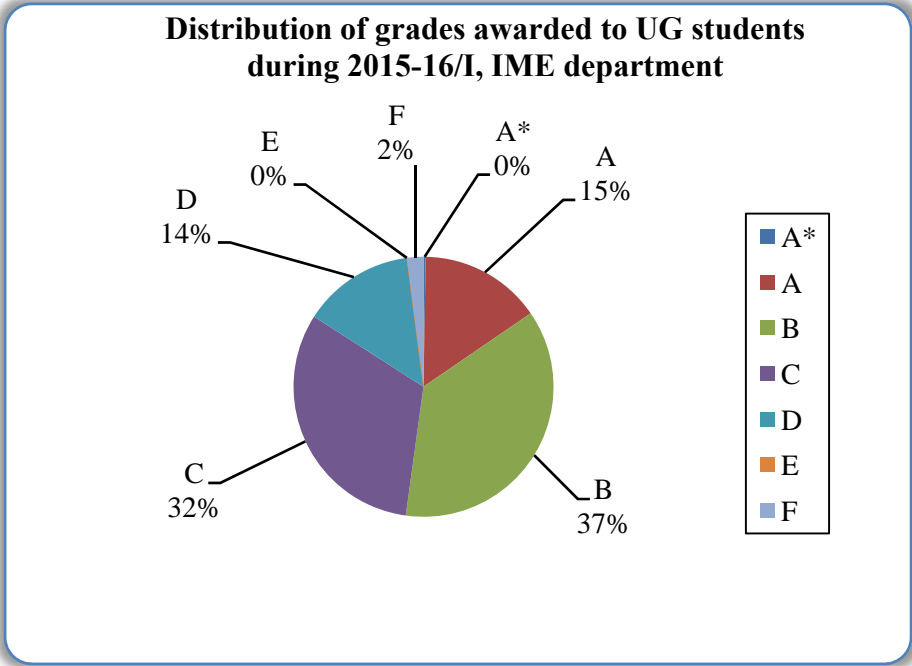


Figure 16

Data for course numbers: IME602A, IME603A, IME636A, IME639A, IME692A, MBA601A, MBA606A, MBA611A, MBA622A, MBA623A, MBA631A, MBA637A, MBA646A, MBA647A, MBA649A, MBA664A, MBA679A, MBA683A, MBA685A, MBA699A

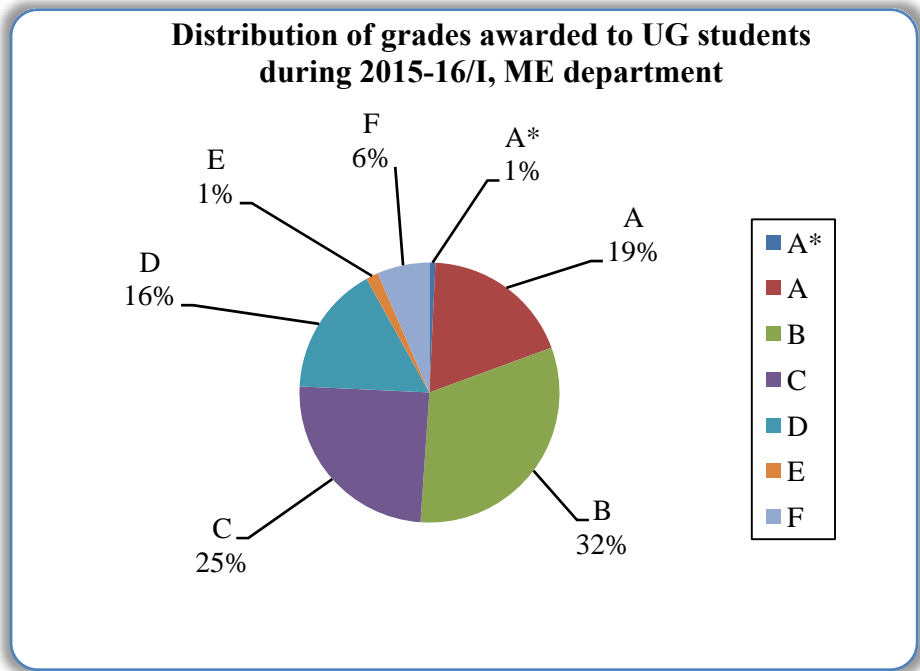


Figure 17

Data for course numbers: ESO201A, ESO209A, ME251A, ME301A, ME321A, ME352A, ME359A, ME361A, ME401A, ME451A, ME461A, ME621A, ME623A, ME630A, ME631A, ME641A, ME647A, ME662A, ME681A, ME685A, ME701A, ME721A, ME723A, ME756A, ME761A, ME763A, ME769A, NT611A, NT602A, TA202A

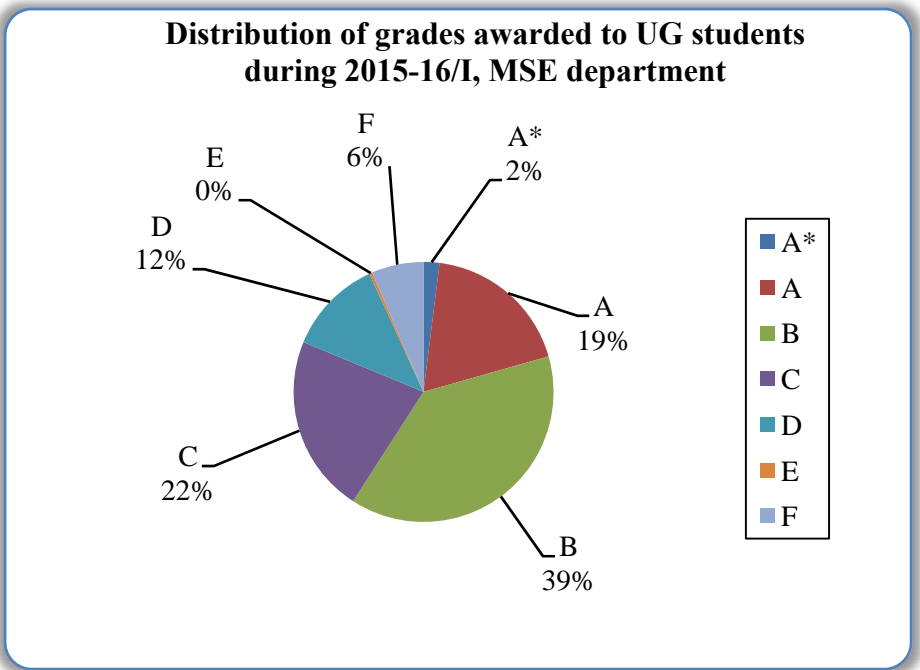


Figure 18

Data for course numbers: ESO205A, MSE201A, MSE301A, MSE302A, MSE303A, MSE311A, MSE313A, MSE349A, MSE497A, MSE608A, MSE628A, MSE629A, MSE642A, MSE658A, MSE659A, MSE670A, MSE671A, MSE682A, MSE693A, MSE694A, TA201A

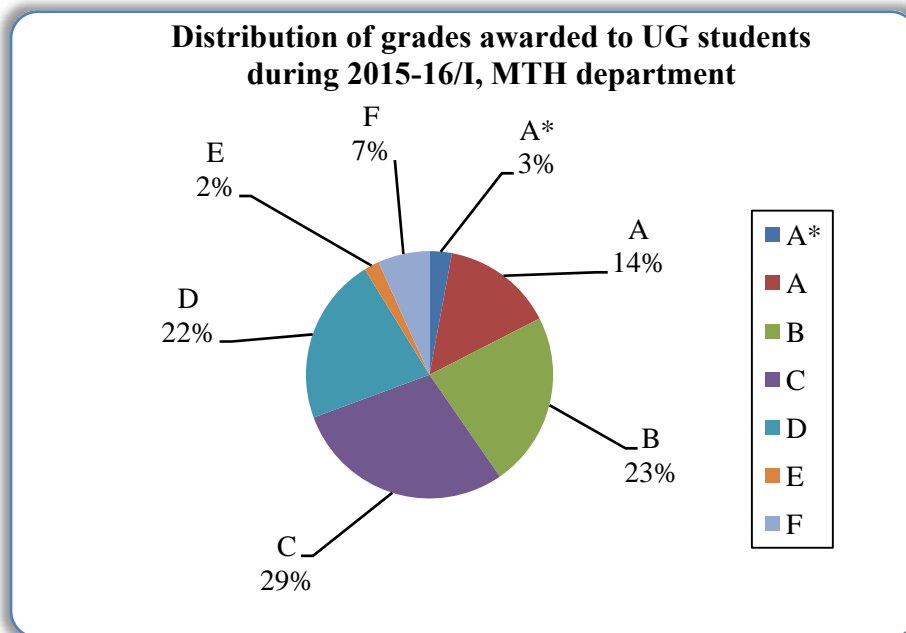


Figure 19

Data for course numbers: MSO202A, MSO203B, MTH101A, MTH102A, MTH201A, MTH204A, MTH301A, MTH305A, MTH392A, MTH393A, MTH401A, MTH403A, MTH405A, MTH409A, MTH412A, MTH415A, MTH417A, MTH423A, MTH424A, MTH425A, MTH428A, MTH515A, MTH517A, MTH523A, MTH598A, MTH610A, MTH611A, MTH612A, MTH620A, MTH621A, MTH648A, MTH649A, MTH658A, MTH691A, MTH701A, MTH755A, MTH781A

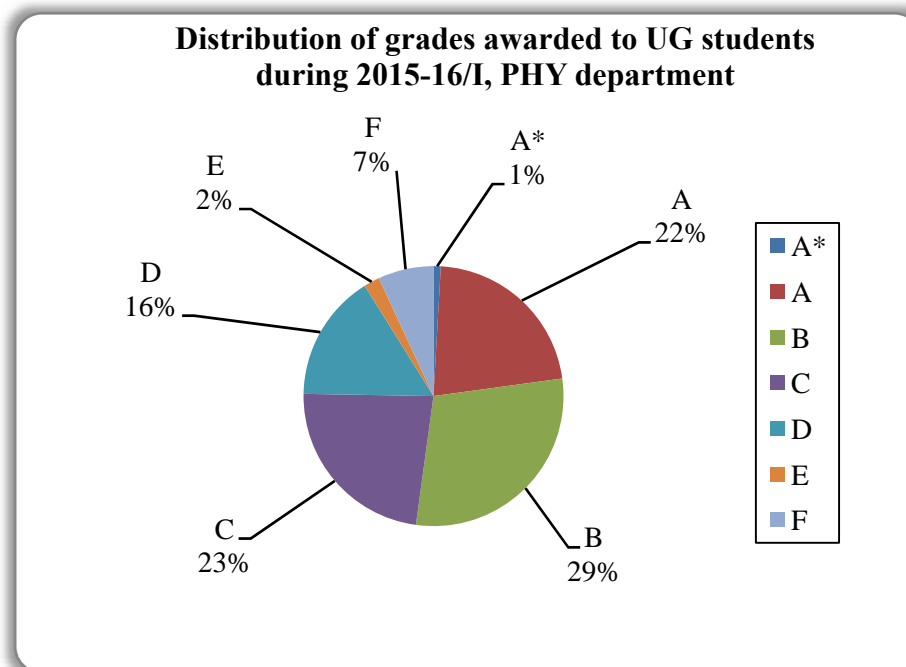


Figure 20

Data for course numbers: PHY101A, PHY102A, PHY103A, PHY224A, PHY301A, PHY305A, PHY315A, PHY400A, PHY401A, PHY407A, PHY421A, PHY431A, PHY441A, PHY461A, PHY462A, PHY500A, PHY501A, PHY543A, PHY552A, PHY555A, PHY556A, PHY563A, PHY565A, PHY566, PHY568, PHY590A, PHY598, PHY613A, PHY615A, PHY681A, PHY690G, PHY690M, PHY690X, PHY690Y

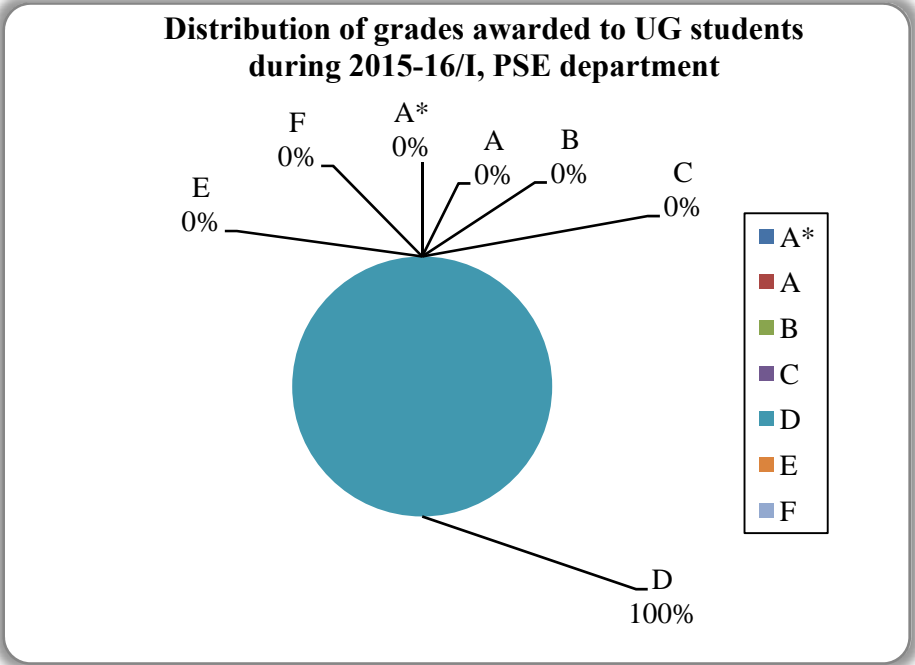


Figure 21
Data for course numbers: PSE602A, PSE603A

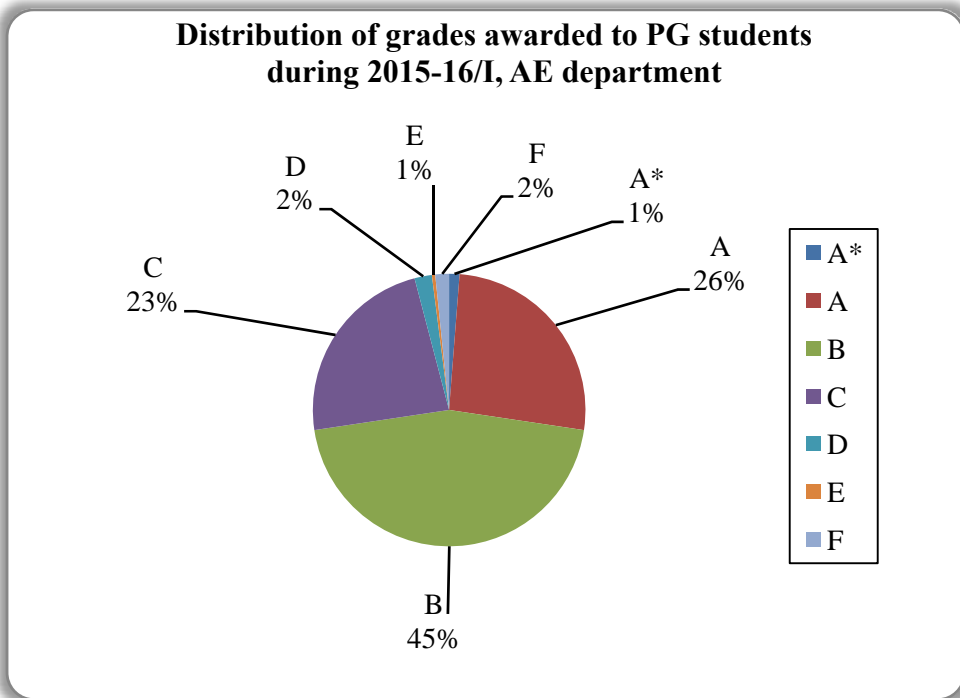


Figure 22

Data for course numbers: AE331A, AE461A, AE601A, AE602A, AE603A, AE605A, AE608A, AE610A, AE614A, AE618A, AE647A, AE663A, AE664A, AE670A, AE684A, AE686A, AE688A, AE754A, AE777A

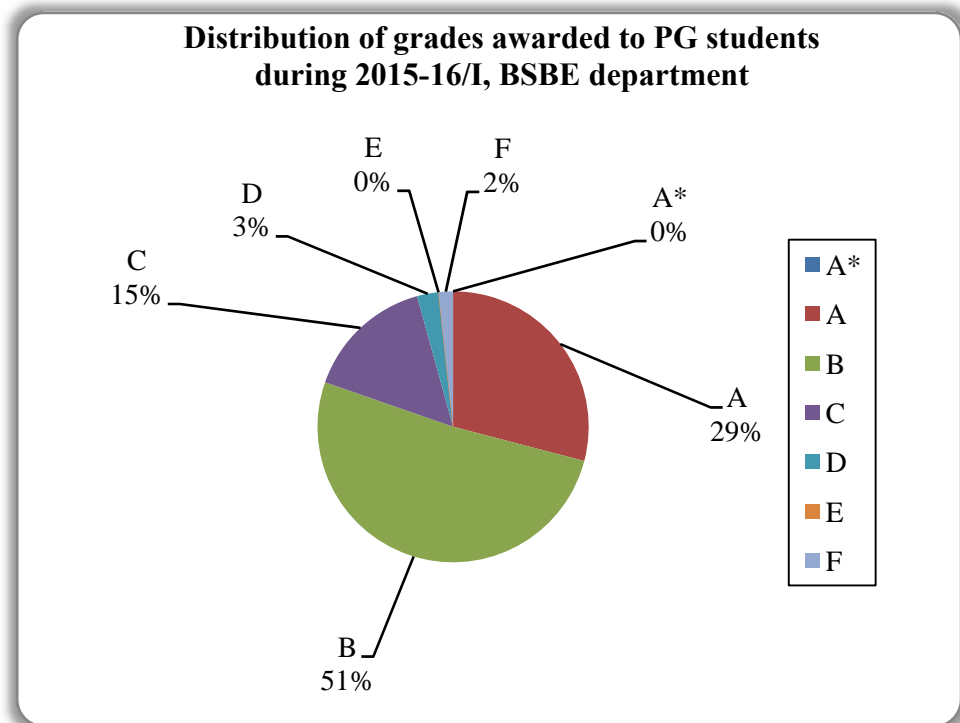


Figure 23

Data for course numbers: BSE492A, BSE611A, BSE613A, BSE631A, BSE651A, BSE655A, BSE656A, BSE682A

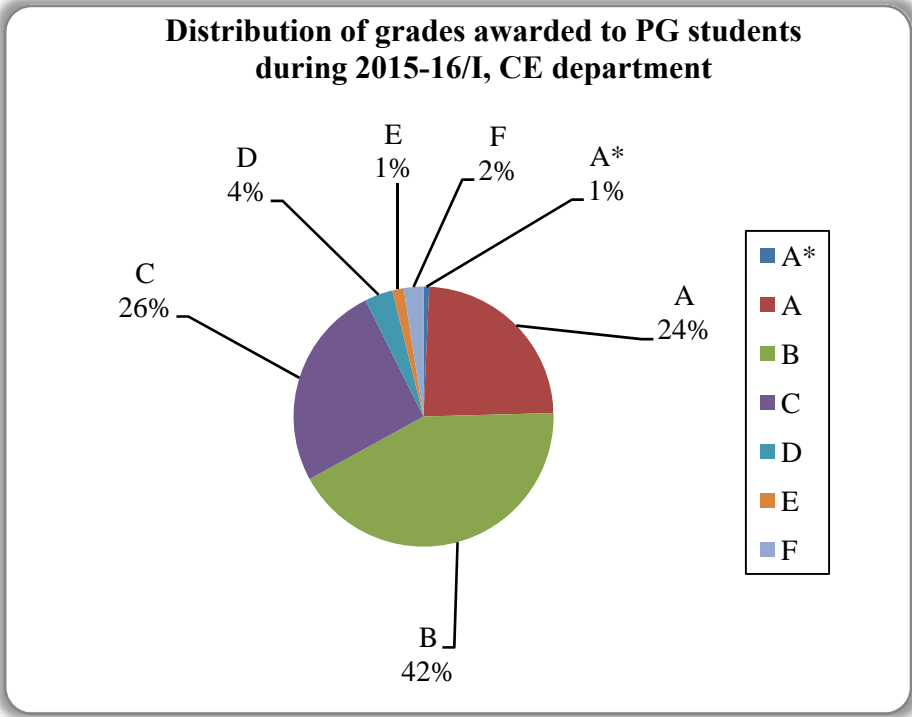


Figure 24

Data for course numbers: CE602A, CE610A, CE611A, CE614A, CE620A, CE621A, CE623A, CE631A, CE637A, CE638A, CE671A, CE677A, CE678A, CE683A, CE688A, CE689A, EEM602A, EEM603A, EEM606A

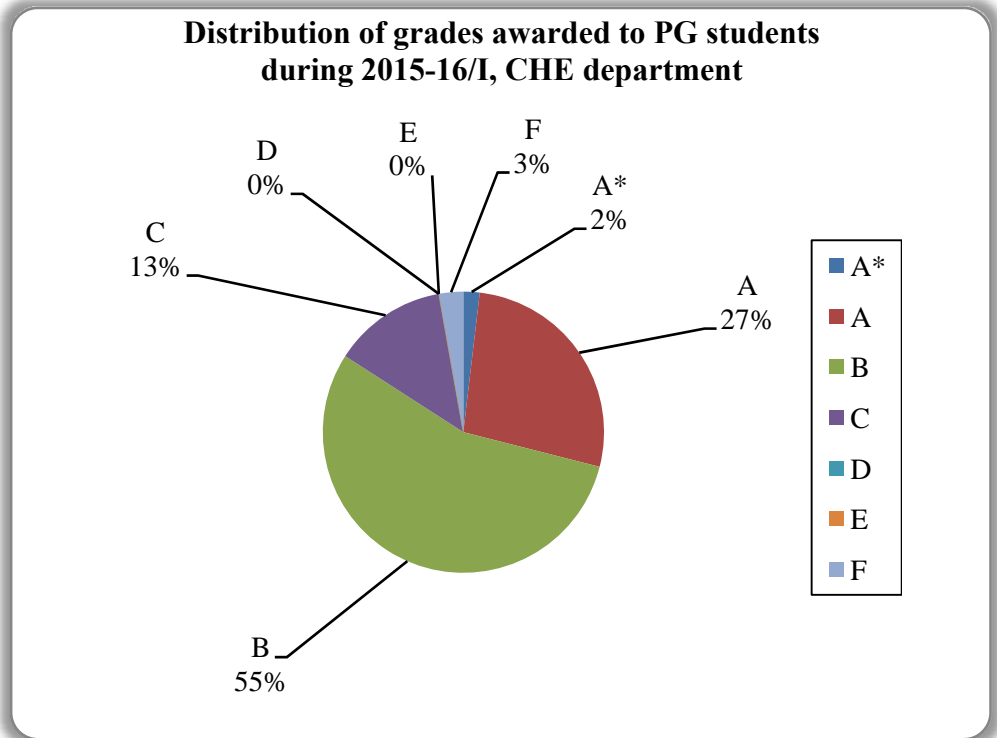


Figure 25

Data for course numbers: CHE601A, CHE611A, CHE621A, CHE631A, CHE633A, CHE641A, CHE670A, CHE673A, CHE675A, CHE678A, CHE688A

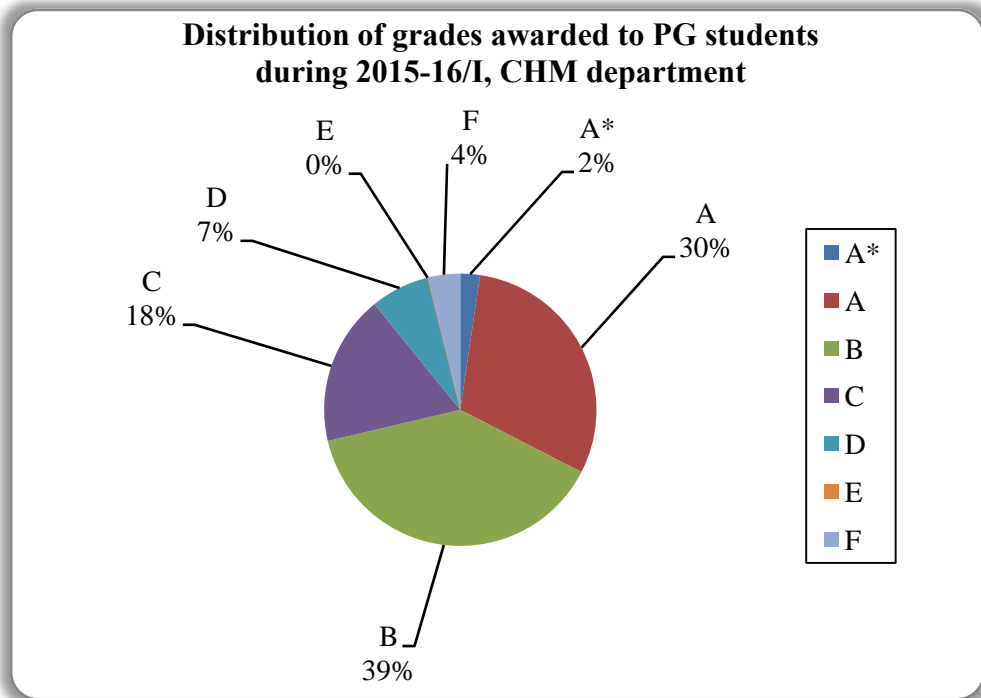


Figure 26

Data is for course numbers: CHM503A, CHM521A, CHM600A, CHM602A, CHM609A, CHM611A, CHM621A, CHM629A, CHM631A, CHM646A, CHM649A, CHM650A, CHM654A, CHM664A, CHM684A, CHM691A, CHM698A

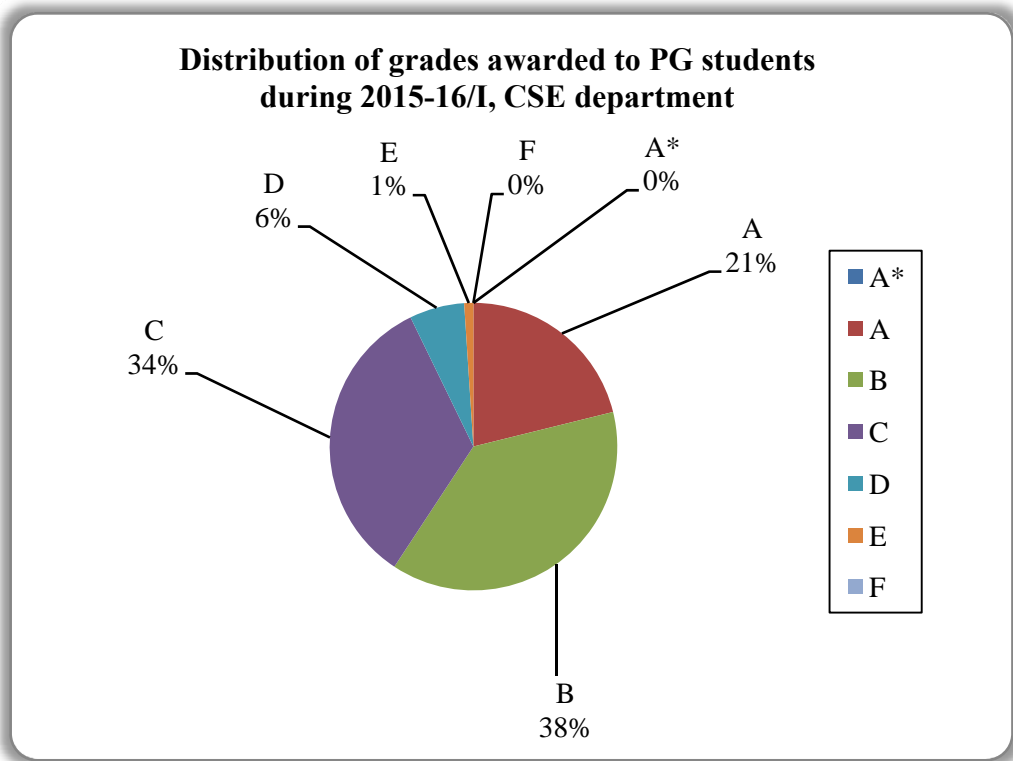


Figure 27

Data for course numbers: CS330A, CS340A, CS350A, CS601A, CS602A, CS615A, CS631A, CS639A, CS653A, CS671A, CS678A, CS697A, CS720A

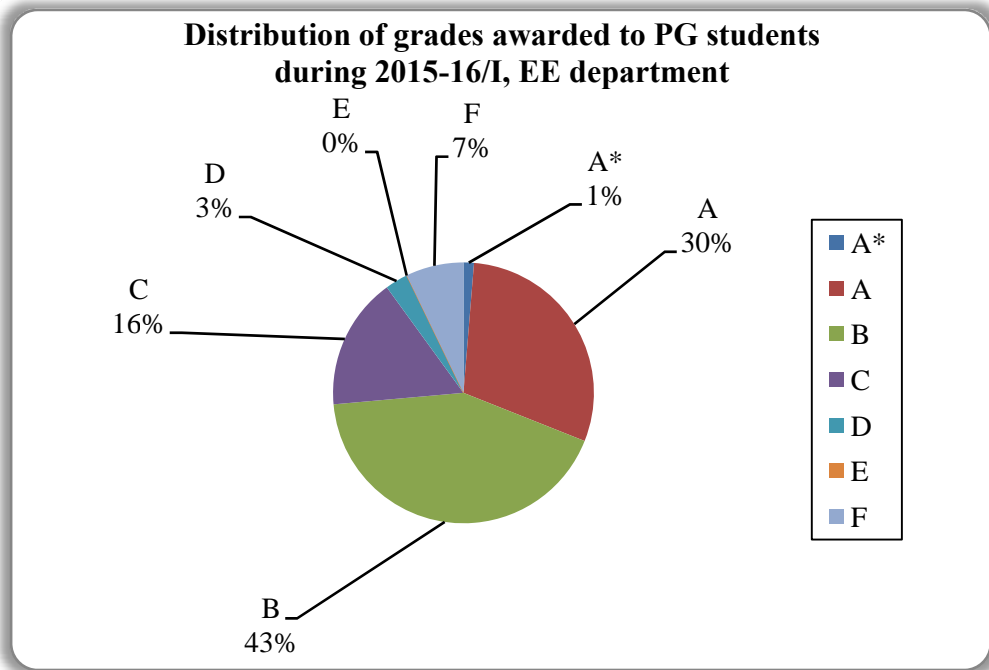


Figure 28

Data for course numbers: EE601A, EE602A, EE604A, EE605A, EE610A, EE612A, EE614A, EE616A, EE617A, EE618A, EE621A, EE629A, EE630A, EE632A, EE634A, EE641A, EE644A, EE645A, EE647A, EE650A, EE653A, EE654A, EE660A, EE663A, EE664A, EE667A, EE673A, EE698A, EE698E, EE698J

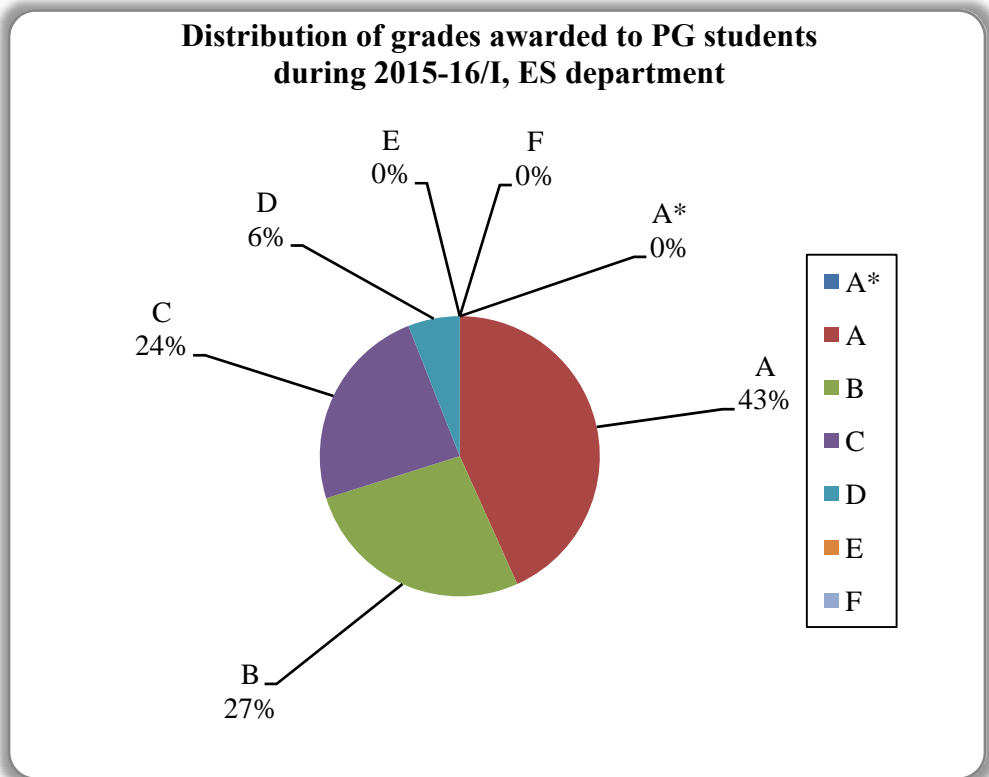


Figure 29

Data for course numbers: ES640A, ES642A, ES653A, ES655A

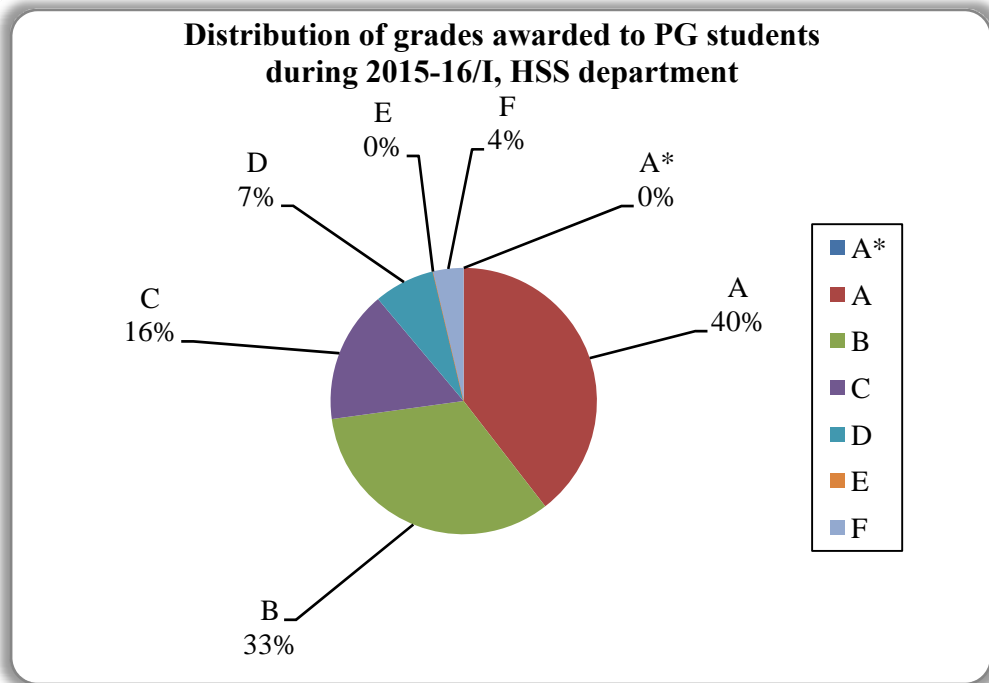


Figure 30

Data for course numbers: ART401A, ART406A, ECO535A, ECO572A, ECO732A, ECO737A, ECO750A, ECO760A, ENG457A, ENG715A, ENG742A, ENG753A, PHI751A, PHI758A, PHI774A, PHI782A, PSY720A, PSY774A, SOC470A, SOC751A

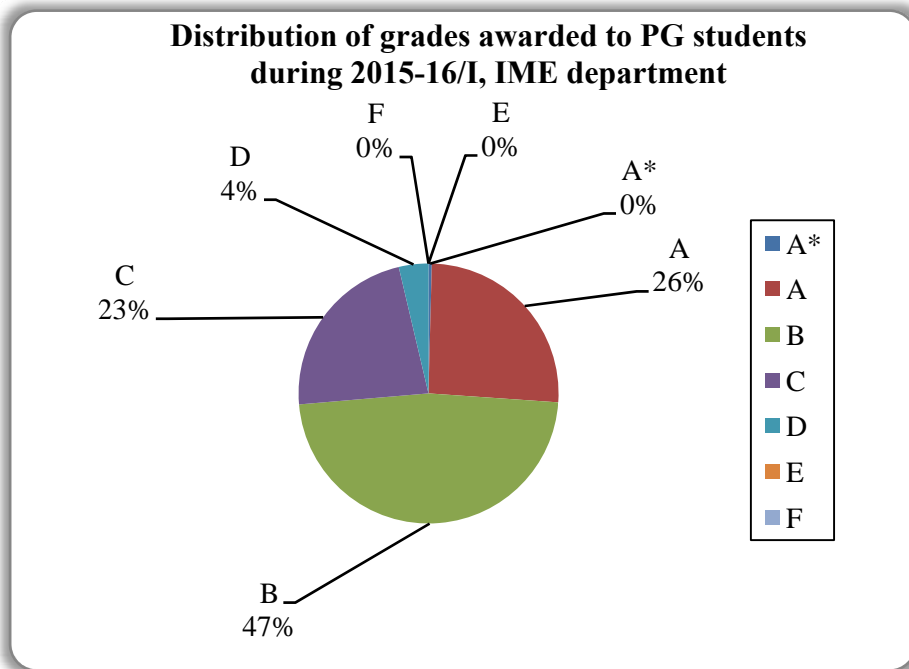


Figure 31

Data for course numbers: IME602A, IME603A, IME605A, IME636A, IME639A, IME641A, IME692A, MBA601A, MBA606A, MBA611A, MBA622A, MBA623A, MBA631A, MBA637A, MBA646A, MBA647A, MBA649A, MBA651A, MBA664A, MBA671A, MBA677A, MBA679A, MBA683A, MBA685A, MBA699A, VLM601, VLM602, VLM603, VLM604, VLM605, VLM606S

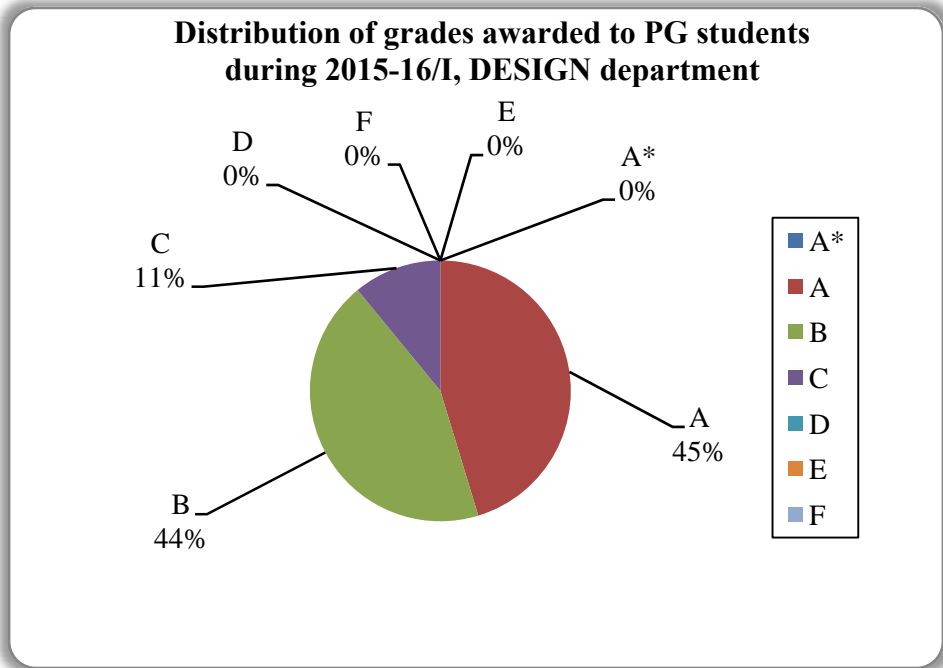


Figure 32

Data for course numbers: DES601A, DES604A, DES681A, DES698A

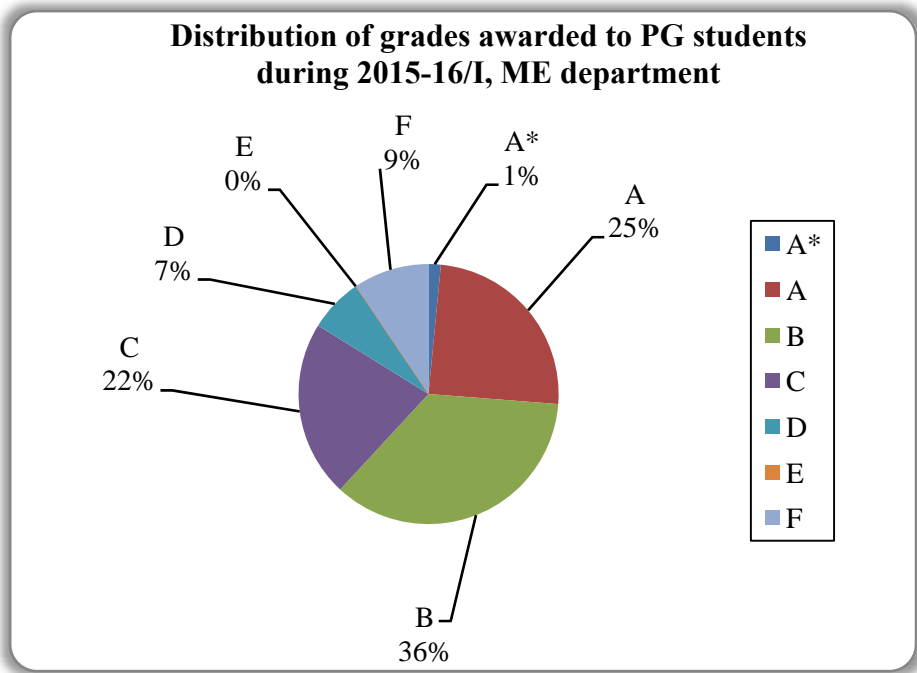


Figure 33

Data for course numbers: ME621A, ME623A, ME625A, ME630A, ME631A, ME641A, ME647A, ME661A, ME662A, ME676A, ME681A, ME685A, ME690A, ME701A, ME721A, ME723A, ME725A, ME756A, ME761A, ME763A, ME769A, ME850A, NT602A, NT611A, NT641A

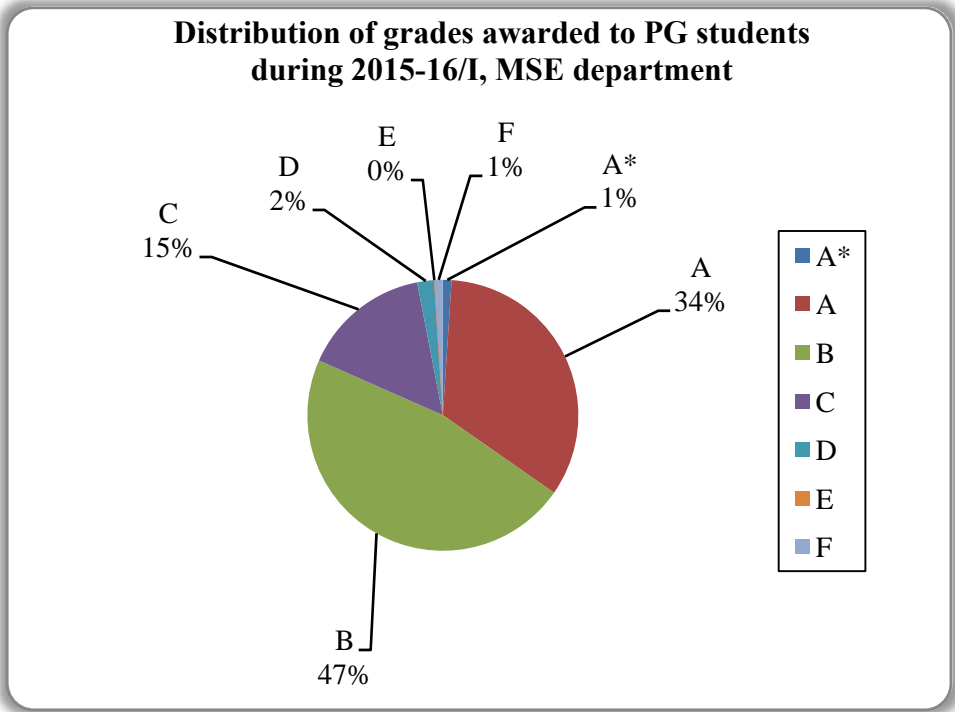


Figure 34
 Data for course numbers: MSE302A, MSE608A, MSE615A, MSE626A, MSE628A, MSE629A, MSE642A, MSE658A, MSE670A, MSE671A, MSE682A, MSE693A, MSE694A

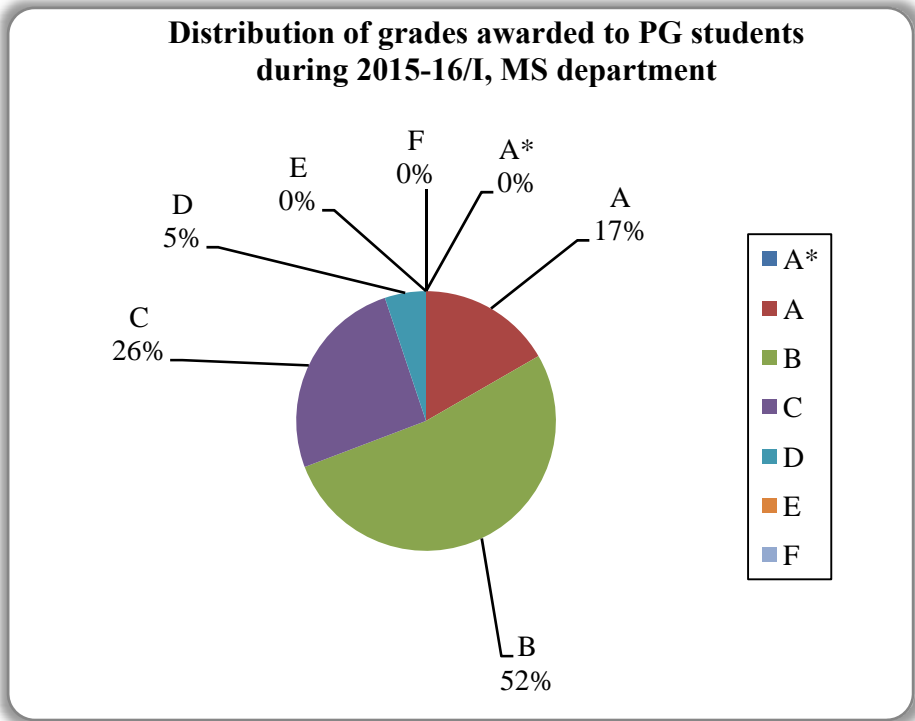


Figure 35
 Data for course numbers: MS601A, MS602A, MS605A

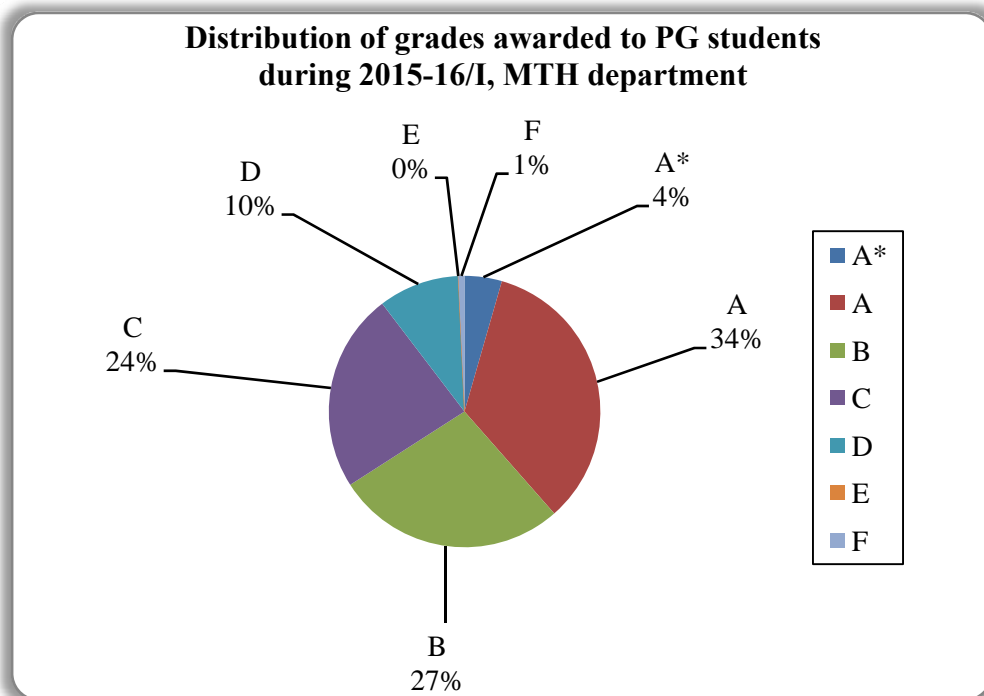


Figure 36

Data for course numbers: MTH401A, MTH598A, MTH610A, MTH611A, MTH612A, MTH620A, MTH621A, MTH648A, MTH649A, MTH658A, MTH691A, MTH701A, MTH753A, MTH754A, MTH755A, MTH781A

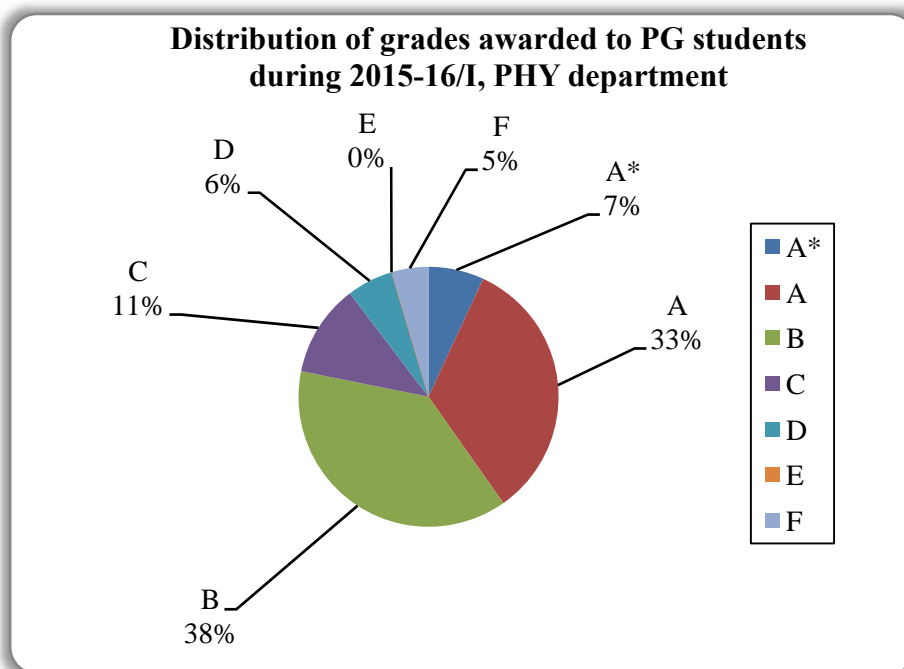


Figure 37

Data for course numbers: PHY407, PHY563A, PHY565A, PHY599, PHY601A, PHY603A, PHY605A, PHY613A, PHY615A, PHY647A, PHY681A, PHY690C, PHY690G, PHY690M, PHY690X/W

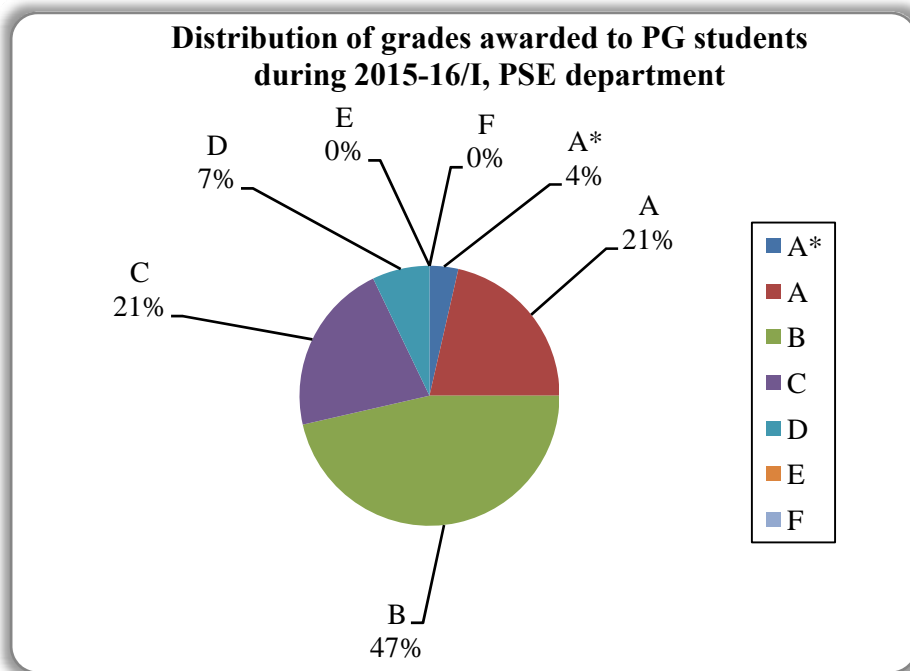


Figure 38

Data for course numbers: PSE601A, PSE602A, PSE603A

Annexure – 1

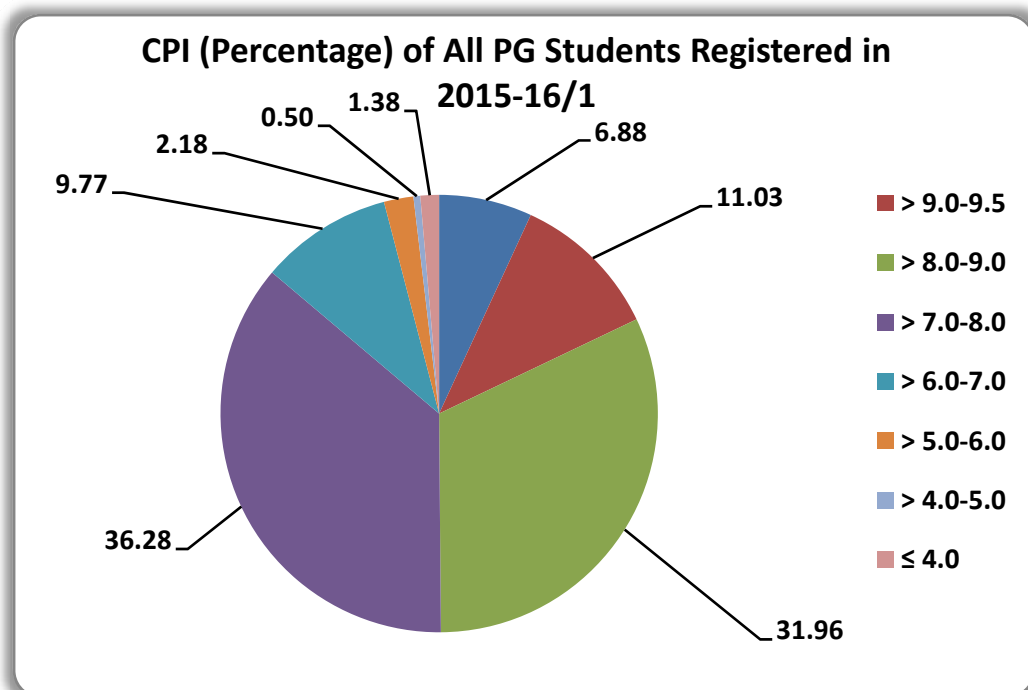
Average grade awarded to students across the Institute in 2015-16/I

Category of Students	% of Students with different grades							Average Grade (out of 10.0)
	A*	A	B	C	D	E	F	
All UG students (including core courses)	2	21	33	25	13	1	5	6.9
UG students, in Core courses only	2	19	31	26	15	1	5	6.8
All PG Students	1	28	43	21	4	0	3	7.8

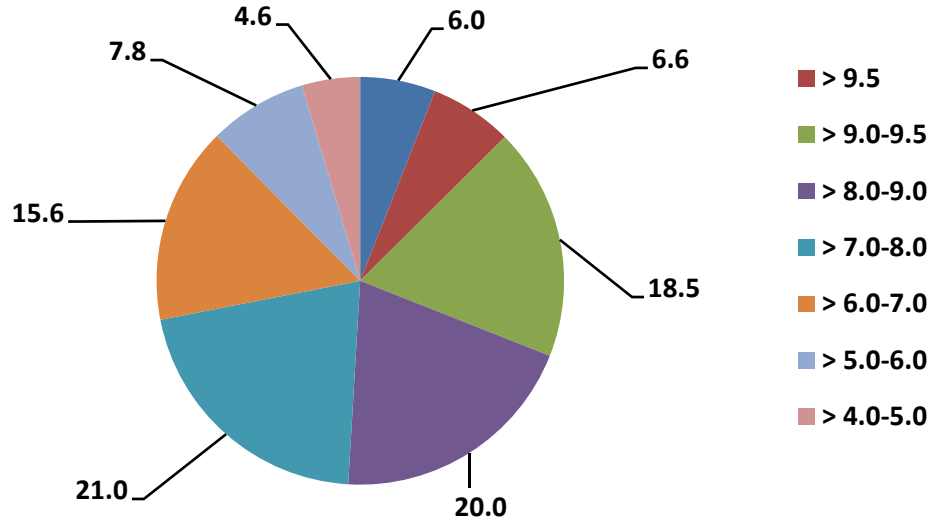
Annexure – 2

Cumulative Performance Index (CPI) Statistics of All Registered Students in 2015-16/I

Program	Total No.	> 9.5	> 9.0-9.5	> 8.0-9.0	> 7.0-8.0	> 6.0-7.0	> 5.0-6.0	> 4.0-5.0	≤ 4.0
PG	2384	164 (6.9%)	263 (11.0%)	762 (32.0%)	865 (36.3%)	233 (9.8%)	52 (2.2%)	12 (0.5%)	33 (1.4%)
UG	4065	243 (6.0%)	267 (6.6%)	750 (18.5%)	811 (20.0%)	853 (21.0%)	636 (15.6%)	317 (7.8%)	188 (4.6%)
CORE COURSES (UG)	987	83 (8.4%)	66 (6.7%)	139 (14.1%)	173 (17.5%)	199 (20.2%)	159 (16.1%)	79 (8.0%)	89 (9.0%)



CPI (Percentage) of All UG Students Registered in 2015-16/1



CPI (Percentage) of All CORE COURSES (UG) Students Registered in 2015-16/1

