

*STATISTICAL REPORT*

*OF*

*GRADES AWARDED*

*2014-15/I*



**JUNE-2015**

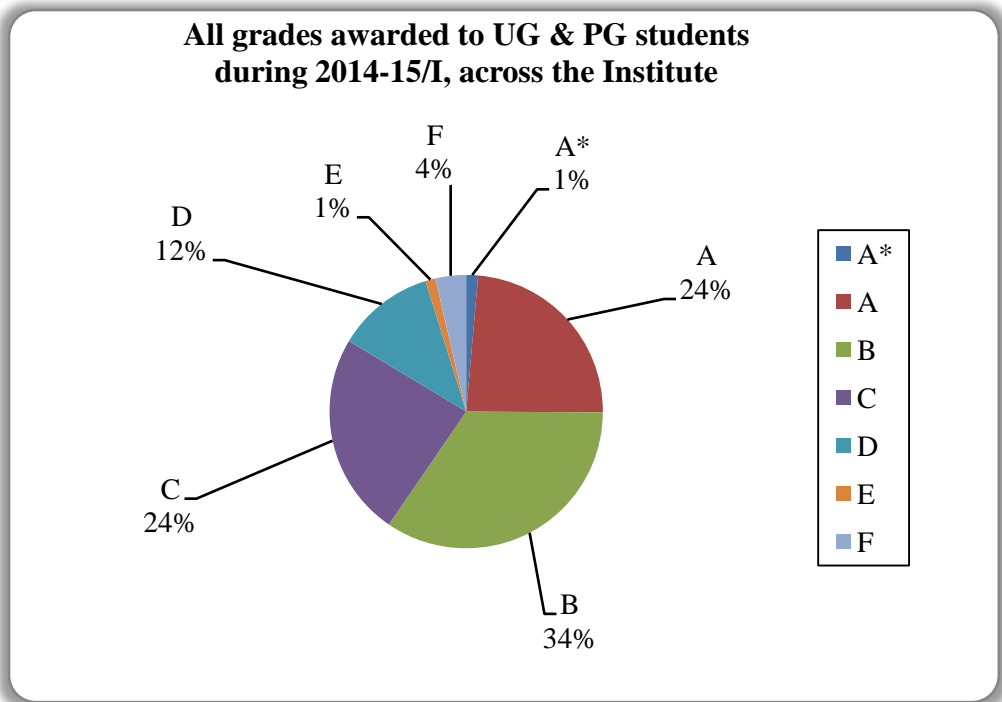
*Office of the Dean of Academic Affairs*

*Indian Institute of Technology Kanpur*

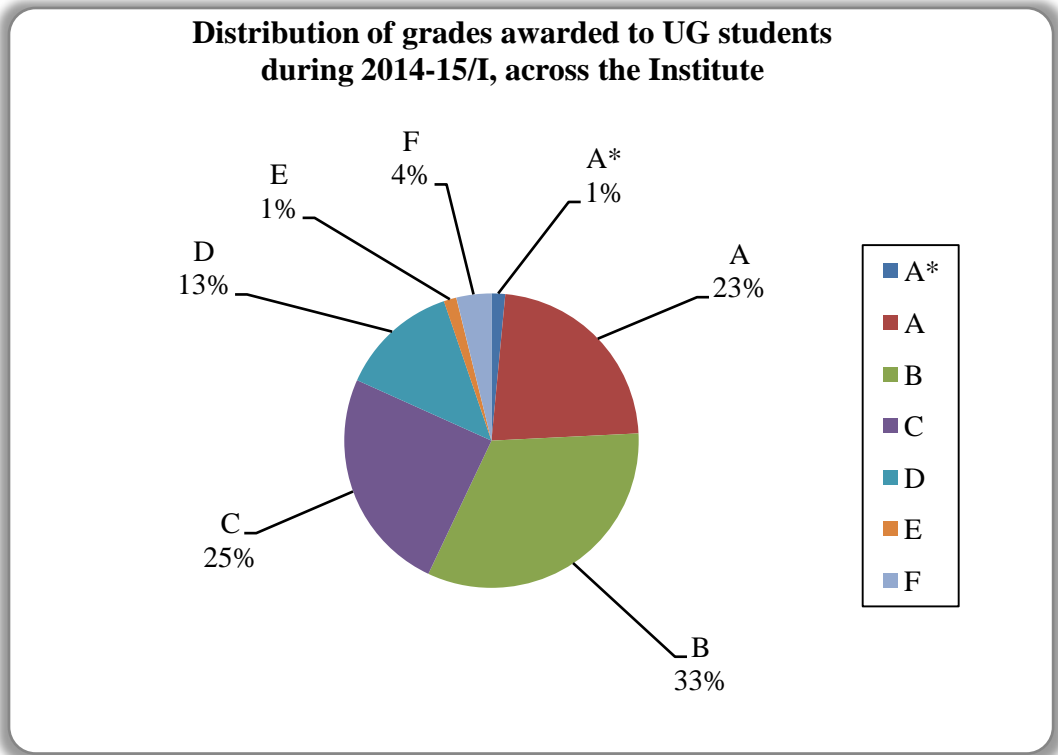
# LIST OF CONTENTS

---

S.No.	CONTENTS	Page No.
1	Figure 1: Distribution of all grades awarded to UG and PG students across the institute.	1
2	Figure 2: Distribution of all grades awarded to UG students	1
3	Figure 3: Distribution of all Core courses grades awarded to UG students	2
4	Figure 4: Distribution of all grades awarded to PG students	2
5	Figure 5: Distribution of all grades awarded to UG students	3
6	Figure 6: Distribution of all grades awarded to PG students	4
7	Figure 7: AE department distribution of grades awarded to UG students	5
8	Figure 8: BSBE department distribution of grades awarded to UG students	5
9	Figure 9: CE department distribution of grades awarded to UG students	6
10	Figure 10: CHE department distribution of grades awarded to UG students	6
11	Figure 11: CHM department distribution of grades awarded to UG students	7
12	Figure 12: CSE department distribution of grades awarded to UG students	7
13	Figure 13: EE department distribution of grades awarded to UG students	8
14	Figure 14: ES department distribution of grades awarded to UG students	8
15	Figure 15: HSS department distribution of grades awarded to UG students	9
16	Figure 16: IME department distribution of grades awarded to UG students	9
17	Figure 17: Design department distribution of grades awarded to UG students	10
18	Figure 18: ME department distribution of grades awarded to UG students	10
19	Figure 19: MSE department distribution of grades awarded to UG students	11
20	Figure 20: MTH department distribution of grades awarded to UG students	11
21	Figure 21: PHY department distribution of grades awarded to UG students	12
22	Figure 22: PSE department distribution of grades awarded to UG students	12
23	Figure 23: AE department distribution of grades awarded to PG students	13
24	Figure 24: BSBE department distribution of grades awarded to PG students	13
25	Figure 25: CE department distribution of grades awarded to PG students	14
26	Figure 26: CHE department distribution of grades awarded to PG students	14
27	Figure 27: CHM department distribution of grades awarded to PG students	15
28	Figure 28: CSE department distribution of grades awarded to PG students	15
29	Figure 29: EE department distribution of grades awarded to PG students	16
30	Figure 30: ES department distribution of grades awarded to PG students	16
31	Figure 31: HSS department distribution of grades awarded to PG students	17
32	Figure 32: IME department distribution of grades awarded to PG students	17
33	Figure 33: Design department distribution of grades awarded to PG students	18
34	Figure 34: ME department distribution of grades awarded to PG students	18
35	Figure 35: MSE department distribution of grades awarded to PG students	19
36	Figure 36: MSP department distribution of grades awarded to PG students	19
37	Figure 37: MTH department distribution of grades awarded to PG students	20
38	Figure 38: PHY department distribution of grades awarded to PG students	20
39	Figure 39: PSE department distribution of grades awarded to PG students	21

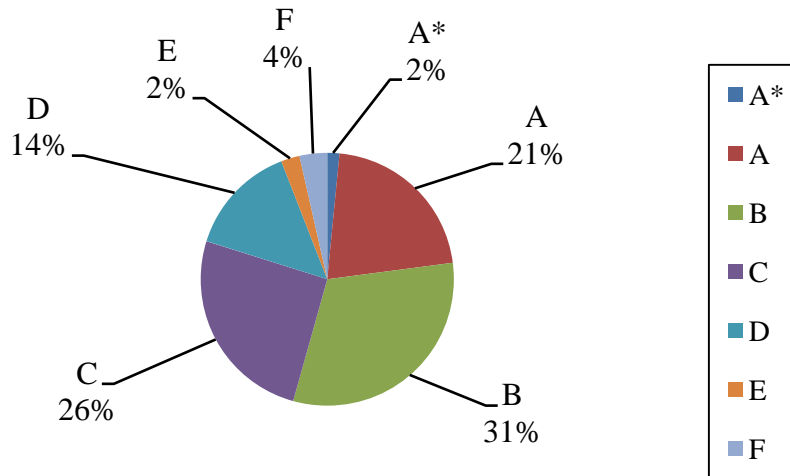


**Figure 1**  
Distribution of all grades awarded to UG and PG students across the institute



**Figure 2**  
(UG students) include all students who have a 5-digit roll number  
(All B.Tech, Msc-2yr, BT part of BT-MT)

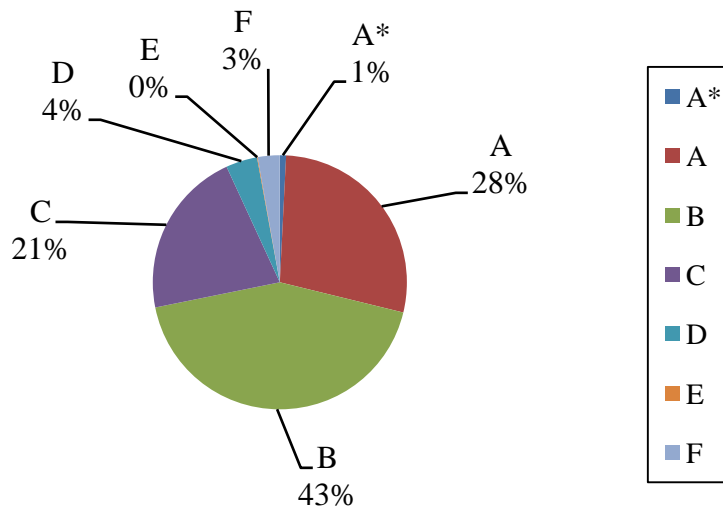
**Distribution of grades awarded to core courses during 2014-15/I, across the Institute**



**Figure 3:**

Data for Core course numbers:ART105A, ART106A, CHM101A, CHM102A, ECO101A, ENG112C, ENG123A, ESC101A, ESC201A, ESO201A/ESO202, ESO202A, ESO203A/ESO210, ESO204A/ESO212, ESO205A/ESO214, ESO206A, ESO207A/ESO211, ESO208A/ESO218, ESO209A/ESO206, LIF101A, MSO202A/MSO202, MSO203B/MSO203, MTH101A/N, MTH102A, PHI141A, PHI142A, PHY101A, PHY102A/N, PHY103A/N, PSY152A, SOC171A/SOC171, SOC173A, TA101A/N,201A/N, TA202A

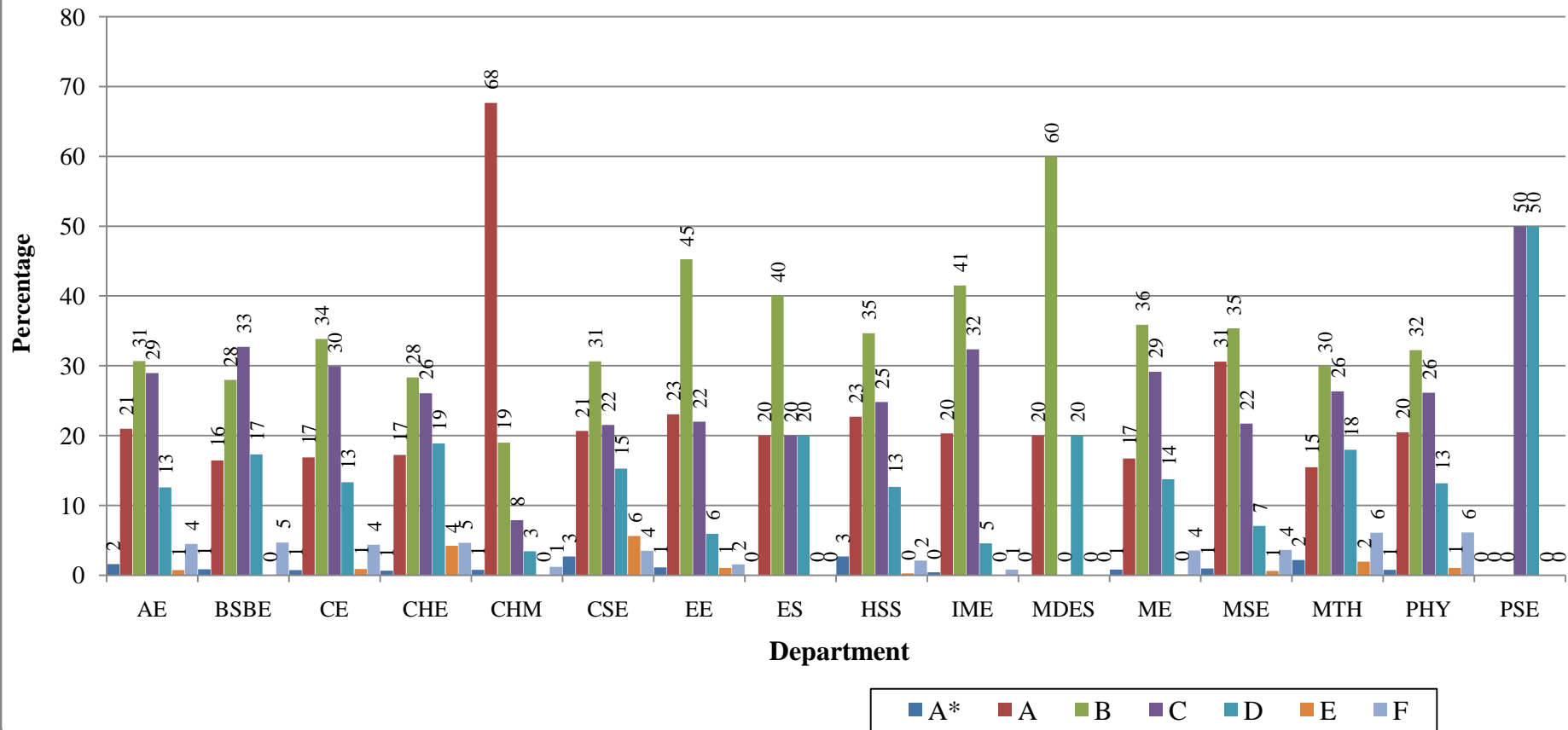
**Distribution of grades awarded to PG students during 2014-15/I, across the Institute**



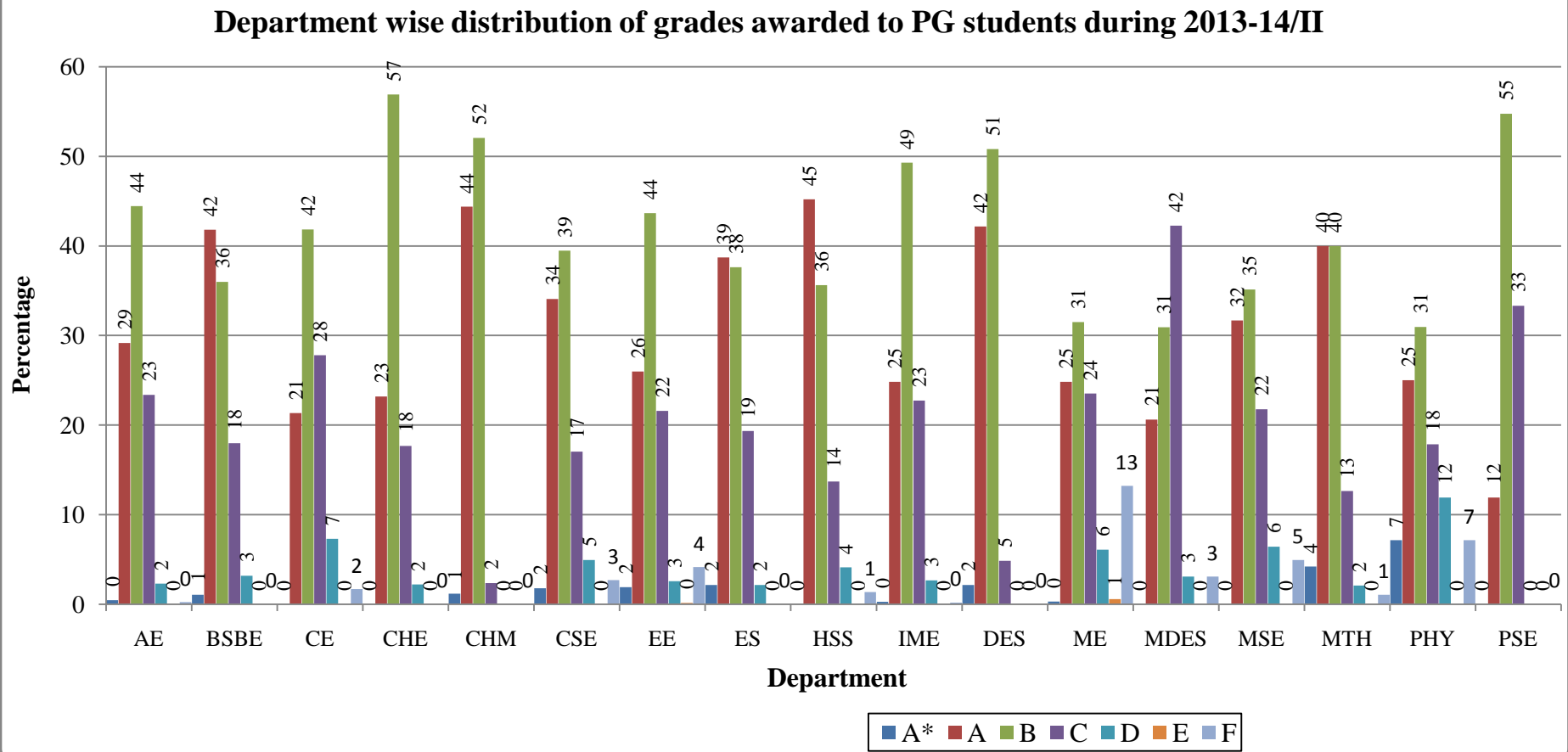
**Figure 4:**

PG students include all students (All M.Tech, MT Part of BT-MT, PhD, MBA, M.Des, VLFM)

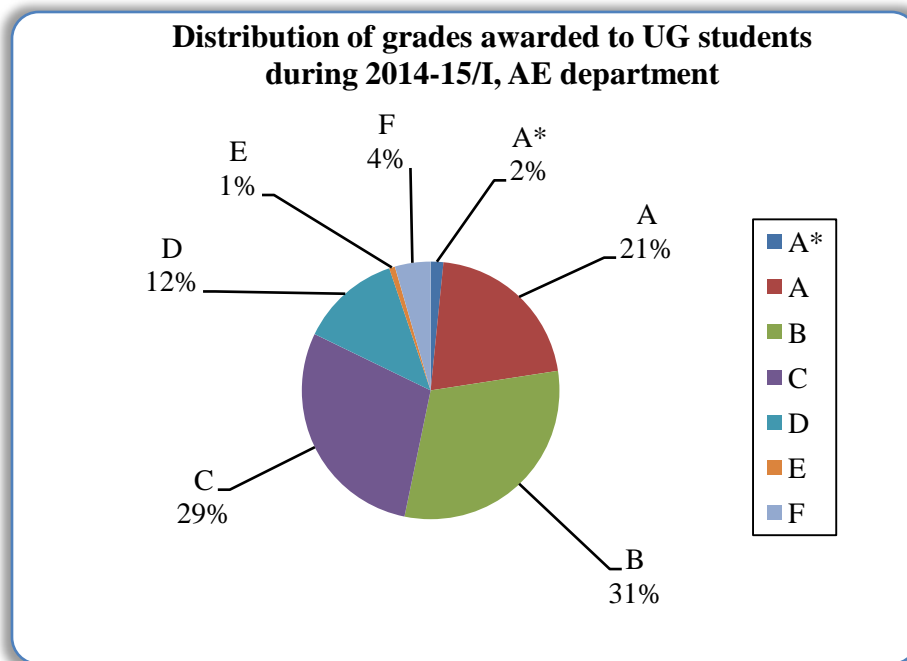
**Department wise distribution of grades awarded to UG students during 2014-15/I**



**Figure 5** Distribution of all grades awarded to UG students

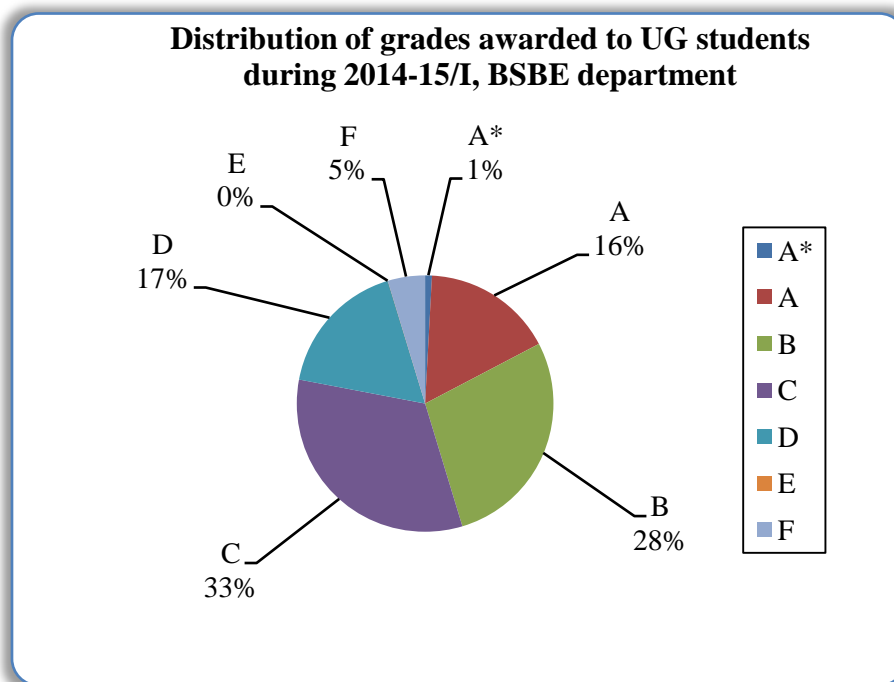


**Figure 6:** Distribution of all grades awarded to PG students



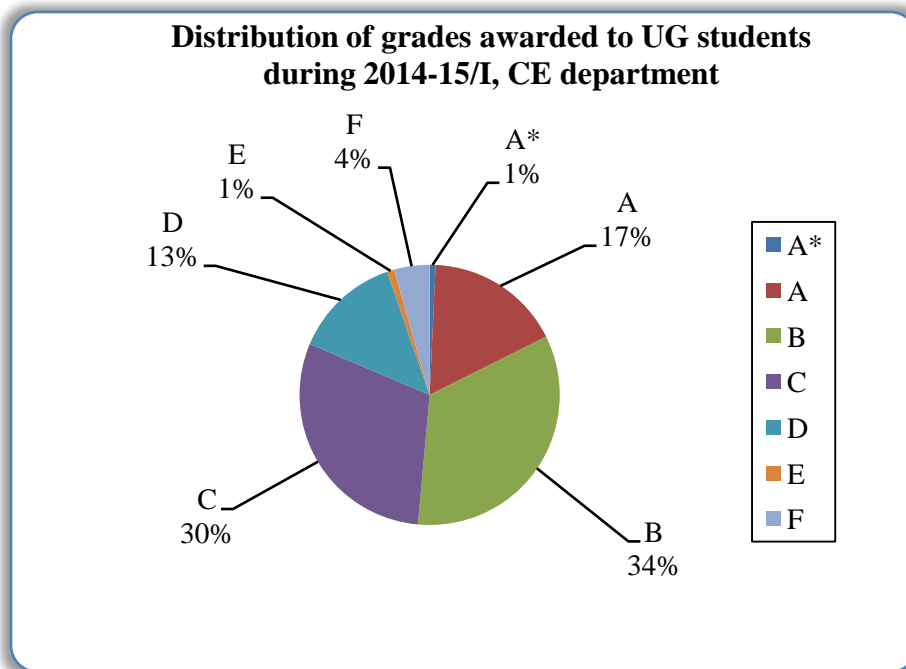
**Figure 7**

Data for course numbers: AE201A, AE311A/AE312, AE321A/AE321, AE331A/AE232, AE441A, AE451A, AE461A/AE461, AE471A/AE471, AE472, AE603A/AE603, AE605A, AE610A, AE618A/AE618, AE640A/AE640, AE647A, AE652A, AE662A, AE686A/AE686, AE689A, ESO202A



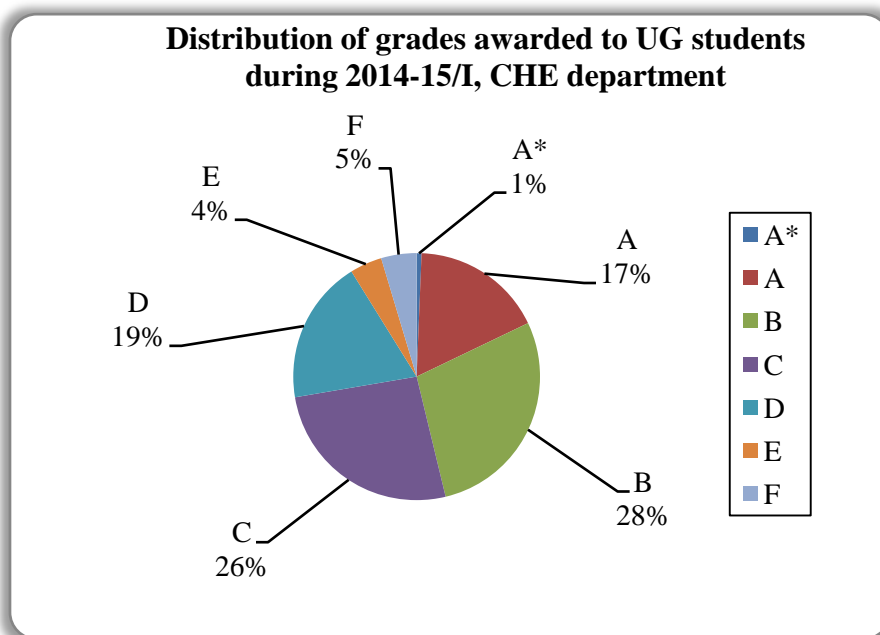
**Figure 8**

Data for course numbers: BSE211A, BSE311A/BSE212, BSE312A, BSE398A, BSE411A/BSE352, BSE412A, BSE491, BSE492A/BSE492, BSE498A/BSE498, BSE611A/BSE611, BSE621A/BSE621, BSE629A/BSE629, BSE631, BSE651A/BSE651, BSE655A/BSE655, BSE656A/BSE656, ESO206A, LIF101A



**Figure 9**

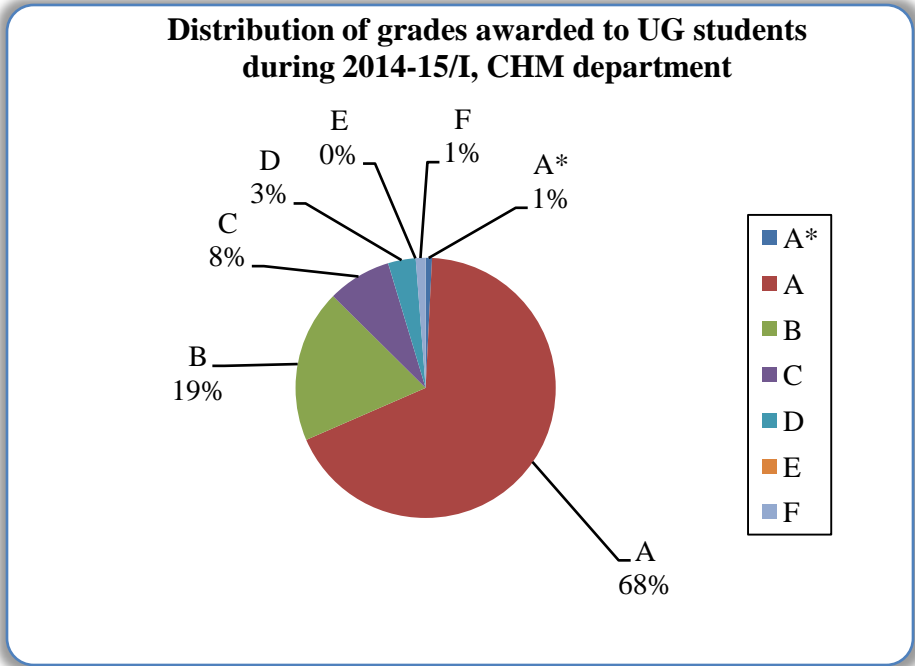
Data for course numbers: CE211A, CE321A, CE331A, CE351A, CE371A/CE321, CE442A/CE451, CE451A, CE471A, CE481A, CE491A, CE492A/CE482, CE601, CE616A/CE616, CE620A, CE621A, CE623A, CE631A, CE642A, CE651A, CE671A, CE677A, CE678A/CE678, CE689A/N, CE731A, EEM602A/EEM602, EEM603A, EEM606A, ESO208A/ESO218



**Figure 10**

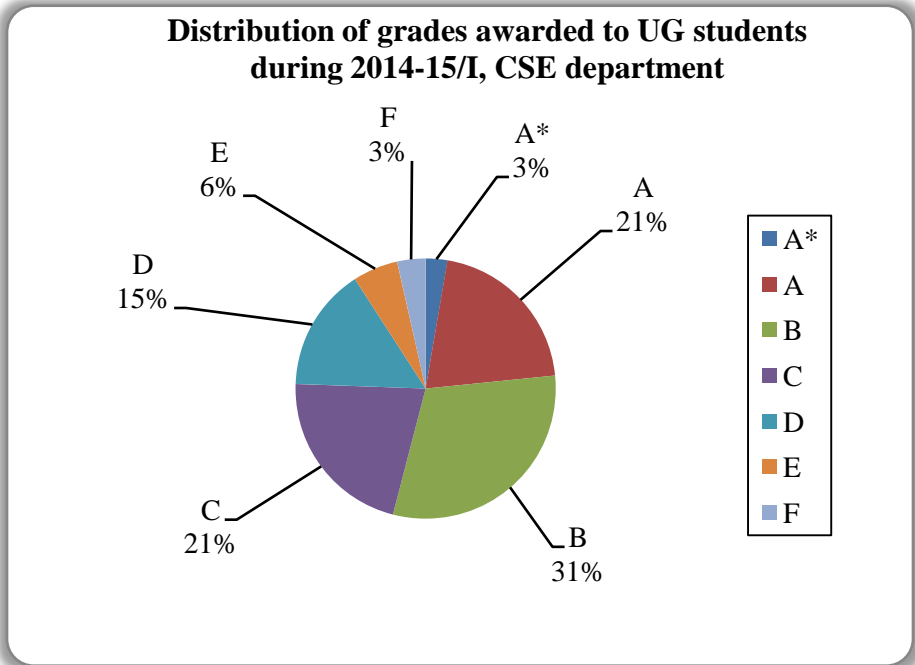
Data for course numbers: CHE251A, CHE312A/CHE312, CHE313A/CHE313, CHE352A, CHE453A/CHE453, CHE492A/CHE492, CHE494A/CHE494, CHE497A, CHE611A/CHE611, CHE614A/CHE614, CHE618A/CHE618, CHE631A/CHE631, CHE633A/CHE633, CHE641A/CHE641, CHE661A/CHE661, CHE674A/CHE674, CHE678A/CHE678, CHE679A/CHE679, ESO204A/ESO212





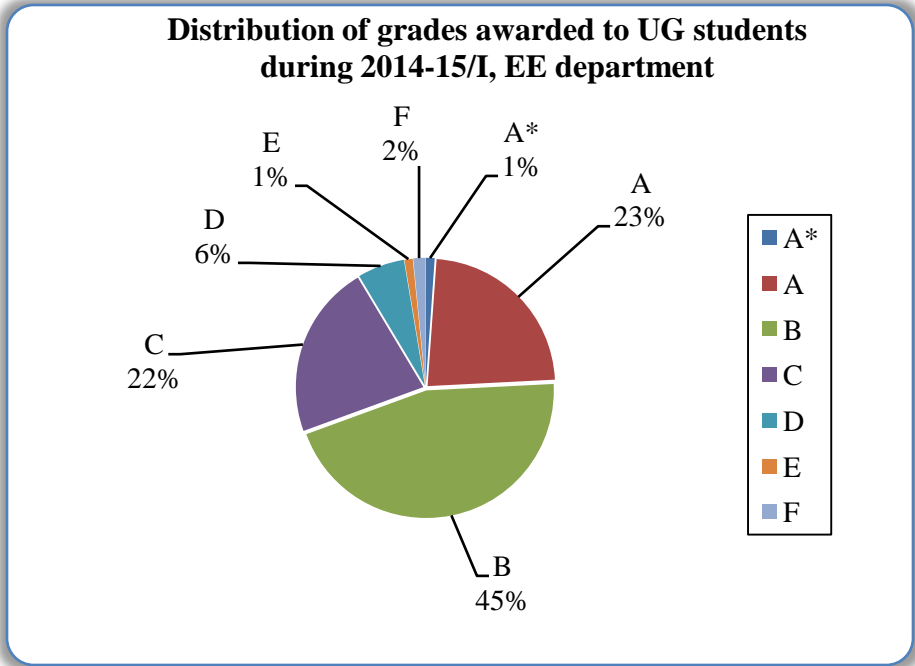
**Figure 11**

Data for course numbers: CHM101A, CHM102A, CHM203A/SE332, CHM303A/CHM401A, CHM305A, CHM345A/CHM441A, CHM391A, CHM404, CHM421A/CHM421/CHM321A, CHM423A/CHM423, CHM441A, CHM491A, CHM503, CHM600/CHM521A, CHM602A/CHM602, CHM611A/CHM611, CHM616, CHM621A/CHM621, CHM646A/CHM646, CHM649, CHM650A/CHM650, CHM651A/CHM651, CHM664A/CHM664, CHM683A/CHM683, CHM684A/CHM684, CHM691, CHM698A/CHM698, CHM700.



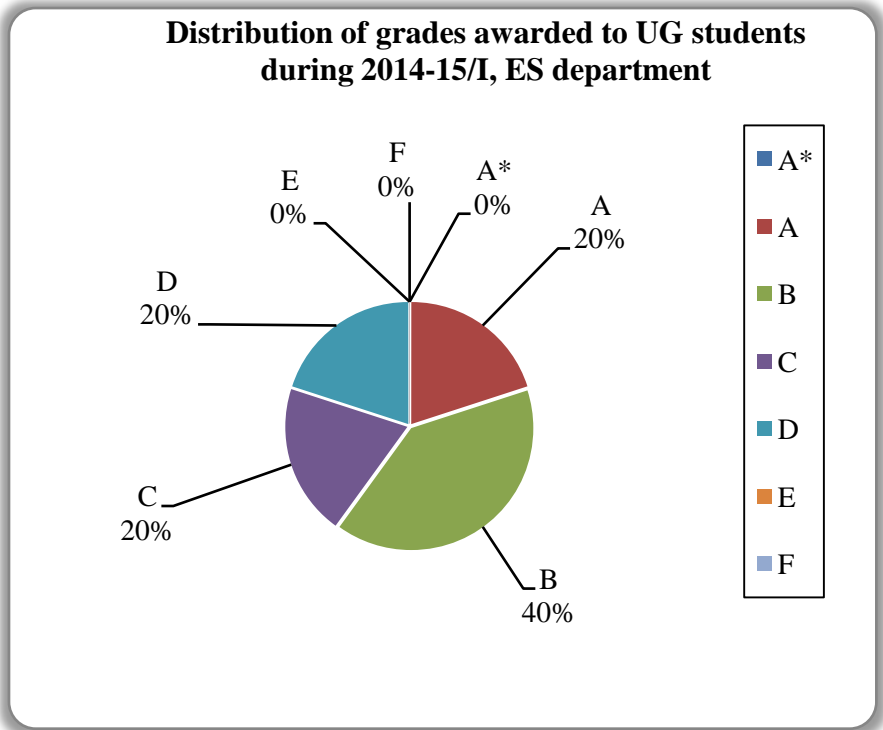
**Figure 12**

Data for course numbers: CS201A/CS201, CS210A/CS210, CS252A, CS330A/CS330, CS340A/CS340, CS345A/CS345, CS350A/CS350, CS360A/CS360, CS395A, CS425A/CS425, CS433A/CS433, CS498A/CS498, CS632A, CS641A/CS641, CS654A/CS654, CS663A/CS663A, CS681A/CE681, CS682A/CE682, CS698R/J, ESC101A, ESO207A, ESO207A/ESO211, SE367A,



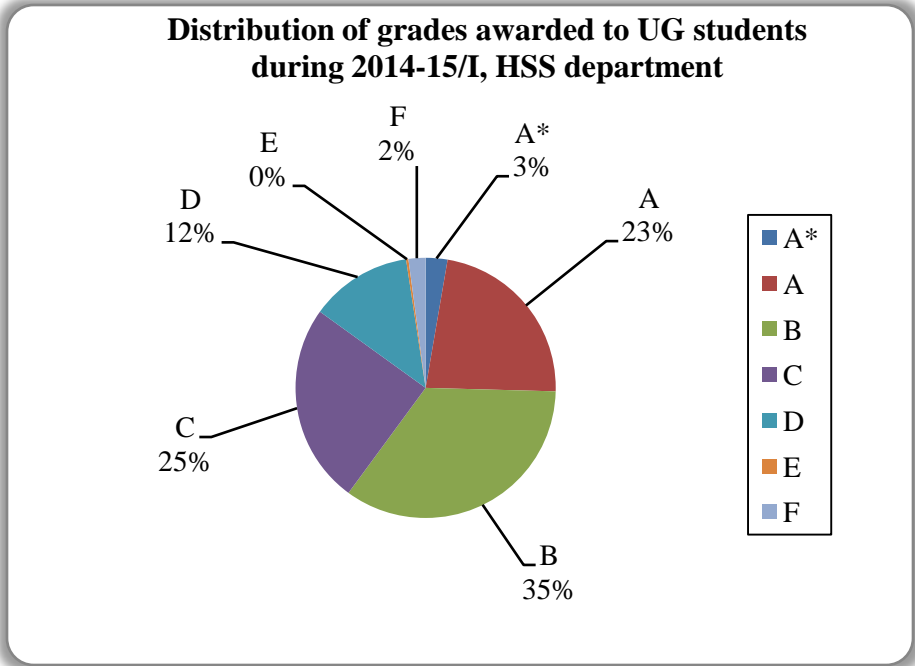
**Figure 13**

Data for course numbers: EE200A, EE320A, EE330A, EE370A, EE380A/EE380, EE442A, EE491A/CE491, EE492, EE601A, EE604A/EE604, EE607A/EE607, EE610A, EE612A/EE612, EE614A, EE616A, EE618A, EE621A, EE624A/EE624, EE632A/EE632, EE634A, EE646, EE650A, EE653A, EE654A, EE664A/EE664, EE670A, EE673A, EE674A, EE698A, EE698F, EE705A, ESC201A, ESO203A/ESO210



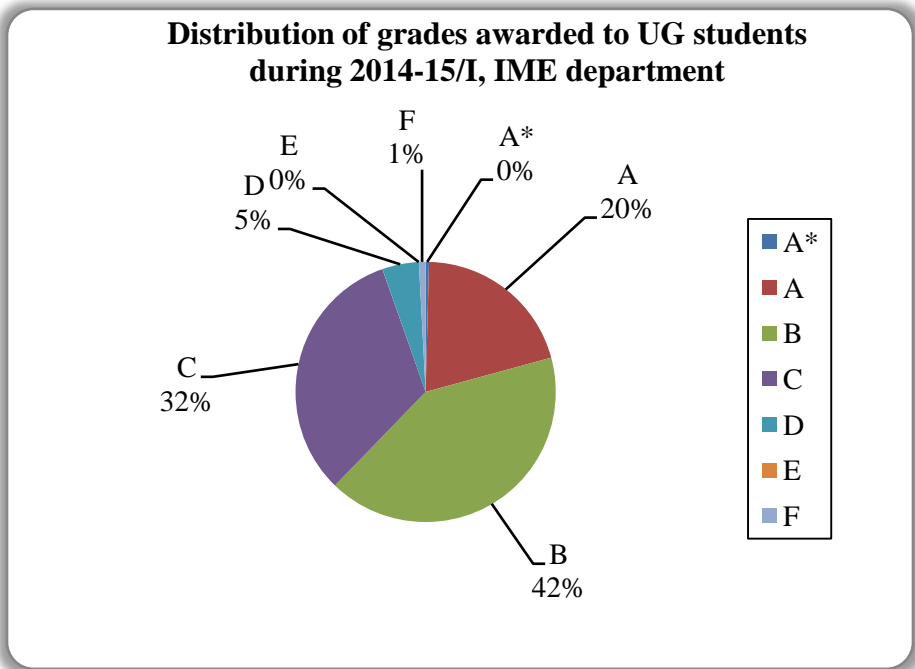
**Figure 14**

Data for course numbers: ES642, ES646A



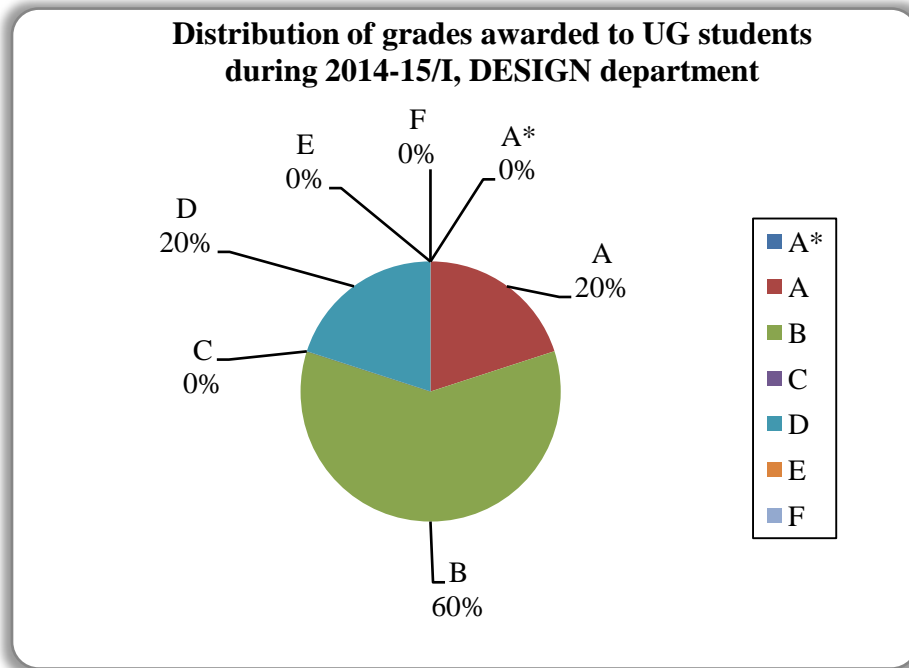
**Figure 15**

Data for course numbers: ART105A, ART106A, ART401A/ART401, ART402A/ART402, ECO101A, ECO201A/ECO201, ECO261A/ECO261, ECO301A/ECO303, ECO321A/ECO402, ECO341A, ECO398A, ECO408A/ECO408, ECO411A/ECO321, ECO412A, ECO498A, ECO501A/ECO501, ECO525A, ECO535, ECO598, ECO599, ECO732A/ECO732, ECO734A, ECO738, ENG112C, ENG123A, ENG448A/ENG448, ENG735A, PHI141A, PHI142A, PHI446A/PHI446, PHI448A/PHI448, PHI751A/PHI751, PSY152A, PSY451A/PSY451, PSY458A/PSY458, SOC171A/SOC171, SOC173A, SOC473A/SOC473



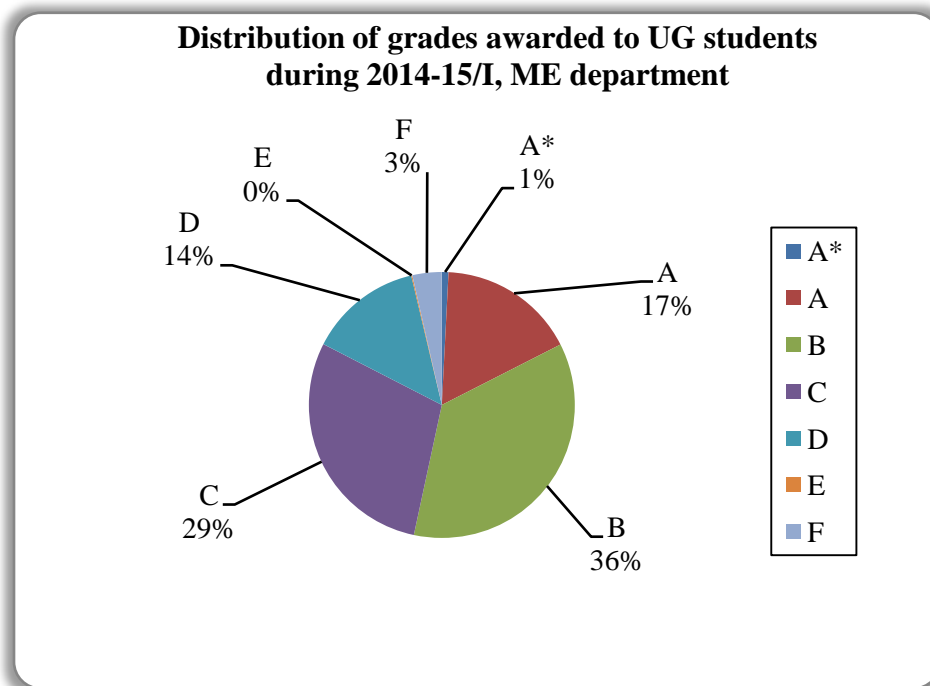
**Figure 16**

Data for course numbers: MBA611A/MBA611, MBA622A/MBA622, MBA631A/MBA631, MBA639A/MBA639, MBA641A/MBA641, MBA646A/MBA646, MBA651A/MBA651, MBA654A/MBA654, MBA664A/MBA664, MBA676A/MBA676, MBA679A/MBA679, MBA683A



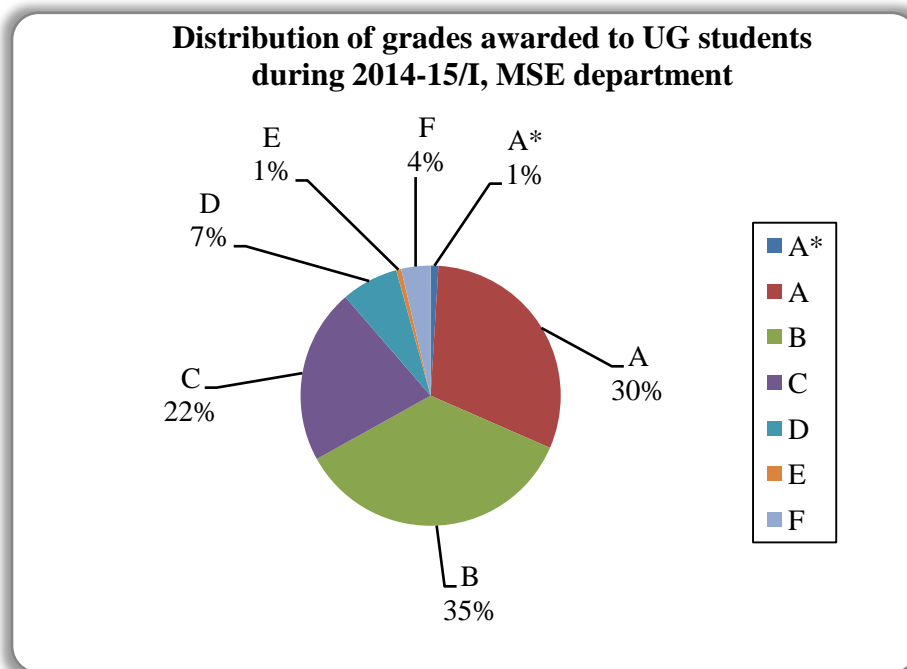
**Figure 17**

Data for course numbers: DES602, DES625A



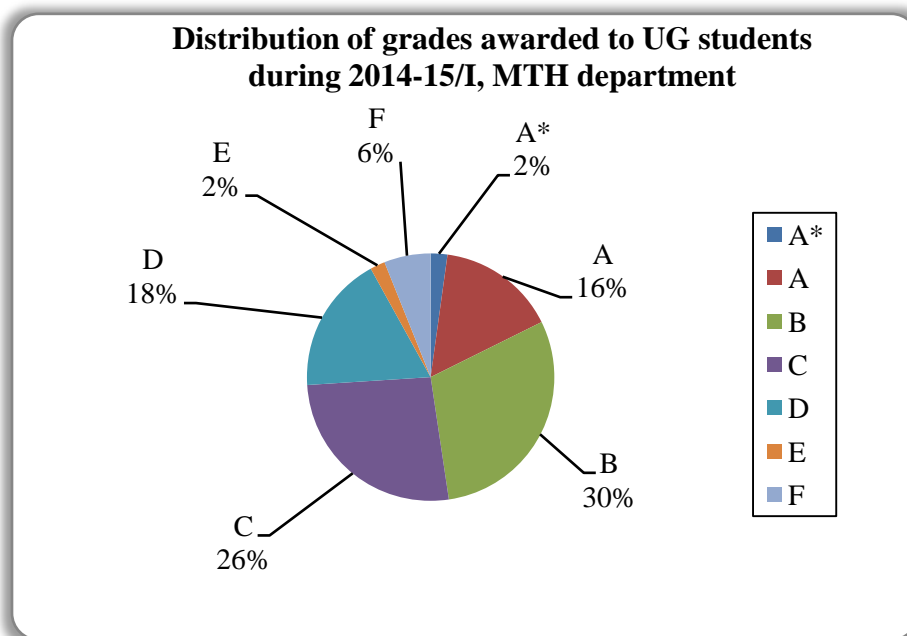
**Figure 18**

Data for course numbers: ESO201A/ESO202, ESO209A/ESO206, ME251A, ME301A/ME301, ME321A/ME321, ME352A/ME352, ME359A, ME361A, ME401A/ME401, ME451A, ME498A, ME623A, ME630A, ME631A, ME641A, ME661, ME662A/ME662, ME685A/ME685, ME698N, ME701A, ME723A/ME723, ME724A/ME724, ME761A, ME763A/ME763, ME771A, NT611A/NT611, NT602A/NT602, NT621A/NT621, TA101A/N, TA202A



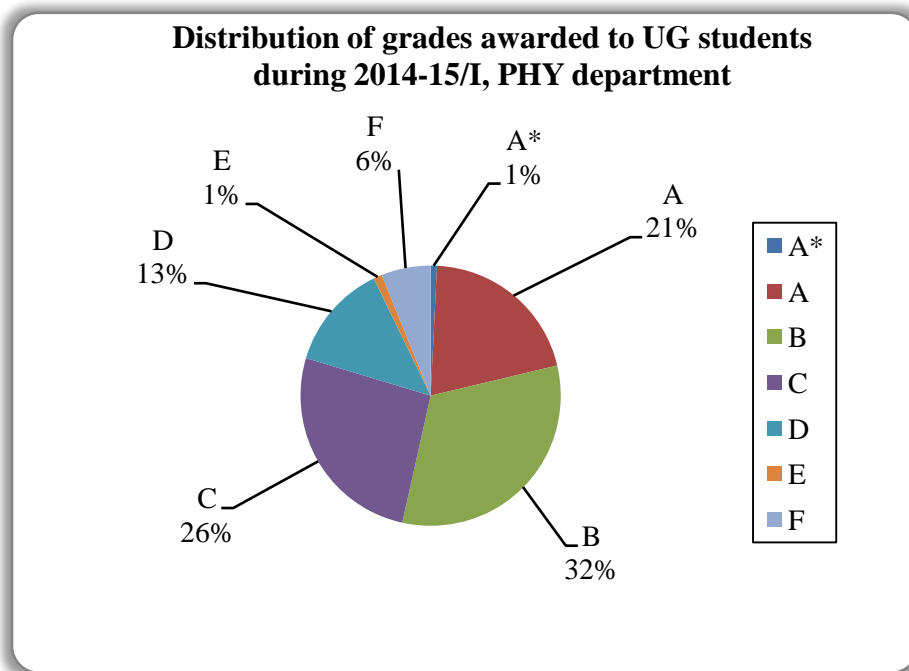
**Figure 19**

Data for course numbers: ESO205A/ESO214, MSE200, MSE201A, MSE301A/MSE340, MSE302A/MSE310, MSE303A/MSE410, MSE311A, MSE313A, MSE349A, MSE497A, MSE498, MSE613A/MSE613, MSE615A, MSE626A, MSE628A, MSE642A/MSE642, MSE648A, MSE658A/MSE658, MSE659A/MSE659, MSE664A, MSE670A/MSE670, MSE671A/MSE671, MSE682A/MSE682, MSE693A/MSE693, MSE694A, TA201A/N



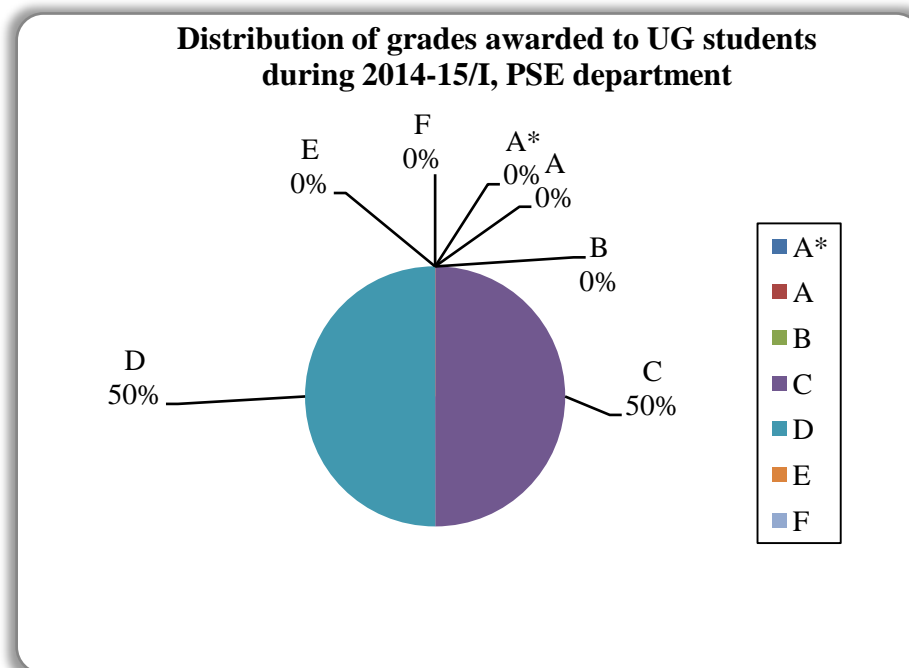
**Figure 20**

Data for course numbers: MSO202A/MSO202, MSO203B/MSO203, MTH101A/N, MTH102A, MTH201A/MTH201, MTH204A/MTH204, MTH301A/MTH301, MTH305A/MTH305, MTH393A, MTH401A/MTH401, MTH403A/MTH403, MTH405, MTH409A, MTH412A/MTH412, MTH415A/MTH415, MTH417A/MTH417, MTH423A/MTH423, MTH425A/MTH425, MTH428A/MTH428, MTH515, MTH517A/MTH517, MTH523A/MTH423, MTH598, MTH611A/MTH611, MTH612A/MTH612, MTH620A/MTH620, MTH633A/MTH633, MTH635, MTH648A/MTH648, MTH649A/MTH649, MTH658A/MTH659, MTH686A/MTH686, MTH691, MTH692A/MTH692, MTH698, MTH719, MTH754A, MTH755, MTH784



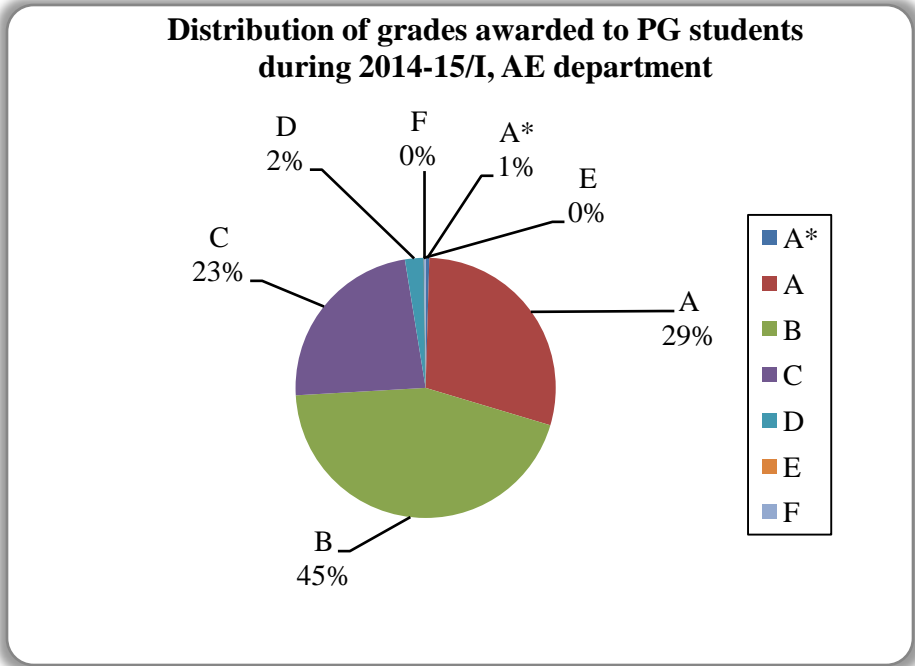
**Figure 21**

Data for course numbers: PHY101A, PHY102A/N, PHY103A/N, PHY218, PHY224A/PHY224, PHY311A/PHY311/SE305, PHY315A, PHY401A/PHY401/SE314, PHY407A/PHY407/SE315, PHY421A/PHY421, PHY431A/PHY432, PHY441A/PHY441, PHY461A/PHY461, PHY462, PHY501, PHY502, PHY543A/PHY543, PHY552A/PHY552, PHY555A, PHY556A, PHY563, PHY565, PHY590, PHY599, PHY631A/PHY631, PHY632, PHY679, PHY681, PHY681A, PHY690K, PHY690M, PHY690S, PHY781



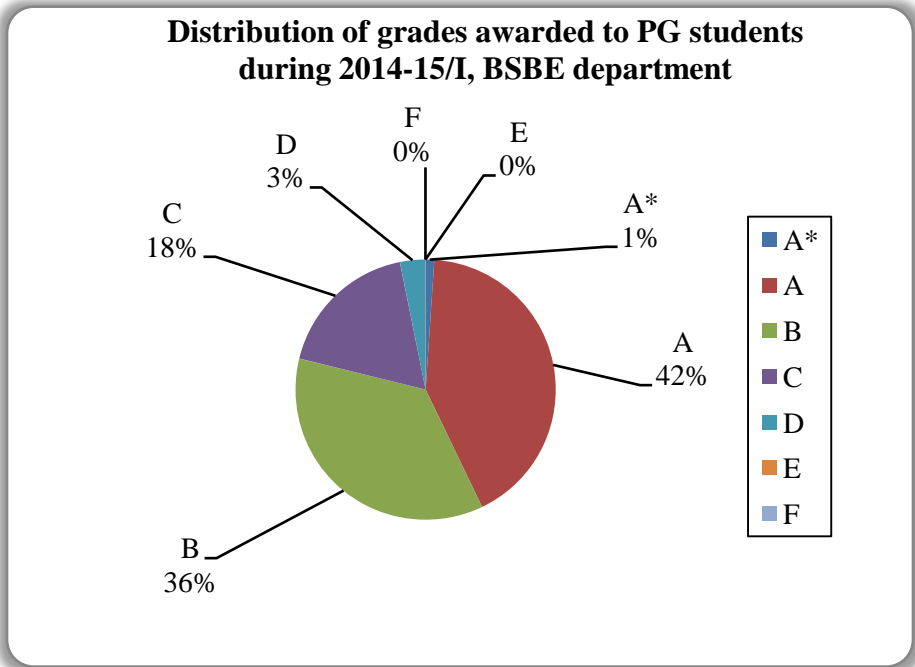
**Figure 22**

Data for course numbers: PSE601, PSE603



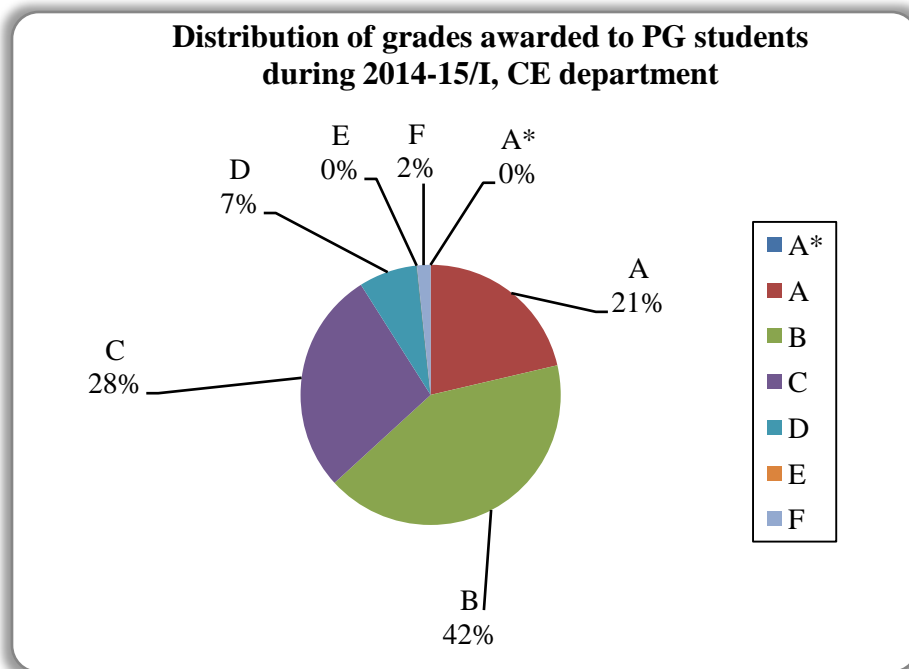
**Figure 23**

Data for course numbers: AE601A/AE601, AE602A/AE602, AE603A/AE603, AE605, AE610A/AE610, AE611A/AE611, AE618A/AE618, AE640A/AE640, AE647A/AE647, AE652A/AE652, AE662A, AE670A/AE670, AE686A, AE688A/AE688, AE689A/AE689



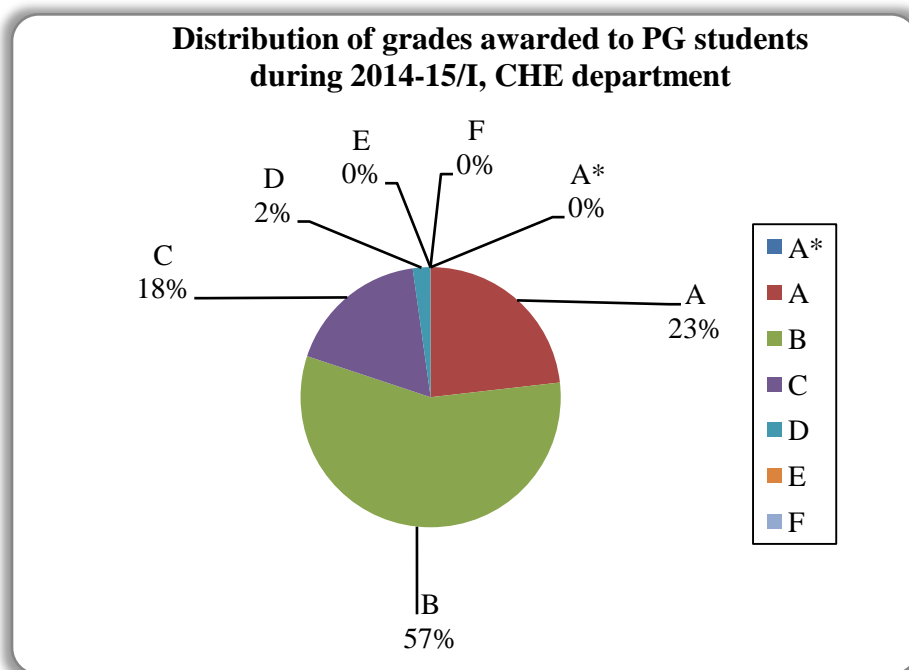
**Figure 24**

Data for course numbers BSE611A/BSE611, BSE613A, BSE631A/BSE631, BSE641, BSE651A/BSE651, BSE655A/BSE655, BSE656A/BSE656, BSE671, BSE682



**Figure 25**

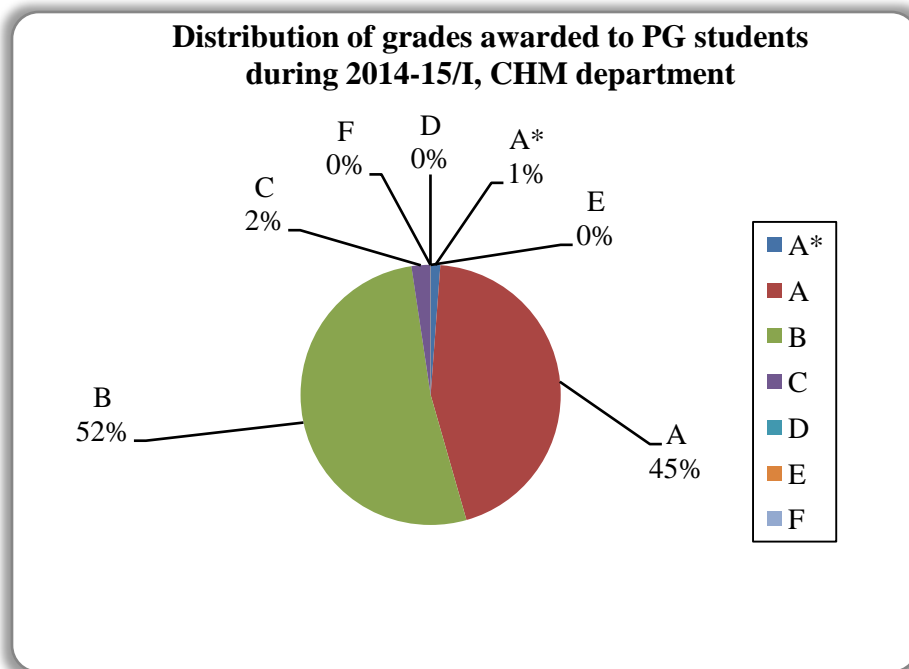
Data for course numbers: CE601A/CE601, CE602A, CE610A, CE611A, CE616A, CE620A, CE621A/N, CE623A, CE631A/N, CE637A/CE637, CE638A, CE642, CE642A/CE642, CE651, CE671A/N, CE677A/N, CE678A/CE678, CE683A, CE689A/N, CE731A/CE731, EEM602A/EEM602, EEM603A/EEM603, EEM606A/EEM606



**Figure 26**

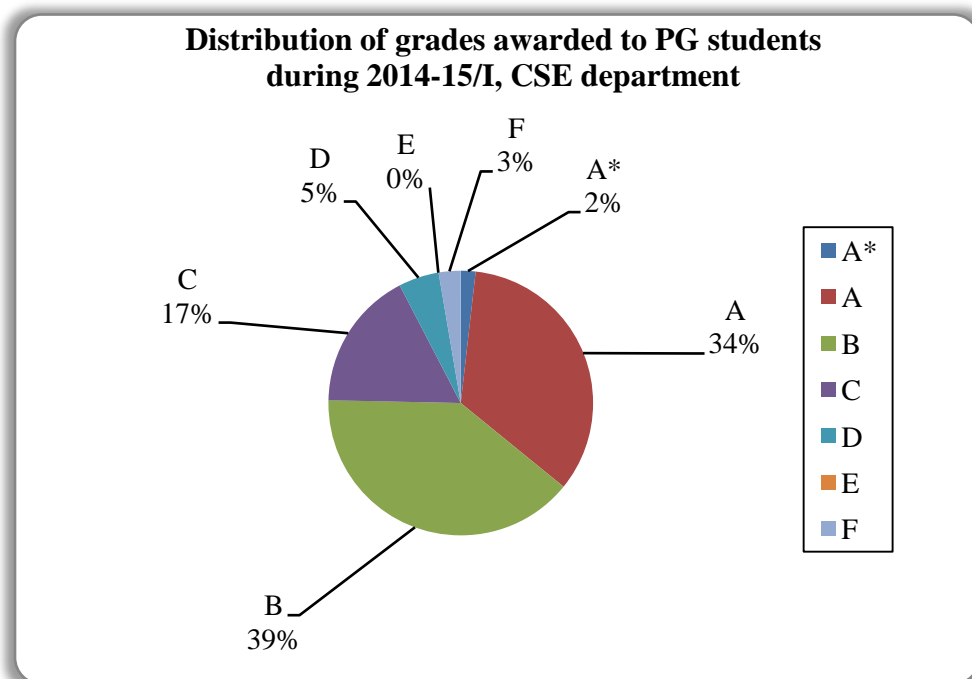
Data for course numbers: CHE601A, CHE611A/CHE611, CHE614A/CHE614, CHE618A/CHE618, CHE631A/CHE631, CHE633A/CHE633, CHE641A/CHE641, CHE661A/CHE661, CHE674A/CHE674, CHE678A/CHE678, CHE679A/CHE679





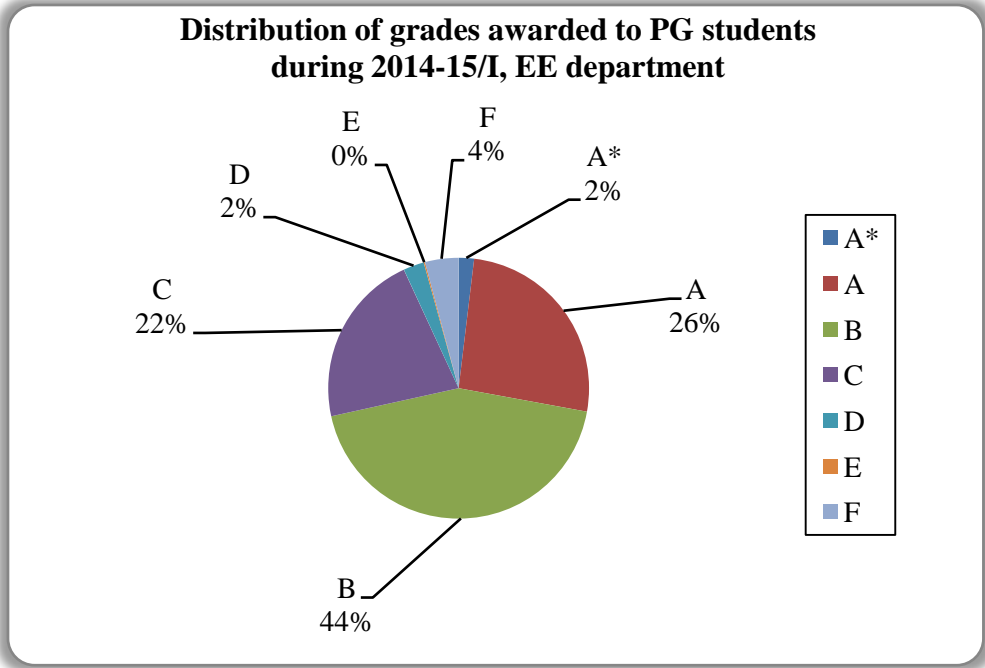
**Figure 27**

Data is for course numbers: CHM600A/CHM600, CHM602A, CHM609A/CHM609, CHM611A/CHM611, CHM616A/CHM616, CHM621A/CHM621, CHM629A/CHM629, CHM646A/CHM646, CHM649A/CHM649, CHM650A/CHM650, CHM651A/CHM651, CHM664A, CHM683A/CHM683, CHM684A/CHM684, CHM691A/CHM691, CHM698A/CHM698



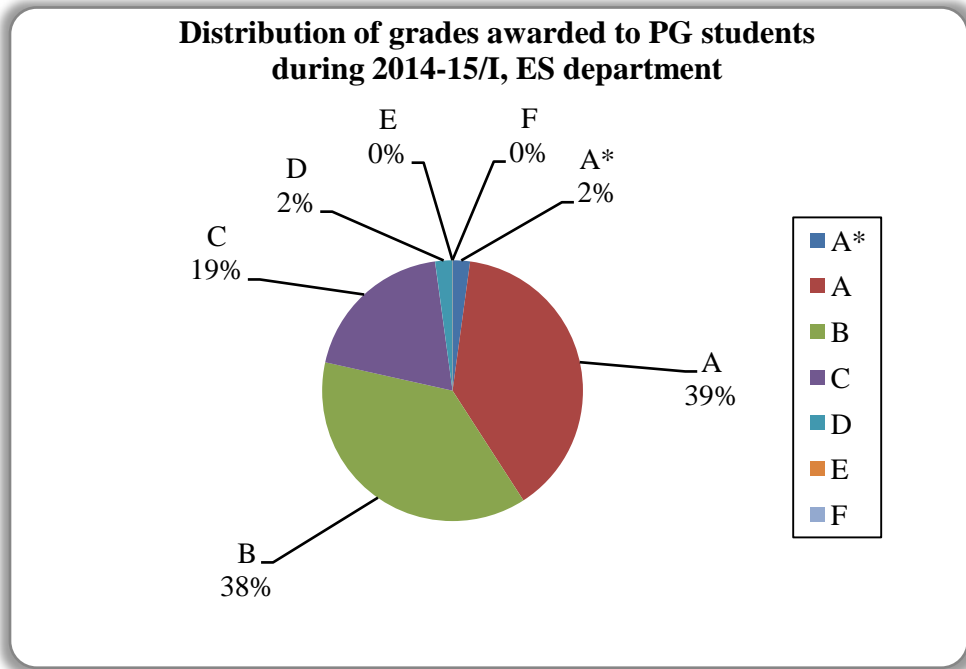
**Figure 28**

Data for course numbers: CS601A/CS601, CS602A/CS602, CS632A/CS632, CS641A/CS641, CS654A/CS654, CS663A/CS663, CS681A/CS681, CS682A/CS682, CS697, CS698J/R



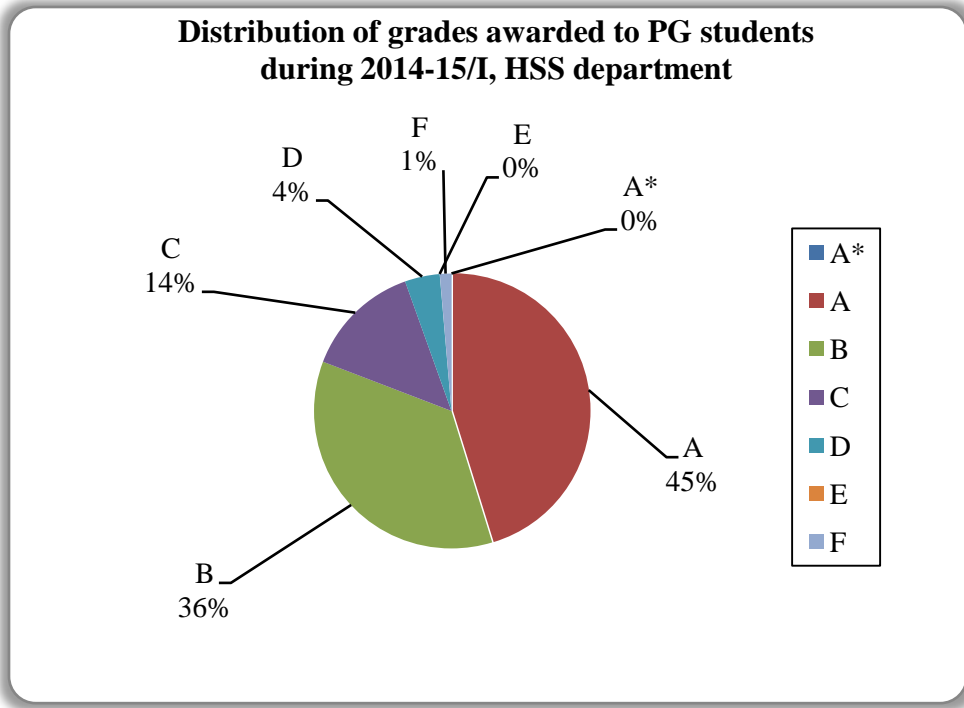
**Figure 29**

Data for course numbers: EE320, EE442A, EE601A/EE601, EE604A/EE604, EE605A/EE605, EE607A, EE610A, EE612A/EE612, EE614A/EE614, EE616A/EE616, EE618A/EE618, EE621A/EE621, EE624A/EE624, EE630A/EE630, EE632A/EE632, EE634A, EE641A/EE641, EE645A/EE645, EE646A/EE646, EE647A/EE647, EE650A/EE650, EE653A/EE653, EE654A/EE654, EE659A, EE660A/EE660, EE664A, EE670A/EE670, EE673A/EE673, EE674A/EE674, EE698A, EE698F, EE698Z/R, EE705A/EE705



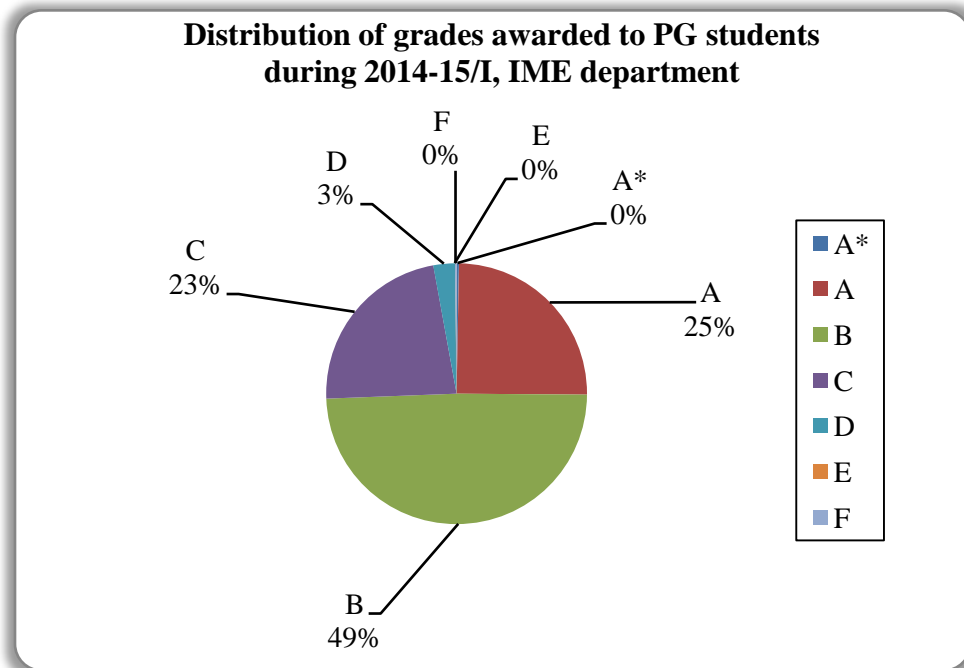
**Figure 30**

Data for course numbers: ES640A/ES640, ES642A/ES642, ES646A/ES642, ES652A



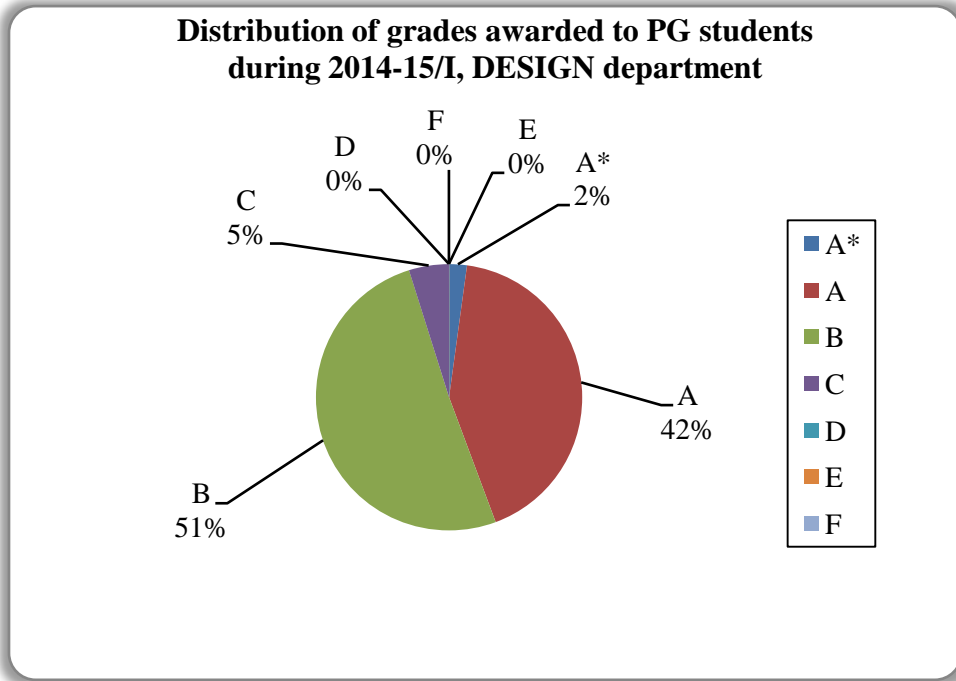
**Figure 31**

Data for course numbers: ECO201, ECO321A, ECO731A, ECO732A/ECO732, ECO734A/ECO734, ECO738A, ENG715A, ENG735A/ENG735, ENG752A/ENG752, HSS702A, PHI751A, PHI757A, PHI768A, PHI784A, PSY458, PSY774A/PSY774A, PSY775A/PSY775, PSY786A, SOC746A/SOC746, SOC751A



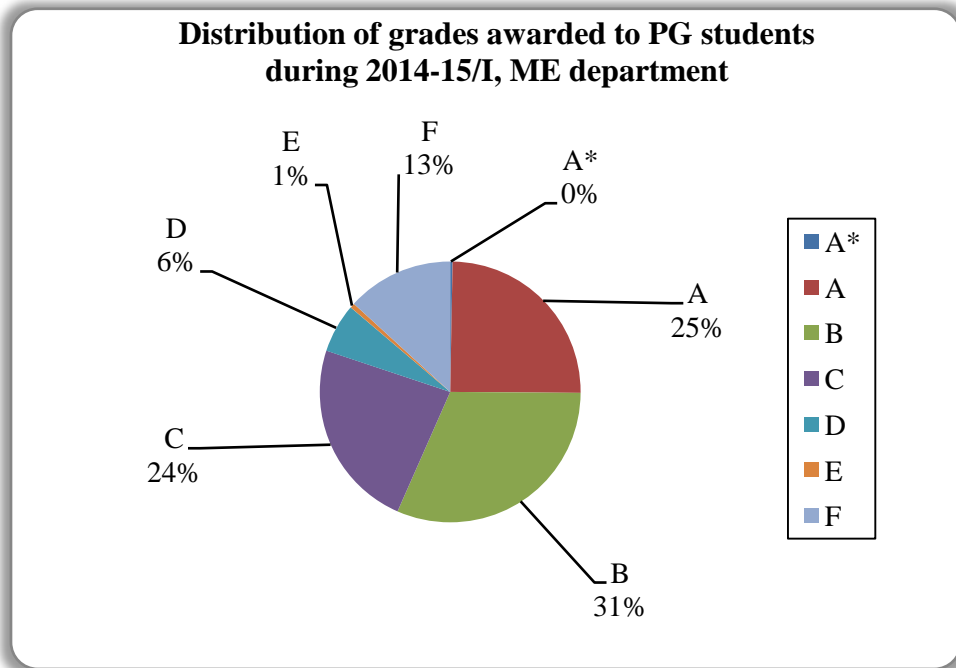
**Figure 32**

Data for course numbers: IME602A, IME603A, IME605A/IME605, IME636A/IME636, IME641A/IME641, IME692, MBA601A, MBA606A, MBA611A/MBA611, MBA622A/MBA622, MBA623, MBA631A/MBA631, MBA637, MBA639A/MBA639, MBA641A/MBA641, MBA646,



**Figure 33**

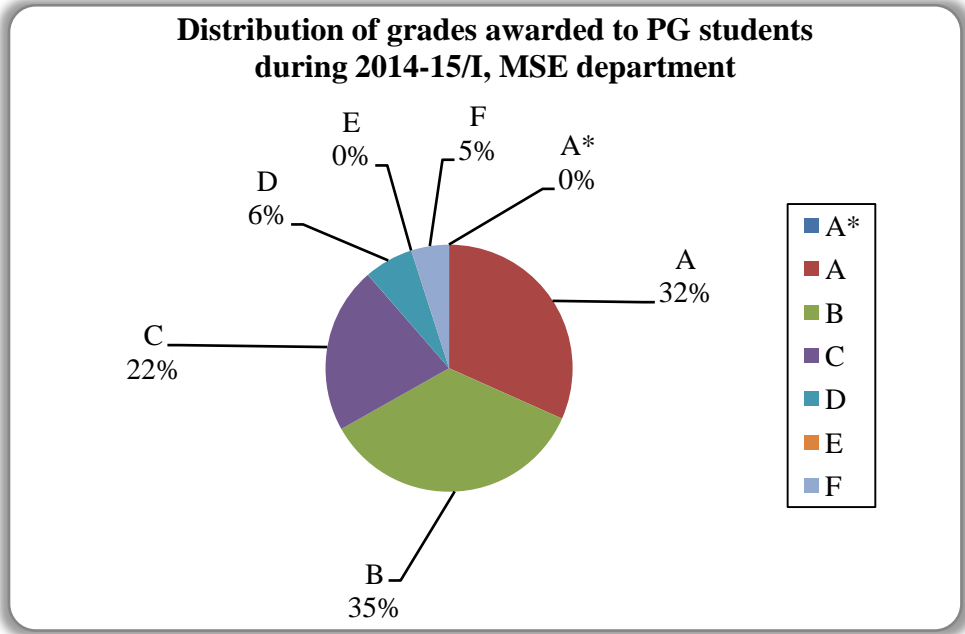
Data for course numbers: DES601A, DES602A, DES625A/DES625, DES635A, DES681A/DES681, DES698A/DES698



**Figure 34**

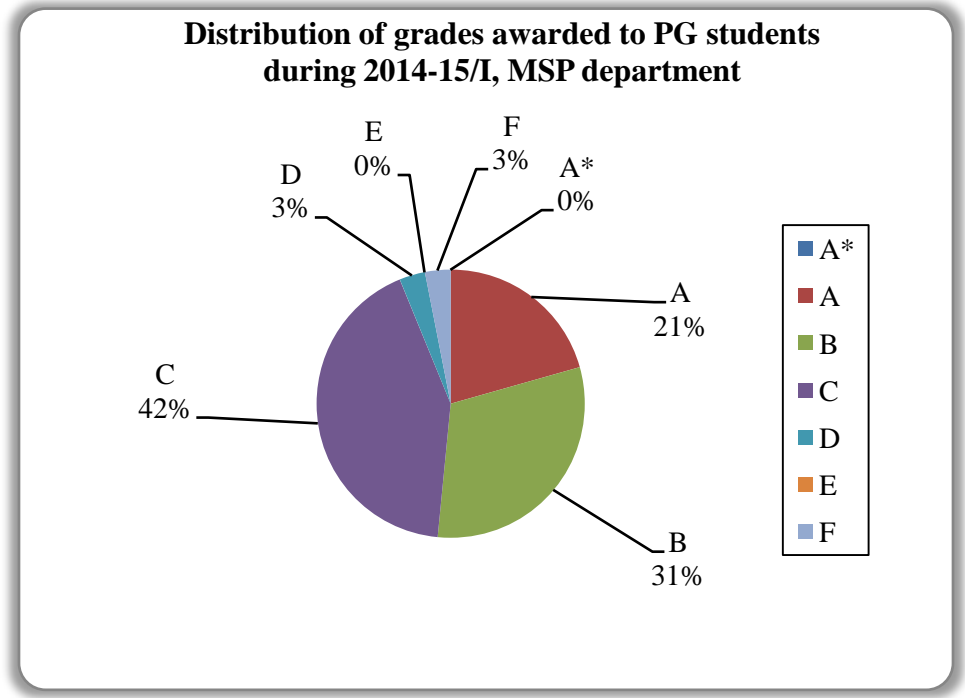
Data for course numbers: ME451A, ME621A/ME621, ME623A/ME623, ME625A/ME625, ME630A/ME630, ME631A/ME631, ME641A/ME641, ME661A/ME661, ME662A/ME662, ME681A/ME681, ME685A/ME685, ME690A/ME690, ME698M/N, ME701A,

ME723A/ME723, ME724A/ME724, ME761, ME761A/ME761, ME763A/ME763,  
 ME771A/ME771, NT611A/NT611, NT602A/NT602, NT621A, NT602A/NT602, NT621A



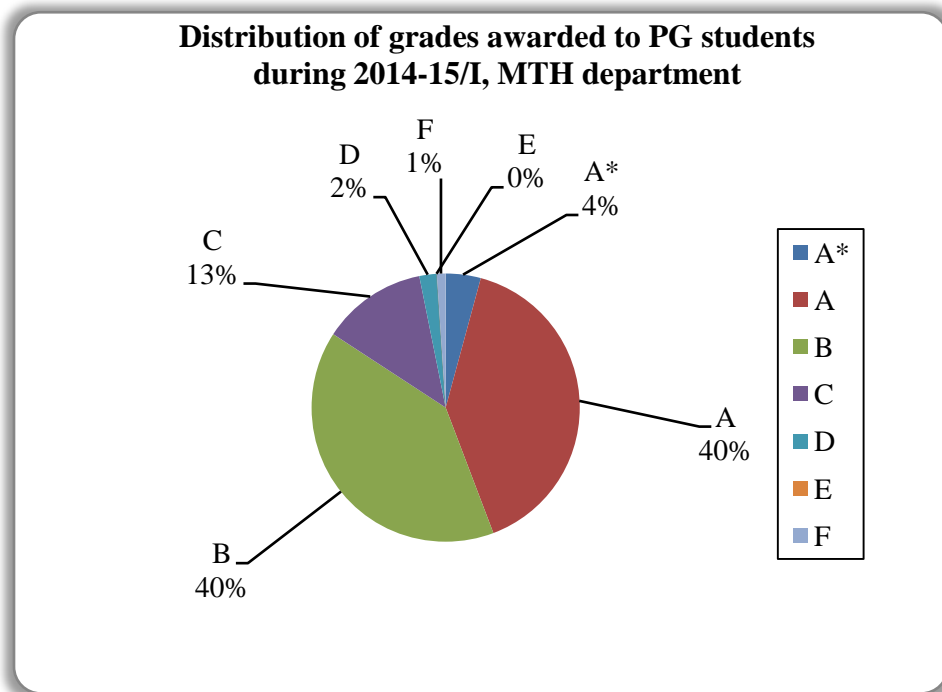
**Figure 35**

Data for course numbers: MSE302A, MSE613A/MSE613, MSE615A, MSE626A/N, MSE628A/MSE628, MSE642A/MSE642, MSE648A/MSE648, MSE658A/MSE658, MSE659A/MSE659, MSE664A/MSE664, MSE670A/MSE670, MSE671A/MSE671, MSE682A, MSE693A/MSE693, MSE694A



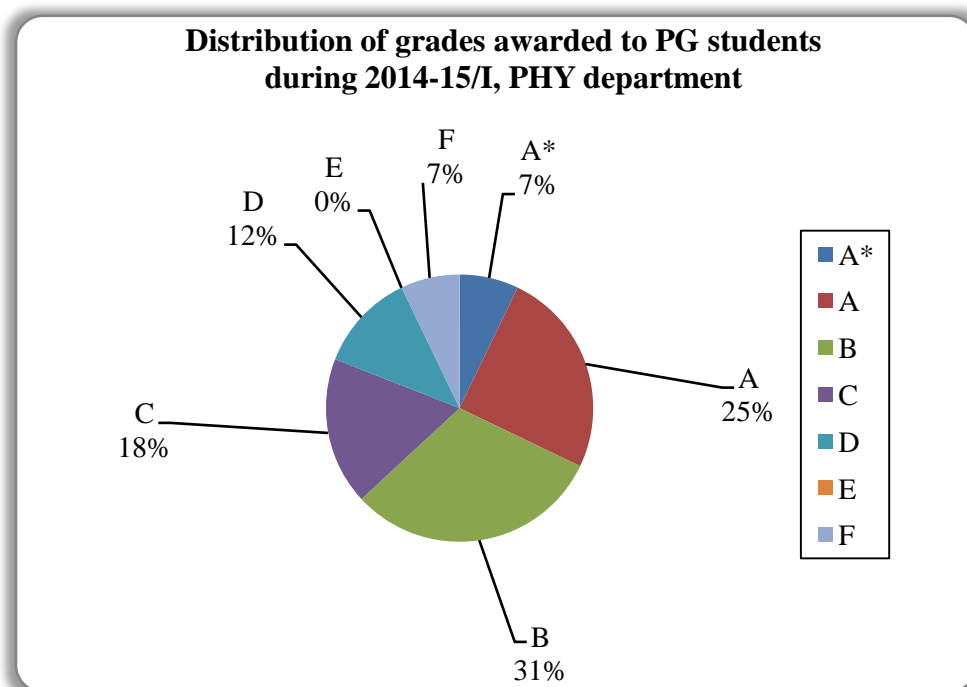
**Figure 36**

Data for course numbers: MS601A/MS601, MS605A/MS605



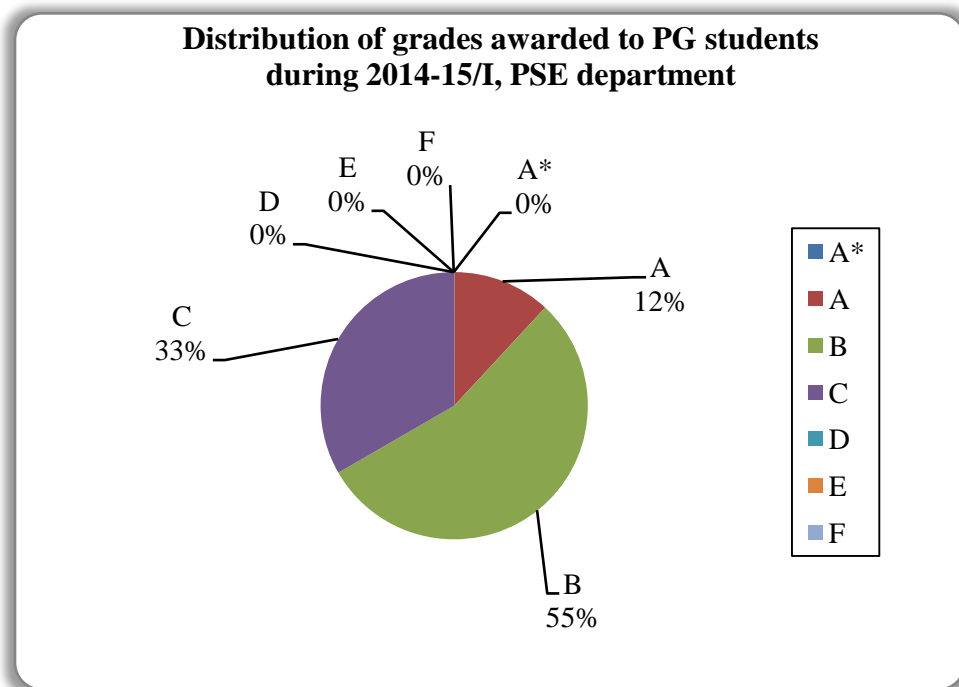
**Figure 37**

Data for course numbers: MTH611A/MTH611, MTH612A, MTH620A, MTH633A, MTH635A/MTH635, MTH648A, MTH649A/MTH649, MTH658A/MTH658, MTH686A/MTH686, MTH692A/MTH691, MTH698, MTH719, MTH736A, MTH753A/MTH753, MTH754A/MTH754, MTH755A, MTH784A/MTH784



**Figure 38**

Data for course numbers: PHY601A, PHY603A, PHY631A/PHY631, PHY632A/PHY632, PHY659A, PHY679A/PHY679, PHY681A, PHY690K, PHY690L/S, PHY690U, PHY698A, PHY781



**Figure 39**

Data for course numbers: PSE601A, PSE602A, PSE603A/PSE603

## Annexure – 1

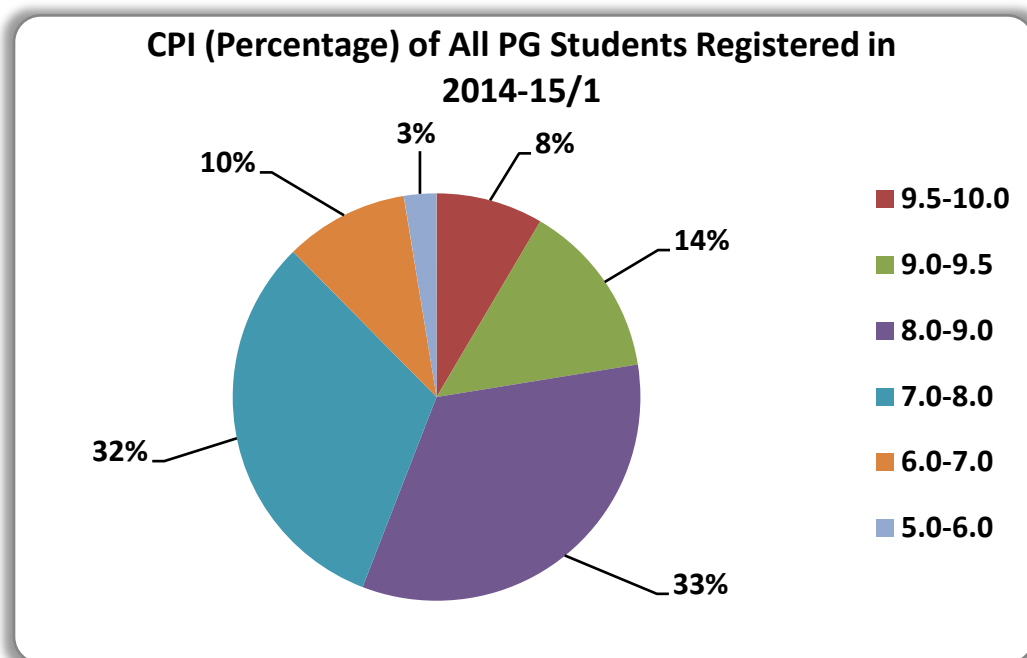
Average grade awarded to students across the Institute in 2014-15/I

Category of Students	% of Students with different grades							Average Grade (out of 10.0)
	A*	A	B	C	D	E	F	
All UG students (including core courses)	1	23	33	25	13	1	4	7.1
UG students, in Core courses only	2	21	31	26	14	2	4	7.0
All PG Students	1	28	43	21	4	0	3	7.8

## Annexure – 2

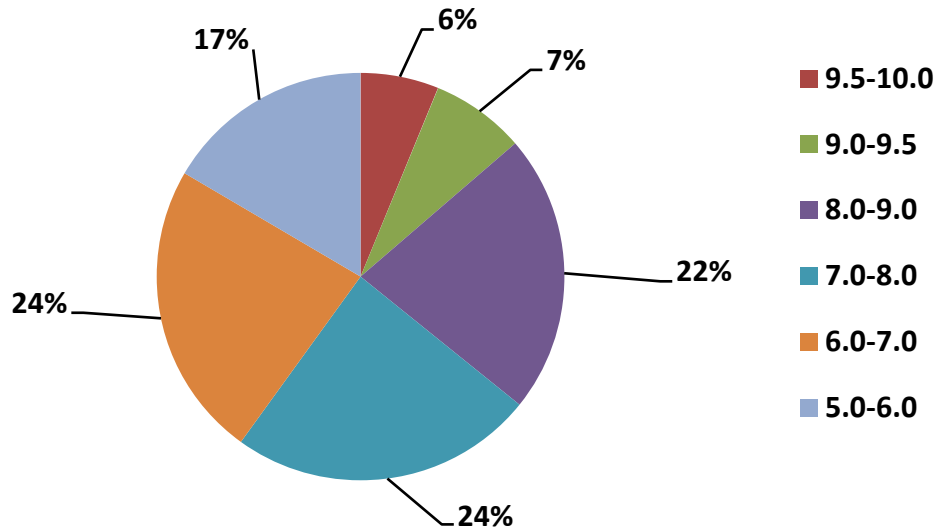
Cumulative Performance Index (CPI) Statistics of All Registered Students in 2014-15/I

Program	Total No.	9.5-10.0	9.0-9.5	8.0-9.0	7.0-8.0	6.0-7.0	5.0-6.0
PG	2478	273	449	1077	1020	316	83
UG	4007	228	274	812	887	862	607
CORE COURSES (UG)	961	78	57	195	176	184	124

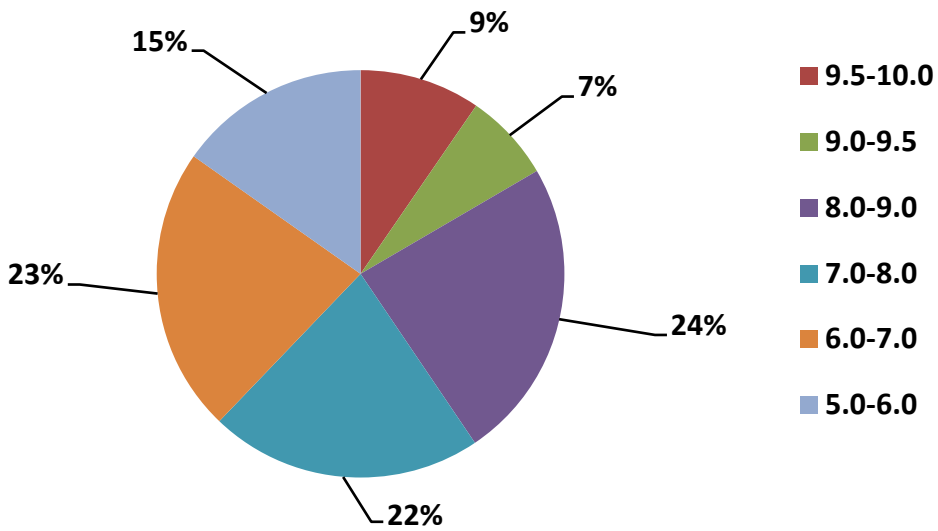




**CPI (Percentage) of All UG Students Registered in 2014-15/1**



**CPI (Percentage) of All CORE COURSES (UG) Students Registered in 2014-15/1**



\*\*\*\*\*