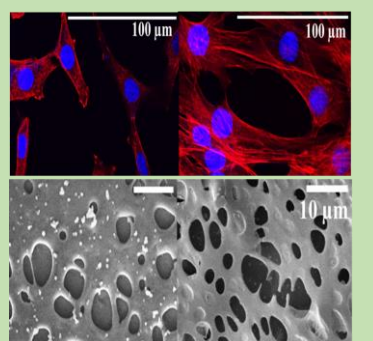
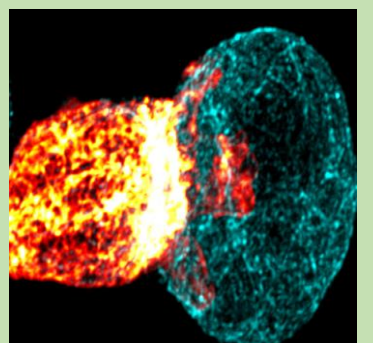
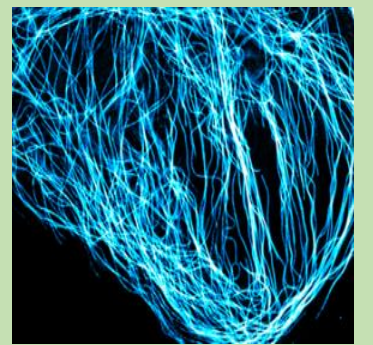


## Department of Biological Sciences & Bioengineering, IIT Kanpur PhD, MTech Admissions-2026

The BSBE department at IIT Kanpur is engaged in cutting-edge, interdisciplinary research in biological sciences, bioengineering, and biomedical engineering in the following specialized areas:

Antimicrobial resistance, autophagy, biomaterials, biosensors, brain-machine interface, cancer genomics, CAR T cell therapy, computational biology, controlled drug delivery, diabetes and obesity, gene therapy, genetic disorders, GPCRs, host-pathogen interactions, immunotherapeutic, ion channels, metabolic disorders, microbiota, mitochondrial diseases, molecular oncology, neural systems and sensory coding, neuroscience of decision making, neurodegenerative diseases, neuronal development, protein aggregation, skeletal development and osteoarthritis, super-resolution imaging, systems neurophysiology, vaccine development, and virophysics.



Applications are invited from students of Biology and Non-biology background with a Bachelor's or Master's degree in  
**SCIENCE, ENGINEERING & MEDICINE**

Last date of application: 13<sup>th</sup> April, 2026 (2 PM).

PhD Interview dates: 19<sup>th</sup> - 23<sup>rd</sup> May 2026.

APPLICATION PORTAL:

<https://iitk.ac.in/doaa/pgadmission/>

