

STATISTICAL REPORT
OF
GRADES AWARDED
2012-13/I



February-2013

Office of the Dean of Academic Affairs

Indian Institute of Technology Kanpur

LIST OF CONTENTS

S.No.	CONTENTS	Page No.
1.	Figure 1: Distribution of all grades awarded to UG and PG students across the institute.	1
2.	Figure 2: Distribution of all grades awarded to UG students	1
3.	Figure 3: Distribution of all Core courses grades awarded to UG students	2
4.	Figure 4: Distribution of all grades awarded to PG students	2
5.	Figure 5: Distribution of all grades awarded to UG students	3
6.	Figure 6: Distribution of all grades awarded to PG students	4
7.	Figure 7: AE department distribution of grades awarded to UG students	5
8.	Figure 8: BSBE department distribution of grades awarded to UG students	5
9.	Figure 9: CE department distribution of grades awarded to UG students	6
10.	Figure 10: CHE department distribution of grades awarded to UG students	6
11.	Figure 11: CHM department distribution of grades awarded to UG students	7
12.	Figure 12: CSE department distribution of grades awarded to UG students	7
13.	Figure 13: EE department distribution of grades awarded to UG students	8
14.	Figure 14: HSS department distribution of grades awarded to UG students	8
15.	Figure 15: IME department distribution of grades awarded to UG students	9
16.	Figure 16: Design department distribution of grades awarded to UG students	9
17.	Figure 17: ME department distribution of grades awarded to UG students	10
18.	Figure 18: MSE department distribution of grades awarded to UG students	10
19.	Figure 19: MTH department distribution of grades awarded to UG students	11
20.	Figure 20: PHY department distribution of grades awarded to UG students	11
21.	Figure 21: AE department distribution of grades awarded to PG students	12
22.	Figure 22: BSBE department distribution of grades awarded to PG students	12
23.	Figure 23: CE department distribution of grades awarded to PG students	13
24.	Figure 24: CHE department distribution of grades awarded to PG students	13
25.	Figure 25: CHM department distribution of grades awarded to PG students	14
26.	Figure 26: CSE department distribution of grades awarded to PG students	14
27.	Figure 27: EE department distribution of grades awarded to PG students	15
28.	Figure 28: HSS department distribution of grades awarded to PG students	15
29.	Figure 29: IME department distribution of grades awarded to PG students	16
30.	Figure 30: Design department distribution of grades awarded to PG students	16
31.	Figure 31: ME department distribution of grades awarded to PG students	17
32.	Figure 32: MSE department distribution of grades awarded to PG students	17
33.	Figure 33: MSP department distribution of grades awarded to PG students	18
34.	Figure 34: MTH department distribution of grades awarded to PG students	18
35.	Figure 35: PHY department distribution of grades awarded to PG students	19

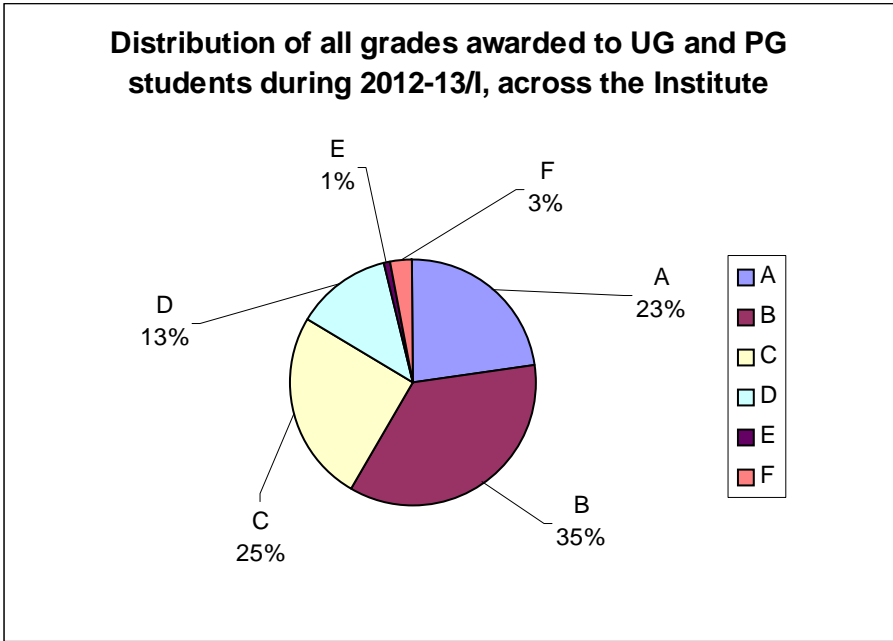


Figure 1
 Distribution of all grades awarded to UG and PG students across the institute

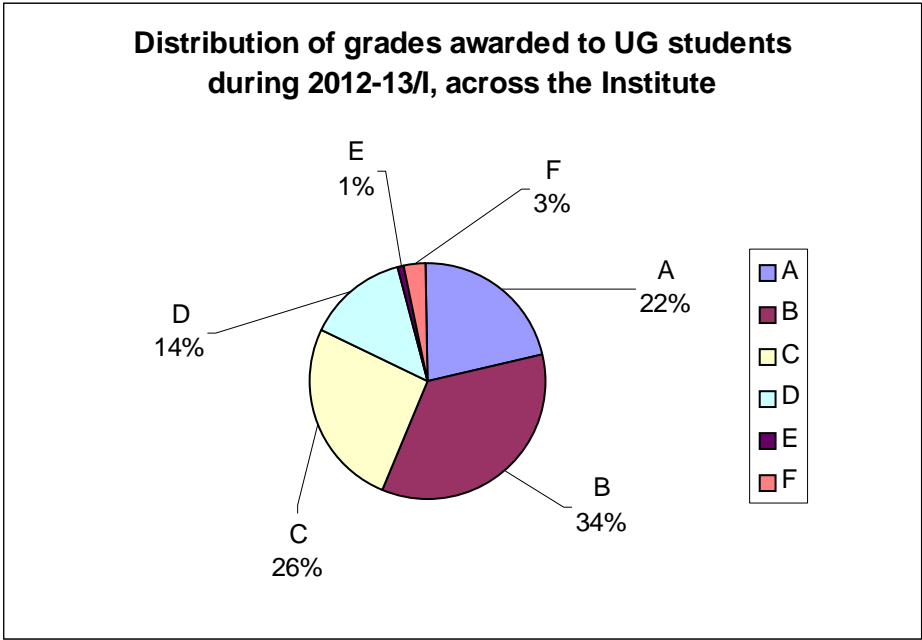


Figure 2
 (UG students) include all students who have a 5-digit roll number
 (All B.Tech, Msc-2yr, BT part of BT-MT)

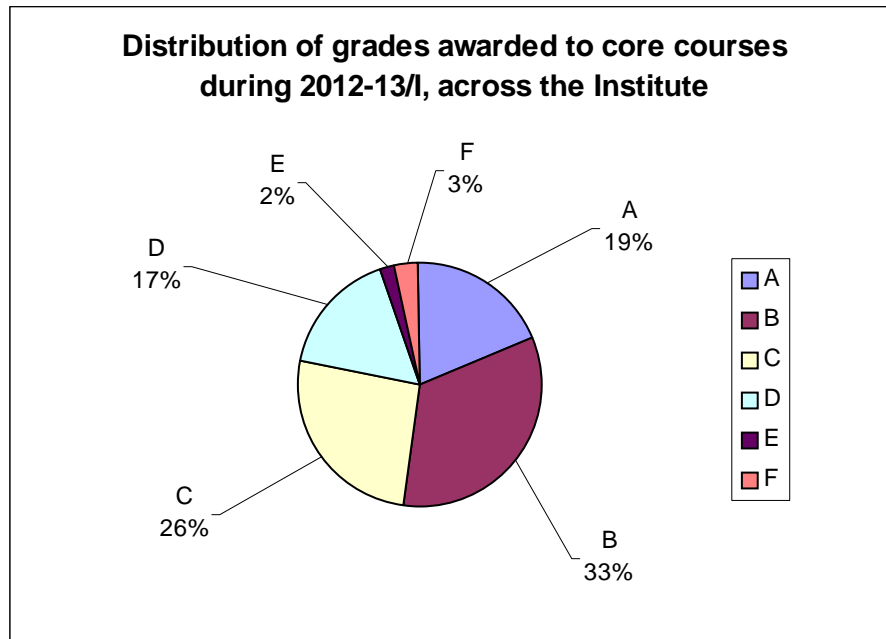


Figure 3:

Data for Core course numbers: ART105A, ART106A, CHM101A, ECO101A, ENG112C, ENG123A, ESC101A, ESC201A, ESO201A, ESO202A, ESO203A, ESO204A, ESO205A, ESO207A, ESO206A, ESO208A, ESO209A, LIF101A, MSO202A, MSO203B, MTH101A, PHI141A, PHI142A, PHY101A, PHY102A, PHY103A, PSY151A, PSY151B, SOC171A, SOC173A, TA101A, TA201A, TA202A

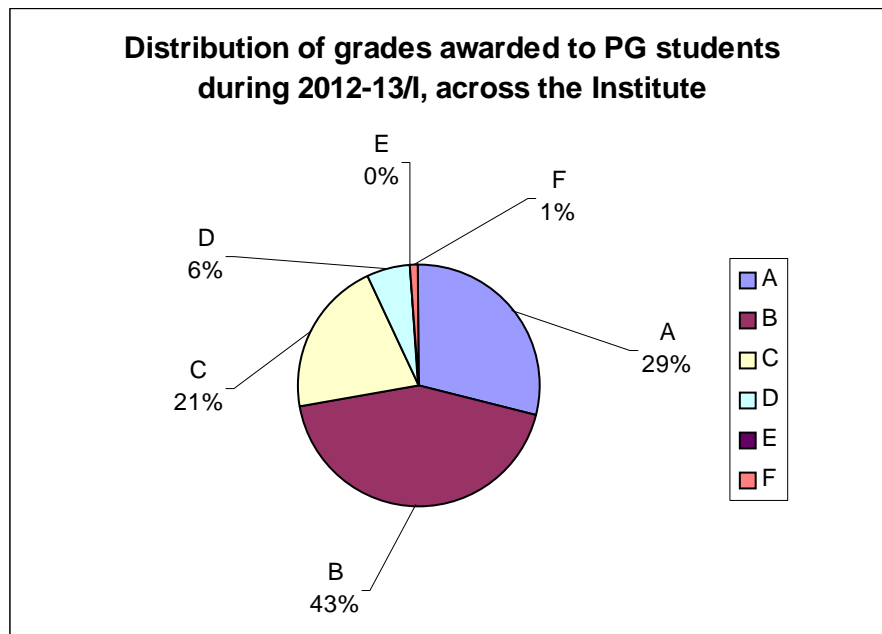


Figure 4:

PG students include all students
(All M.Tech, MT Part of BT-MT, PhD, MBA, M.Des)

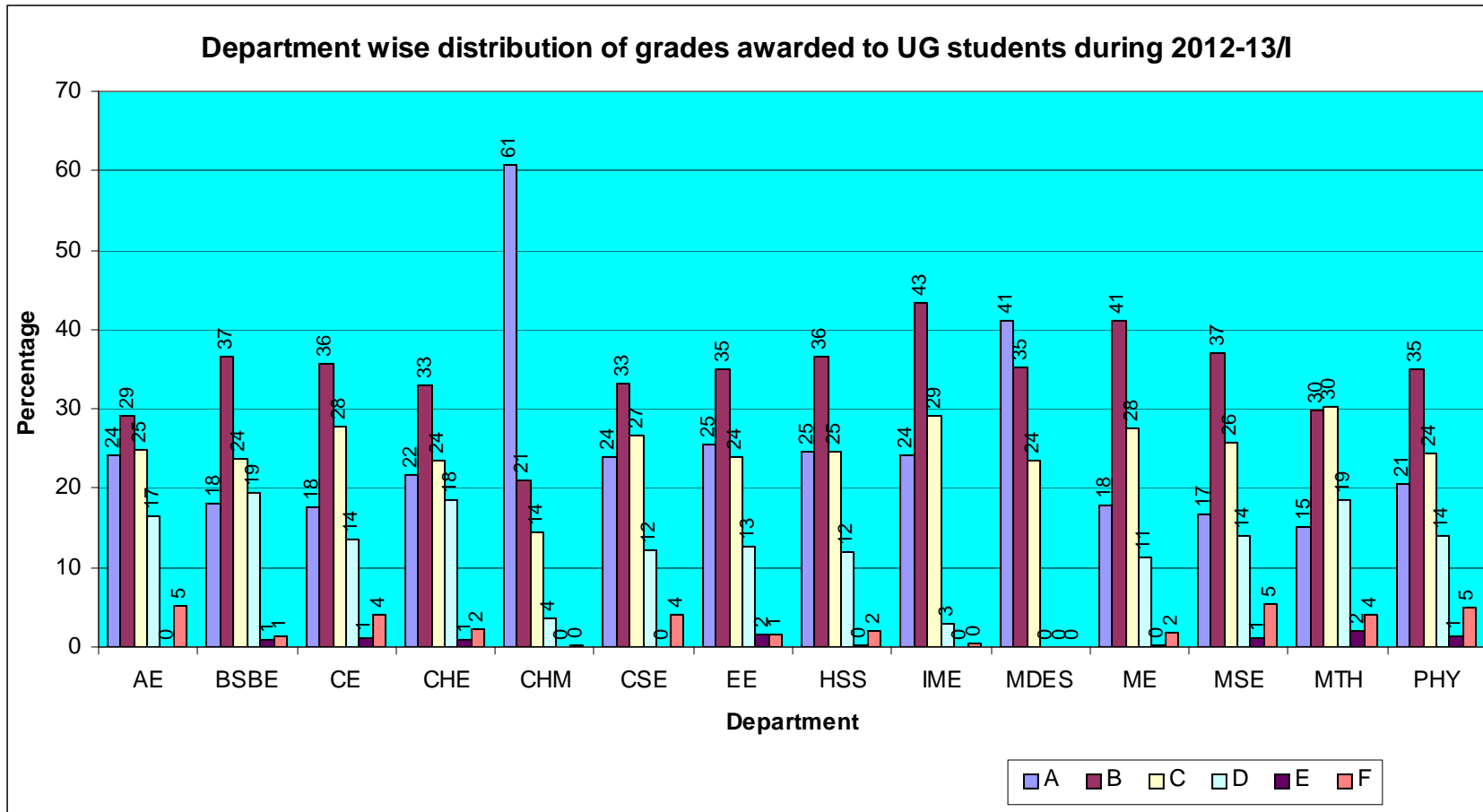


Figure 5
Distribution of all grades awarded to UG students

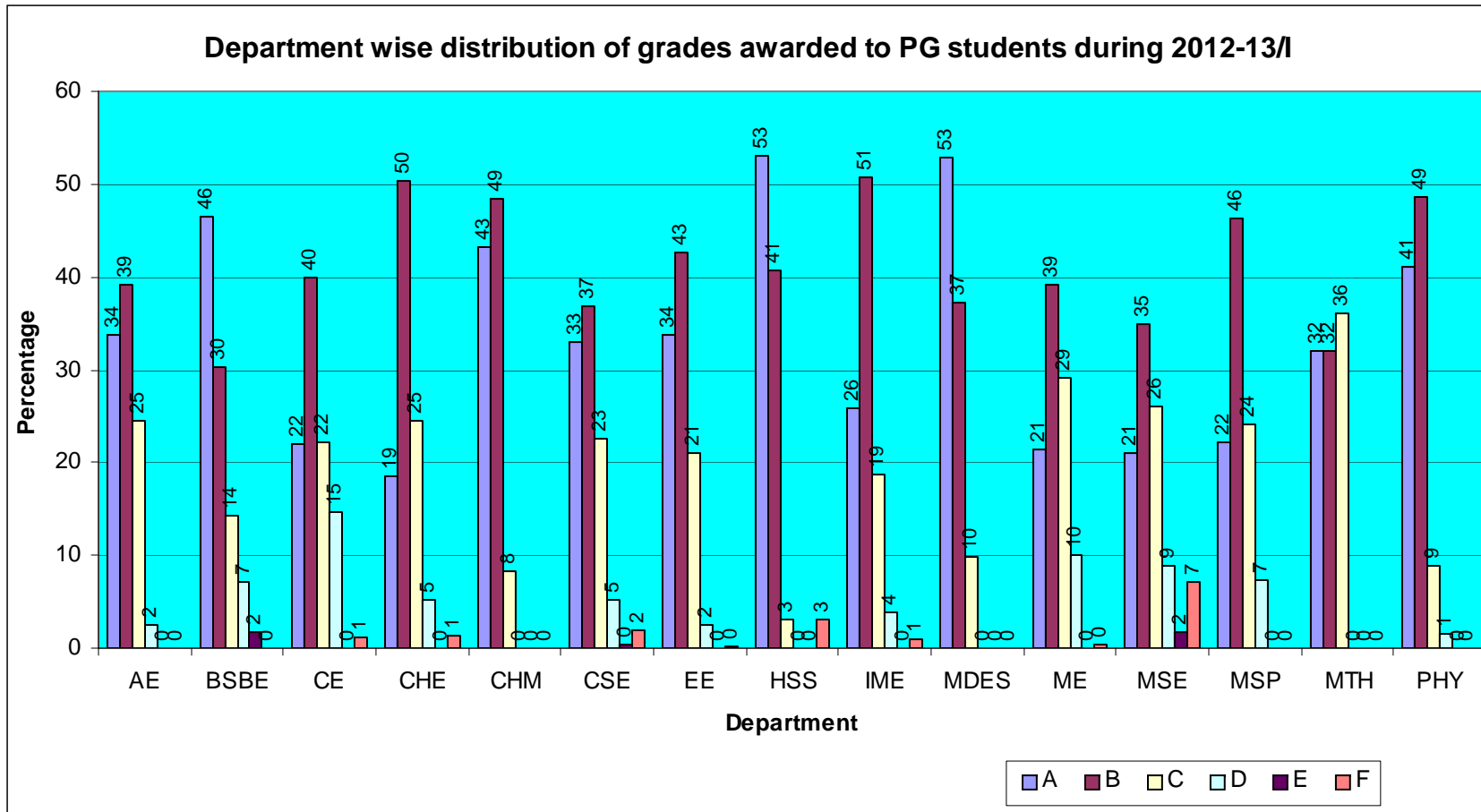


Figure 6:
Distribution of all grades awarded to PG students

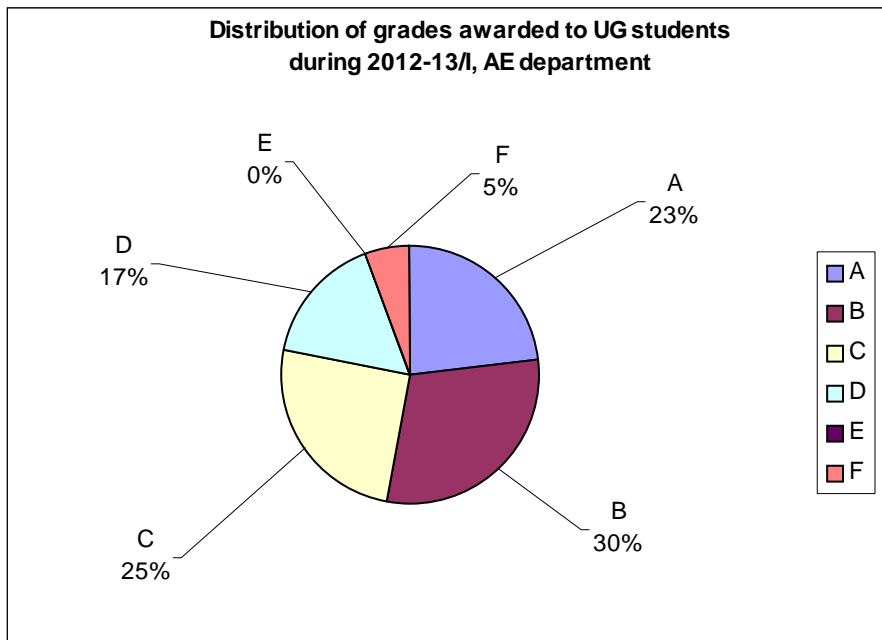


Figure 7

Data for course numbers: AE201A, AE321, AE331, AE341, AE361, AE411, AE461, AE603, AE618, AE621, AE649, AE650, AE684, AE686, AE698B, AE753, ESO204A

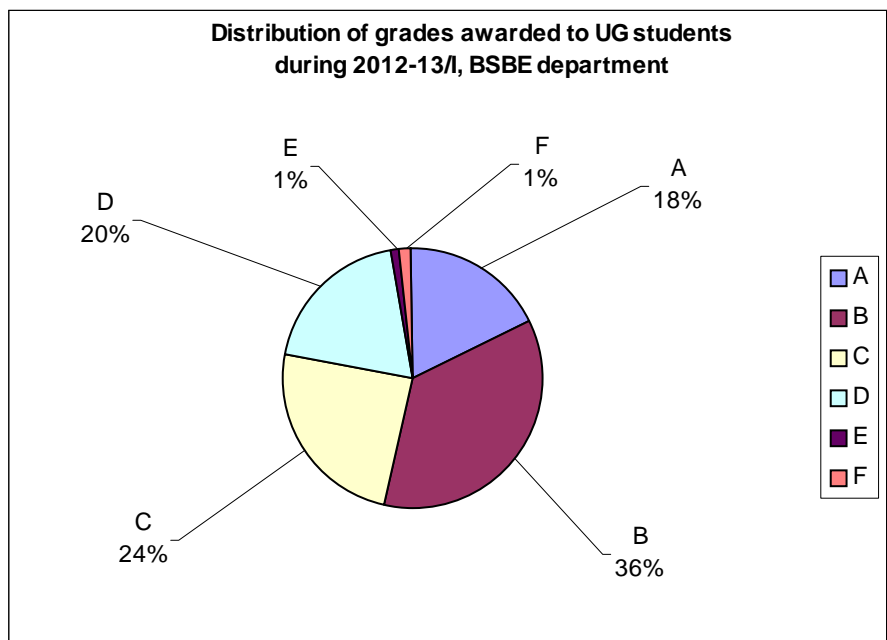


Figure 8

Data for course numbers: BSE211A, BSE322, BSE341, BSE352, BSE391, BSE441, BSE491, BSE615, BSE629, BSE630, ESO206A, LIF101A

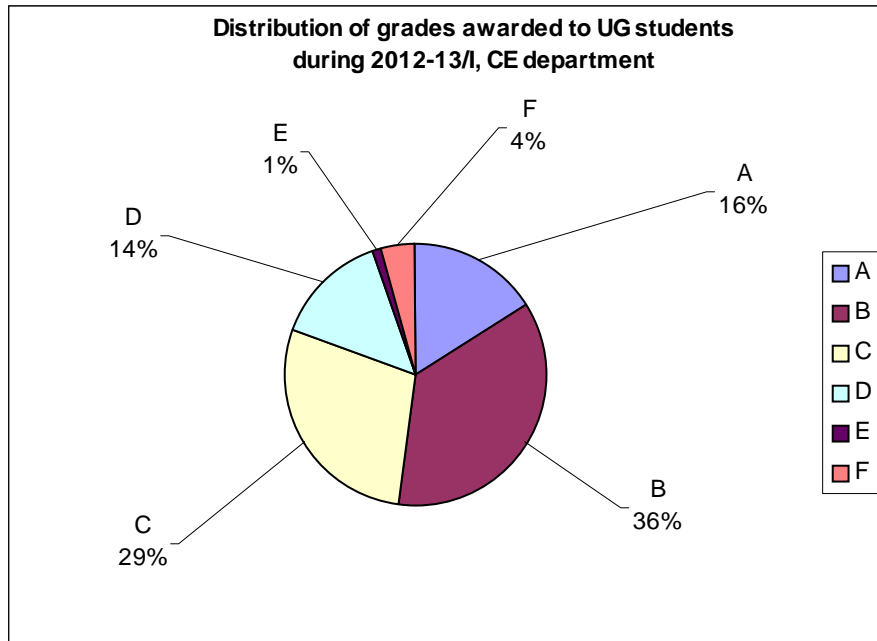


Figure 9

Data for course numbers: CE211A, CE311, CE321, CE331, CE371, CE451, CE452, CE601, CE620, CE621N, CE623, CE631N, CE642, CE652, CE671N, CE677N, CE688, CE733, EEM602, EEM603, EEM606, EEM613, ESO202A, ESO208A

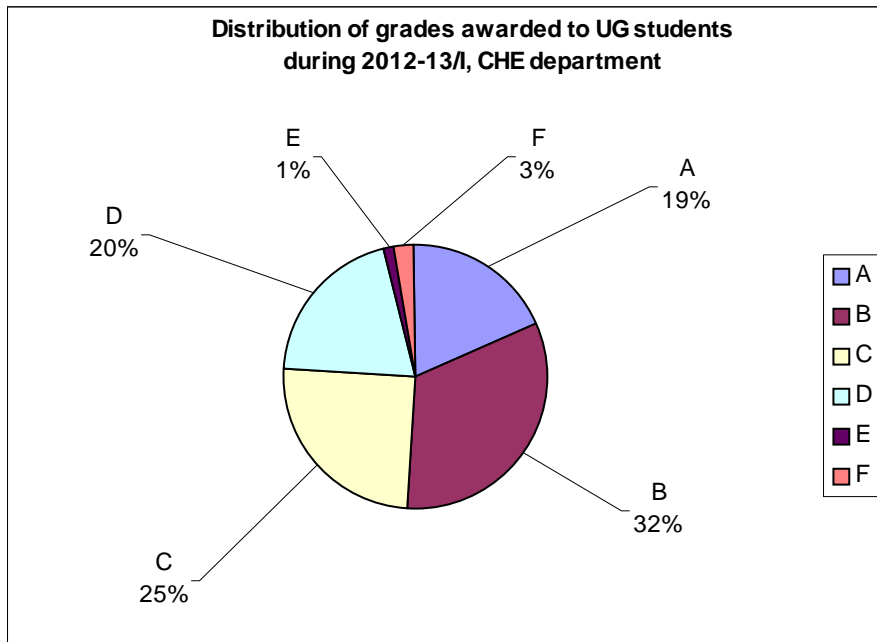


Figure 10

Data for course numbers: CHE251A, CHE312, CHE331, CHE361, CHE453, CHE492, CHE611, CHE618, CHE621, CHE631, CHE645, CHE679, CHE684, ESO201A

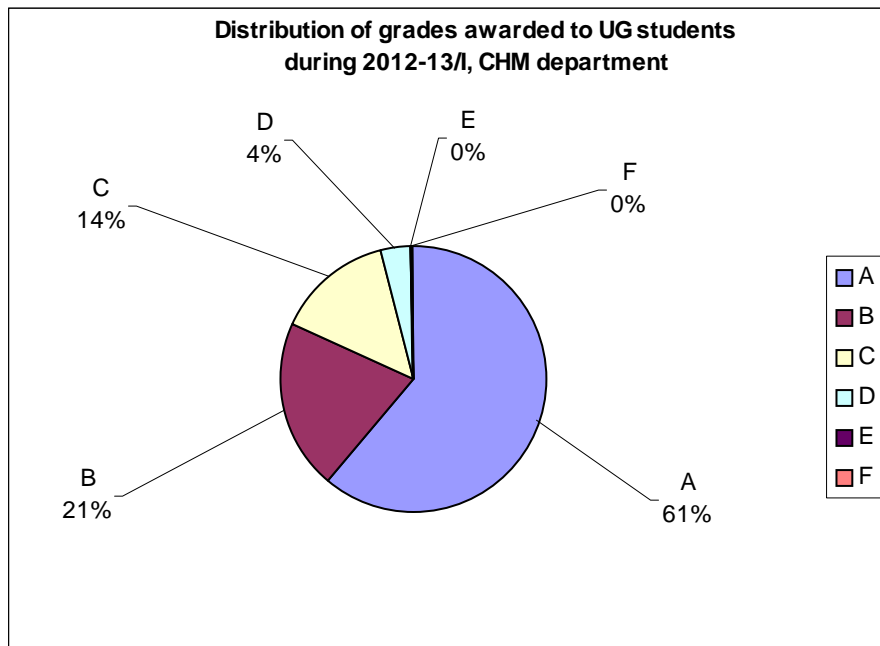


Figure 11

Data for course numbers: CHM101A, CHM203A, CHM401, CHM421, CHM423, CHM441, CHM503, CHM521, CHM611, CHM614, CHM616, CHM621, CHM646, CHM651, CHM664, CHM679, CHM681

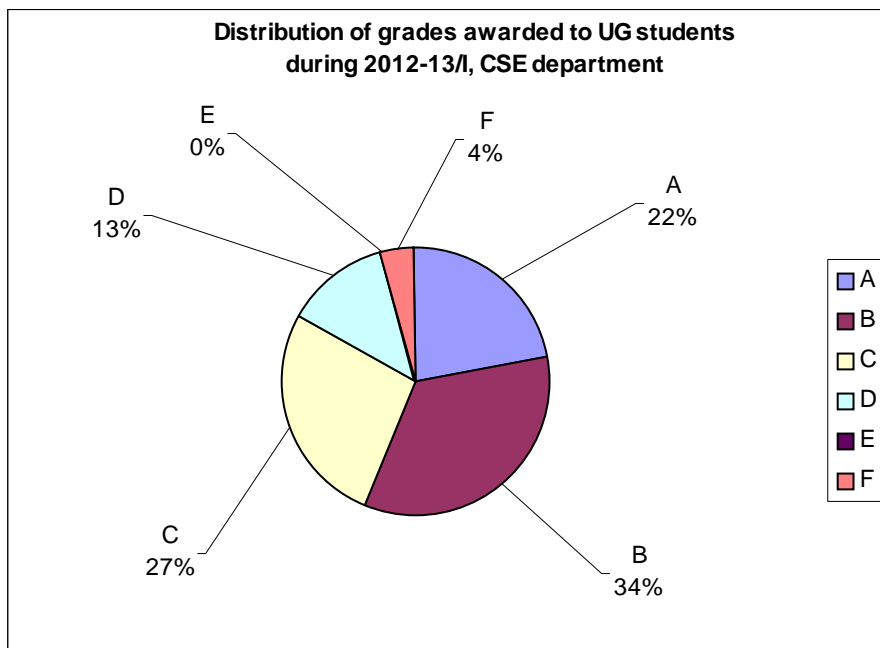


Figure 12

Data for course numbers: CS210A, CS220, CS251A, CS302, CS330, CS340, CS350, CS425, CS455, CS622, CS632, CS644, CS676, CS677, CS681, CS685, CS698X, CS738, CS746, ESC101A, ESO207A

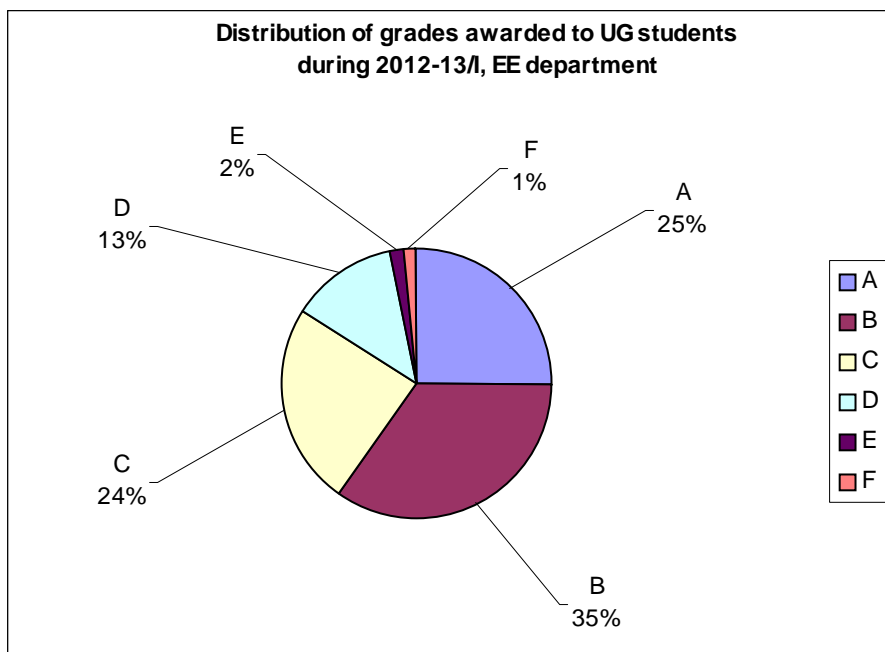


Figure 13

Data for course numbers: EE200A, EE320, EE330, EE370, EE380, EE602, EE604, EE610, EE612, EE614, EE616, EE621, EE624, EE627, EE634, EE641, EE650, EE658, EE660, EE664, EE673, EE698B, EE698E, ESC201A, ESO203A

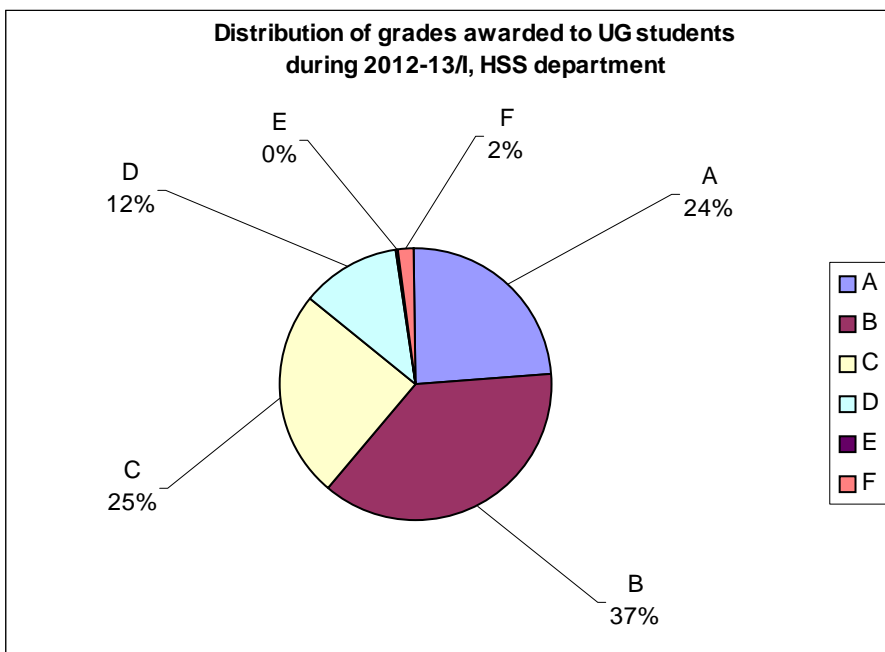


Figure 14

Data for course numbers: ART105A, ART106A, ART402, ECO101A, ECO201A, ECO311, ECO321, ECO333, ECO341, ECO413, ECO422, ECO424, ECO434, ECO514, ECO535, ECO540, ENG112C, ENG123A, ENG445, ENG743, PHI141A, PHI142A, PHI455, PSY151A, PSY151B, PSY451, PSY458, SOC171A, SOC173A, SOC479, SOC489

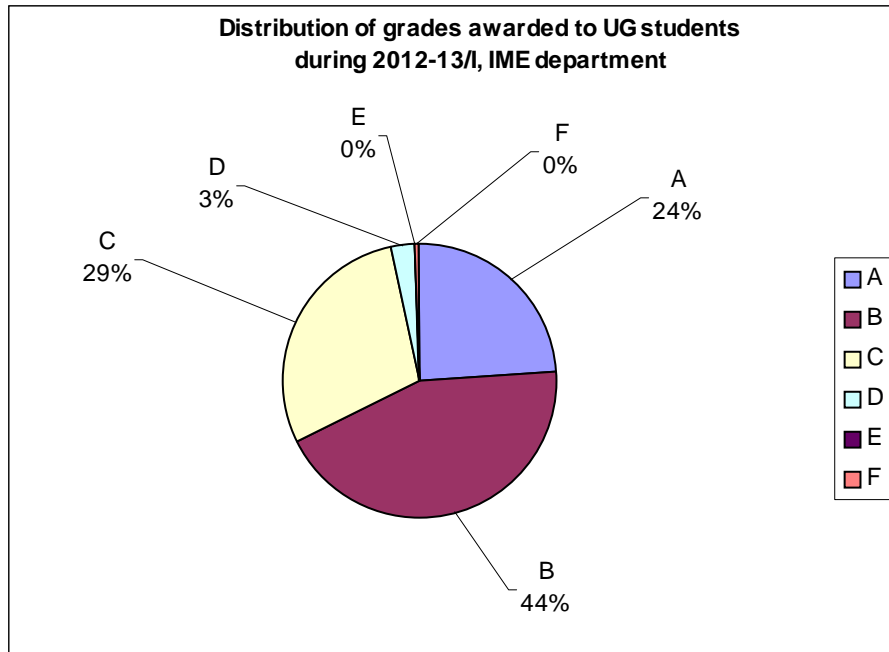


Figure 15

Data for course numbers: IME602, IME605, IME636, MBA606, MBA611, MBA617, MBA622, MBA631, MBA639, MBA640, MBA644, MBA646, MBA664, MBA675

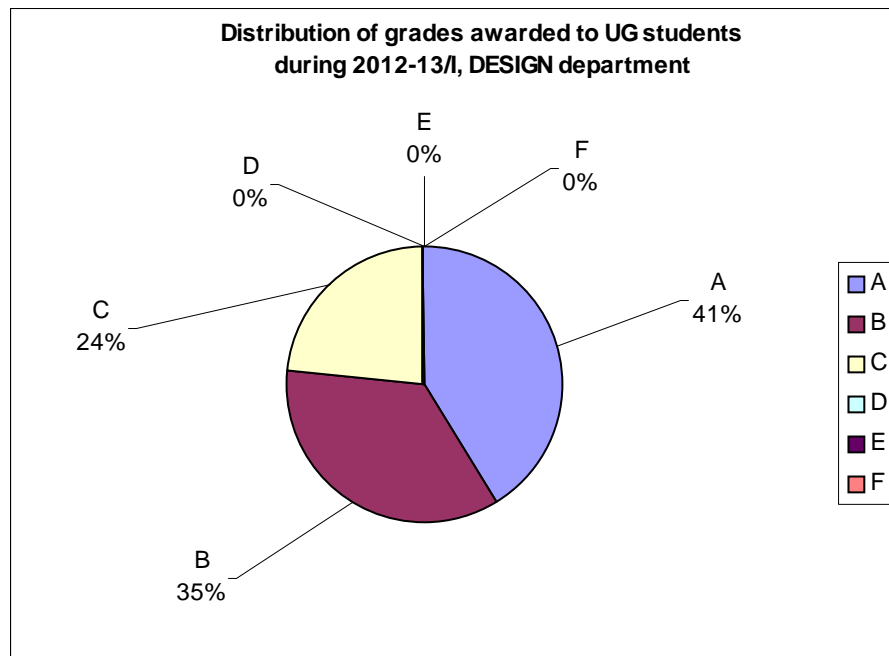


Figure 16

Data for course numbers: DES601, DES633

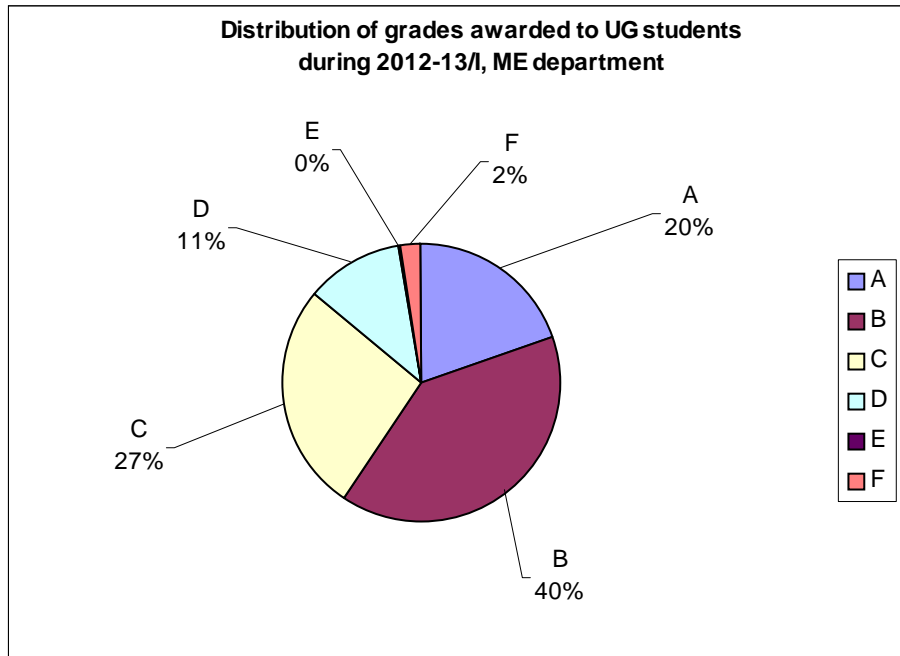


Figure 17

Data for course numbers: ESO209A, ME251A, ME321, ME341, ME352, ME361, ME401, ME453, ME471N, ME623, ME630, ME631, ME641, ME661, ME662, ME671, ME685, ME690, ME727, ME757, NT602, NT611, SE381, TA101A, TA202A

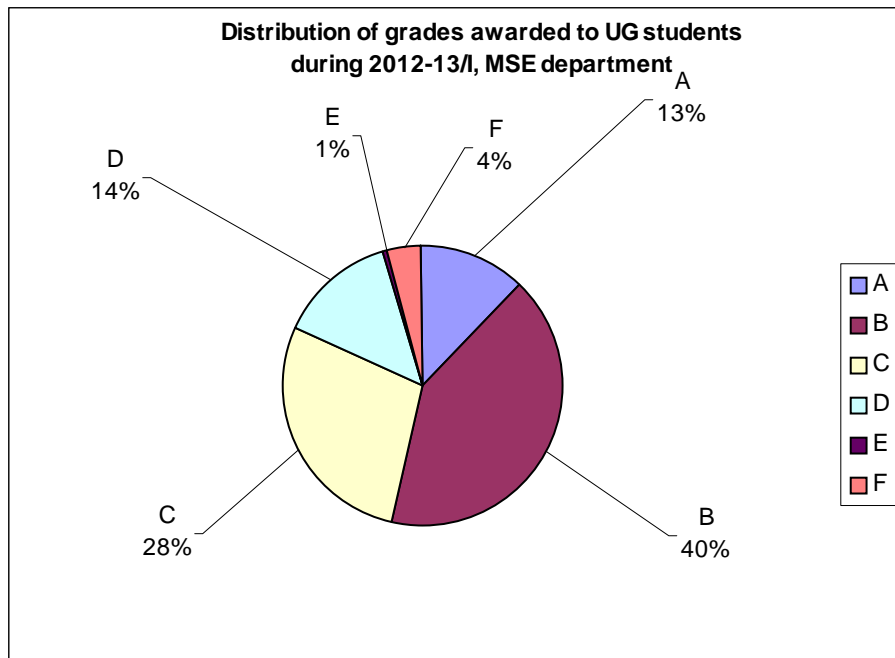


Figure 18

Data for course numbers: ESO205A, MSE201A, MSE310, MSE320, MSE330, MSE410, MSE415, SE470, MSE650, MSE653, MSE664, MSE689, MSE694, TA201A

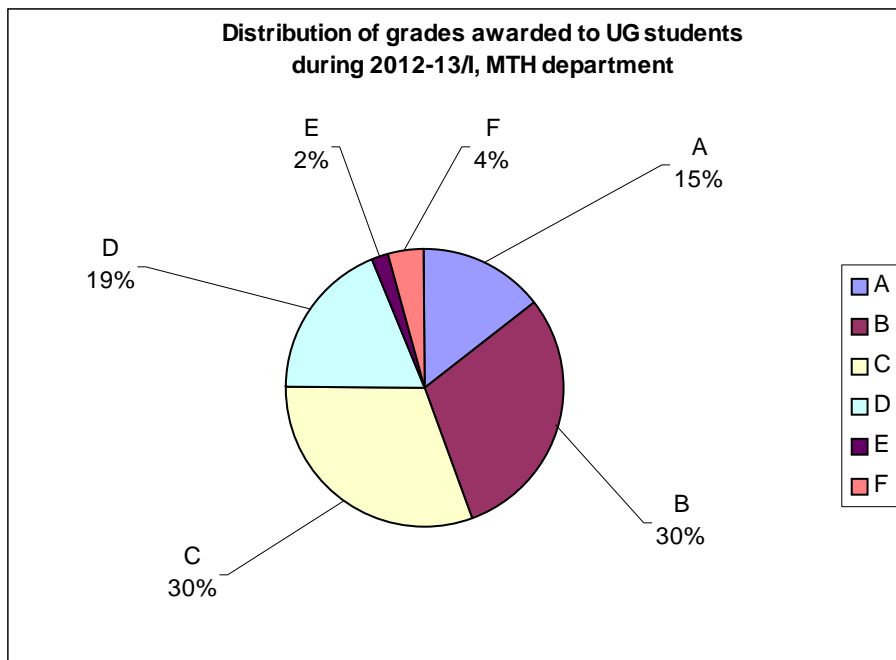


Figure 19

Data for course numbers: MSO202A, MSO203B, MTH101A, MTH201, MTH202, MTH204A, MTH205, MTH301, MTH311, MTH401, MTH403, MTH405, MTH409, MTH413, MTH415, MTH417, MTH421, MTH423, MTH428, MTH513, MTH515, MTH517, MTH552, MTH612, MTH620, MTH676, MTH691, MTH692

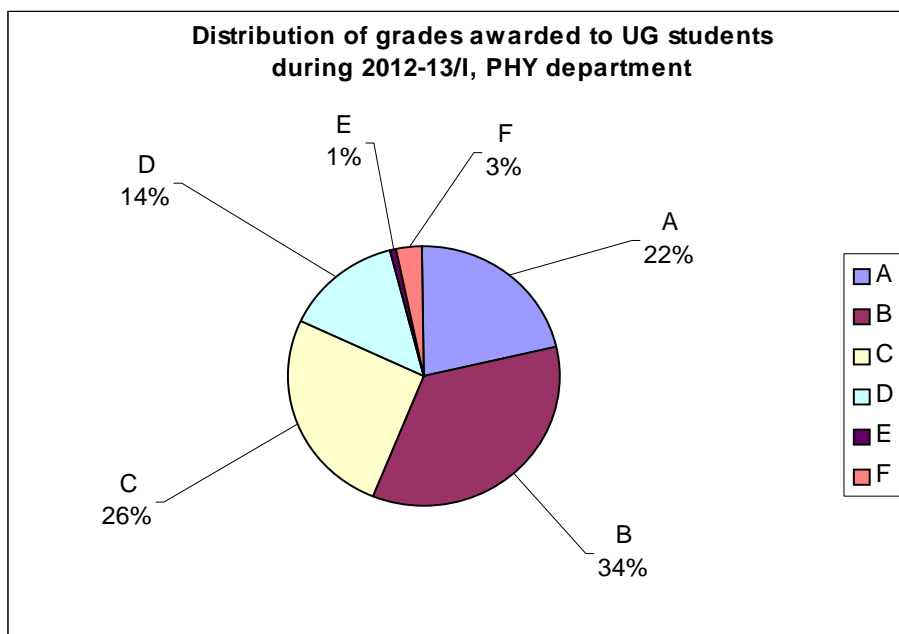


Figure 20

Data for course numbers: PHY101A, PHY102A, PHY103A, PHY224A, PHY305, PHY307, PHY315, PHY401, PHY407, PHY421, PHY431, PHY441, PHY461, PHY543, PHY552, PHY611, PHY613, PHY617, PHY672, PHY681, PHY682, PHY690A, PHY690P, PHY695

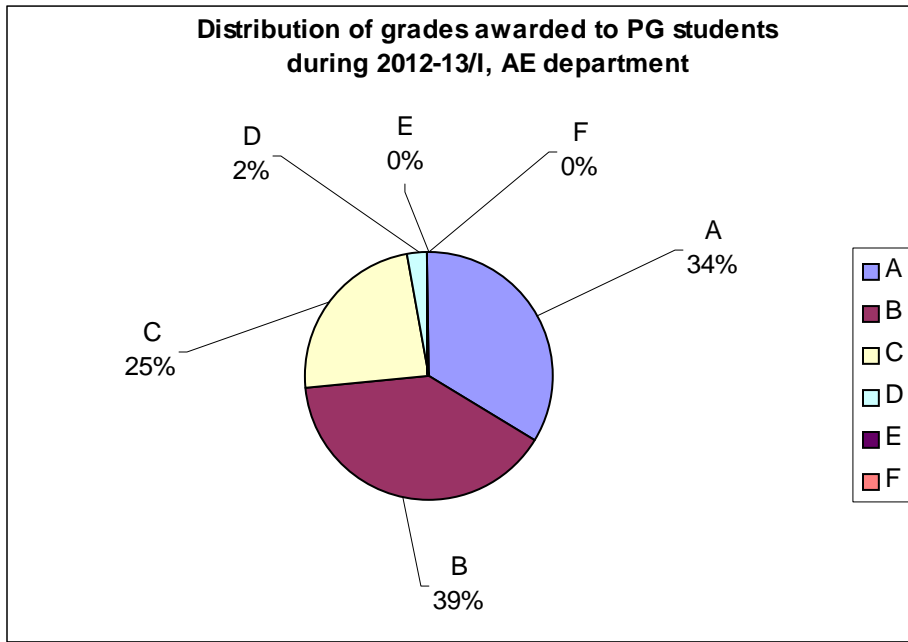


Figure 21

Data for course numbers: AE461, AE601, AE602, AE603, AE610, AE618, AE621, AE647, AE649, AE650, AE670, AE684, AE686, AE688, AE698B, AE753

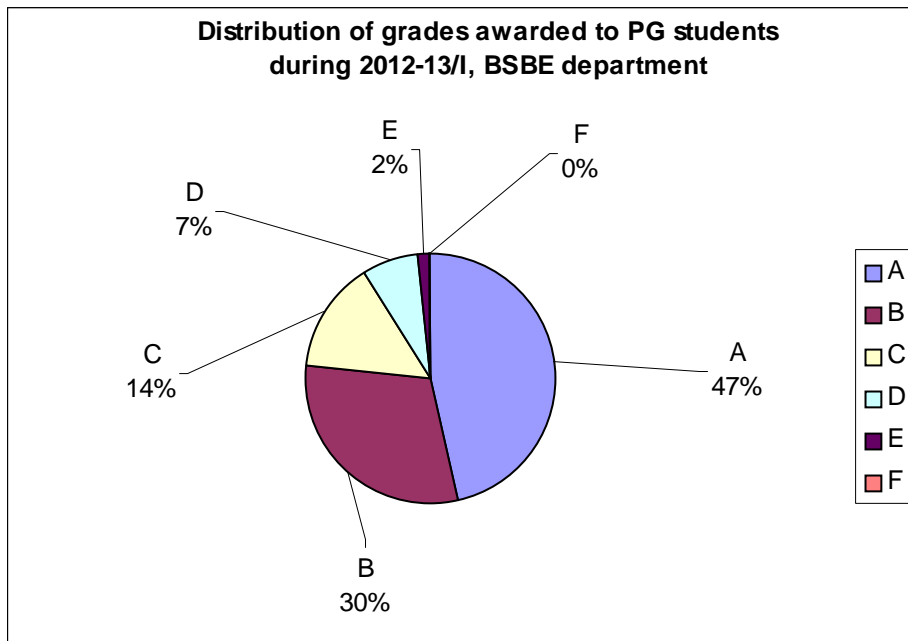


Figure 22

Data for course numbers: BSE613, BSE615, BSE629, BSE630, BSE632, BSE640, BSE641, BSE671, BSE681

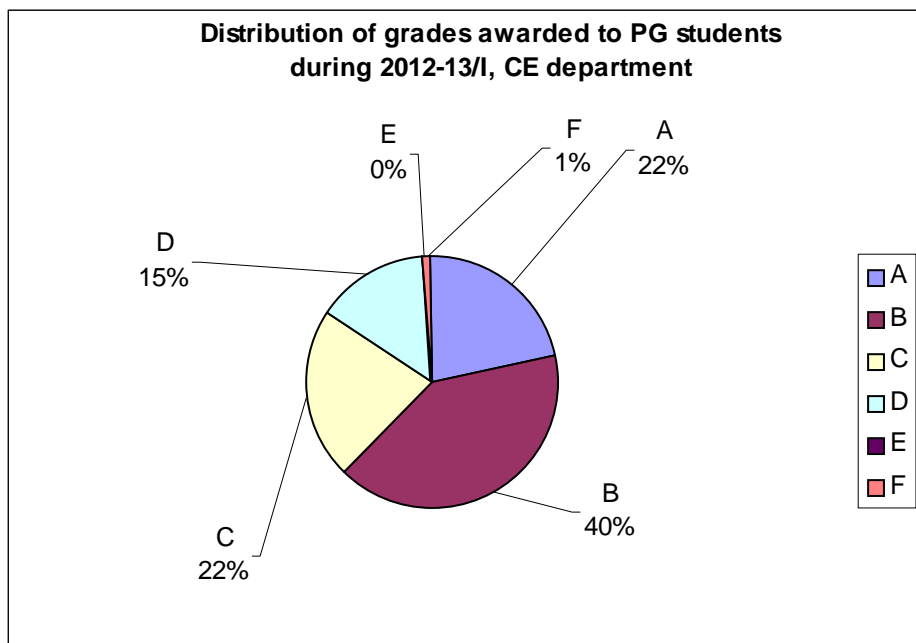


Figure 23

Data for course numbers: CE601, CE602, CE610, CE611N, CE612, CE620, CE621N, CE623, CE631N, CE638, CE640, CE642, CE652, CE671N, CE677N, CE683, CE688, CE733, EEM602, EEM603, EEM606, EEM613

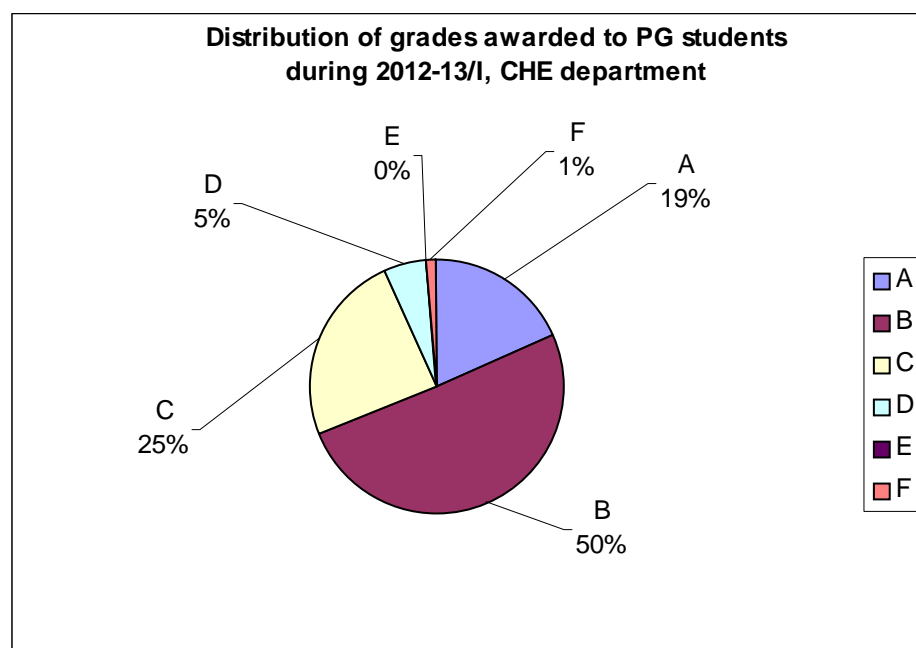


Figure 24

Data for course numbers: CHE453, CHE601, CHE602, CHE611, CHE618, CHE621, CHE631, CHE645, CHE679, CHE684

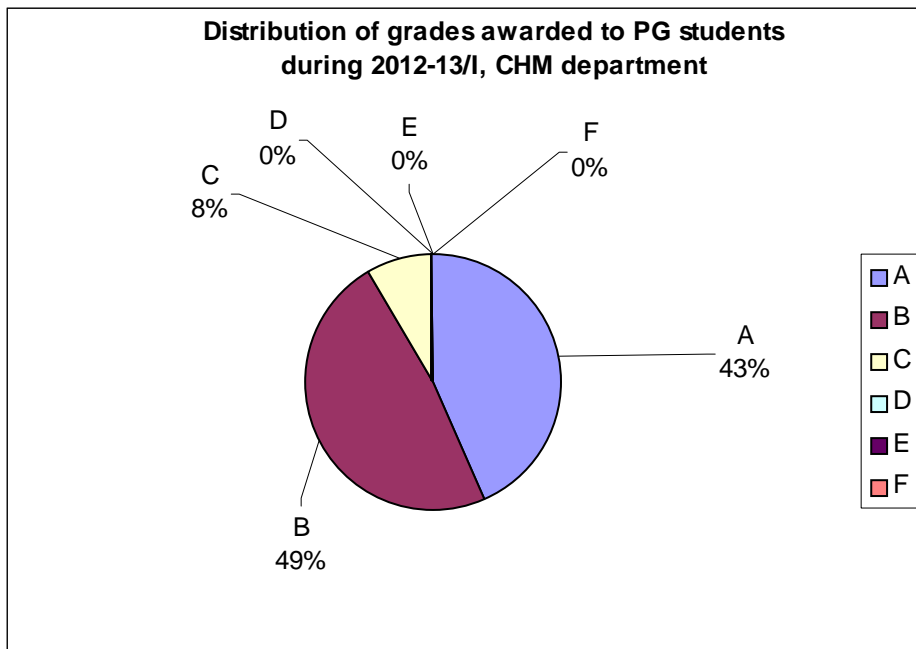


Figure 25

Data is for course numbers: CHM600, CHM609, CHM611, CHM614, CHM616, CHM621, CHM629, CHM646, CHM649, CHM651, CHM664, CHM679, CHM681

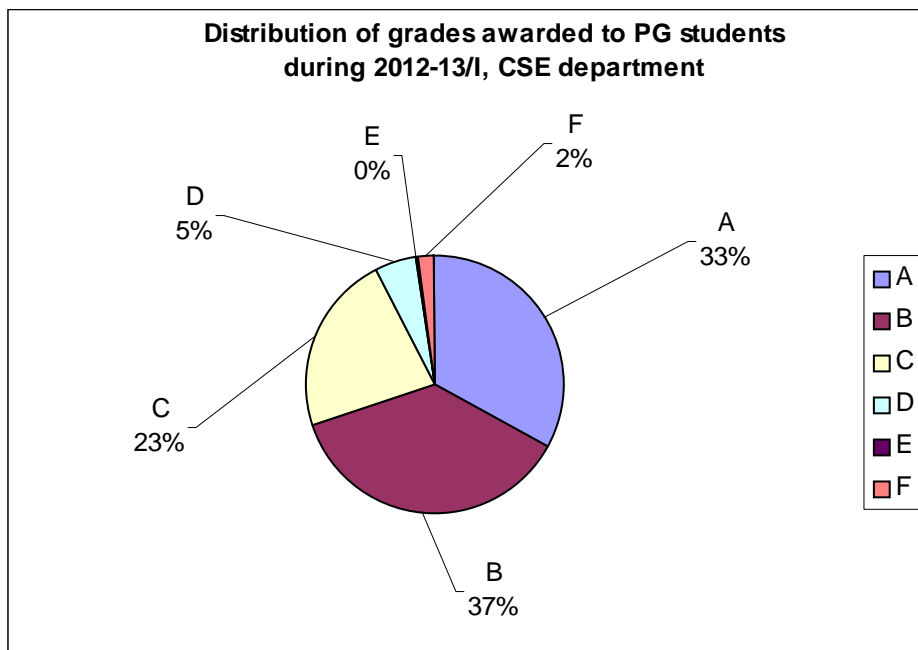


Figure 26

Data for course numbers: CS601, CS602, CS622, CS632, CS644, CS676, CS677, CS681, CS685, CS698X, CS727, CS738, CS746

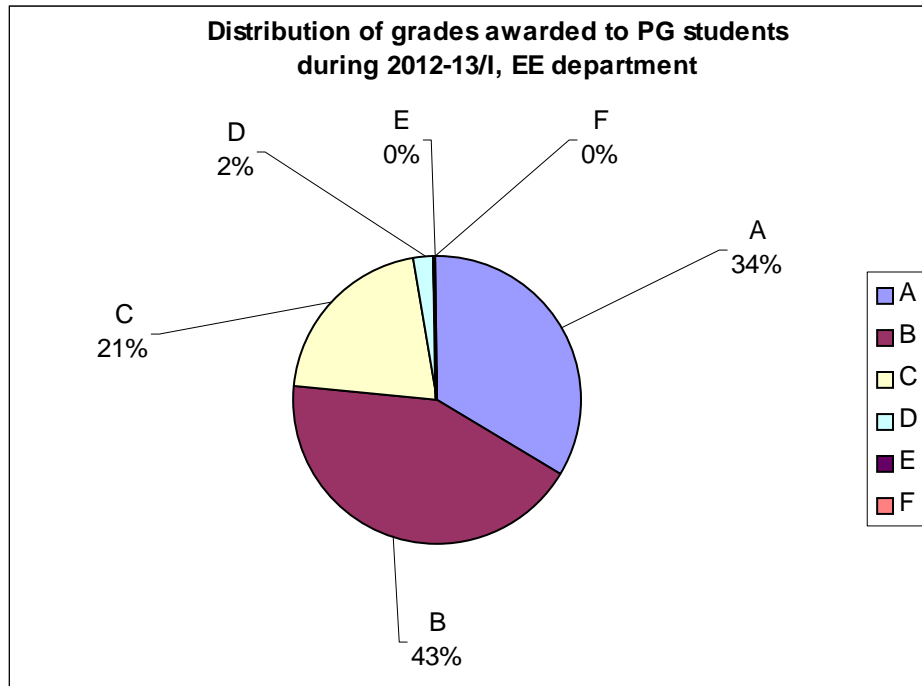


Figure 27

Data for course numbers: EE602, EE604, EE605, EE610, EE612, EE614, EE616, EE621, EE624, EE627, EE630, EE634, EE641, EE644, EE647, EE650, EE658, EE660, EE664, EE673, EE698, EE698B, LT631

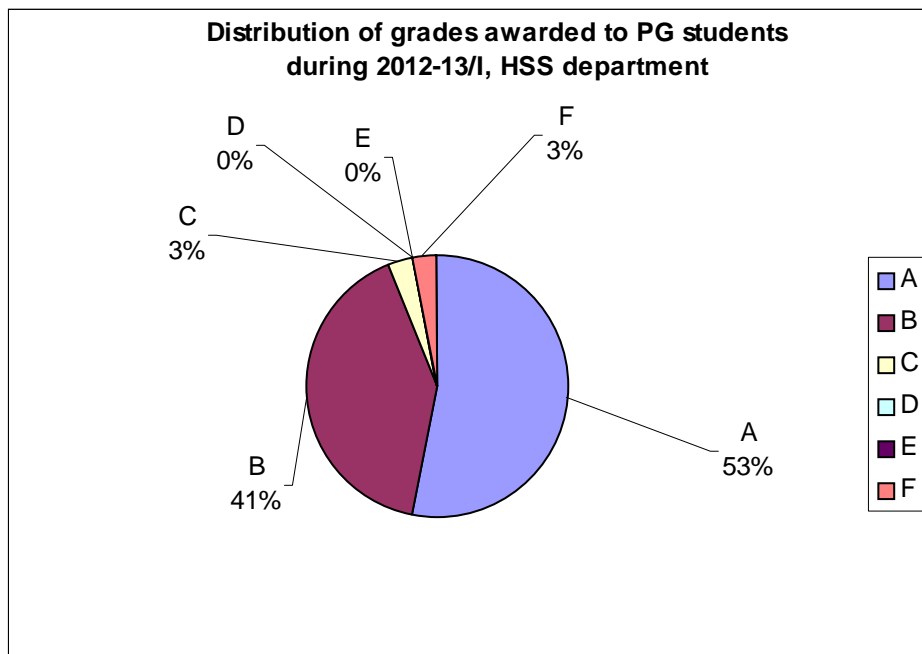


Figure 28

Data for course numbers: ART105, ECO732, ECO734, ECO738, ECO740, ENG715, ENG733, ENG743, ENG749, PHI774, PSY776, PSY783, PSY787, PSY798, SOC489

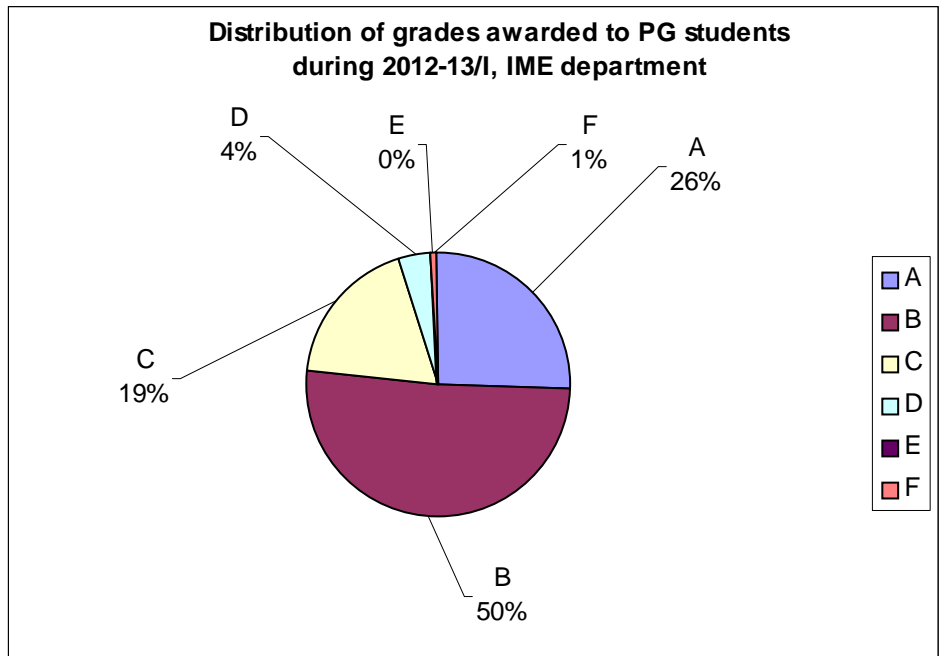


Figure 29

Data for course numbers: IME602, IME603, IME605, IME636, IME684, IME692, MBA601, MBA606, MBA611, MBA617, MBA622, MBA623, MBA631, MBA637, MBA639, MBA640, MBA641, MBA644, MBA646, MBA651, MBA664, MBA675, MBA676, MBA679

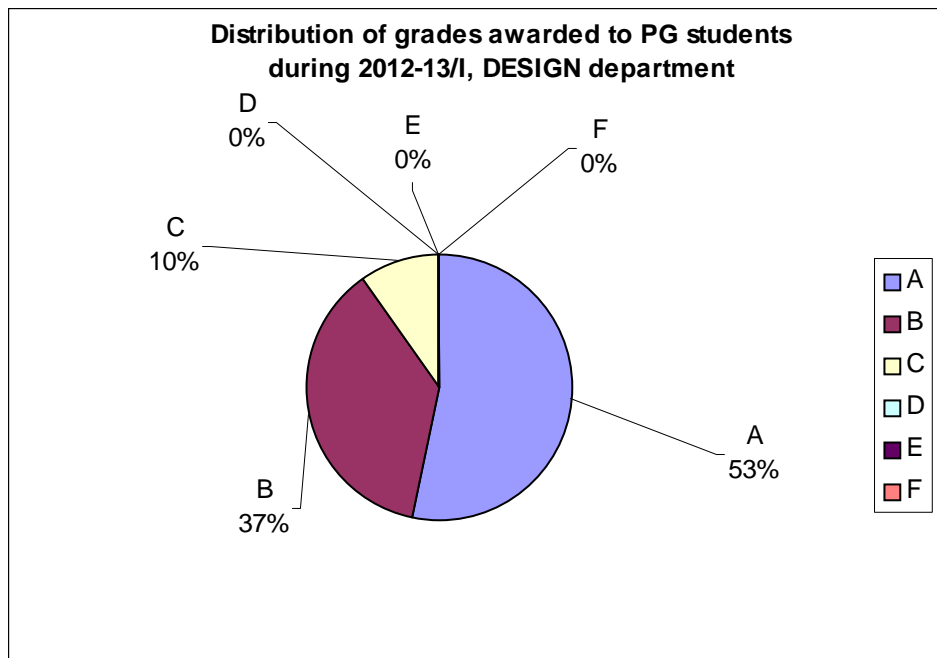


Figure 30

Data for course numbers: DES601, DES602, DES633, DES689

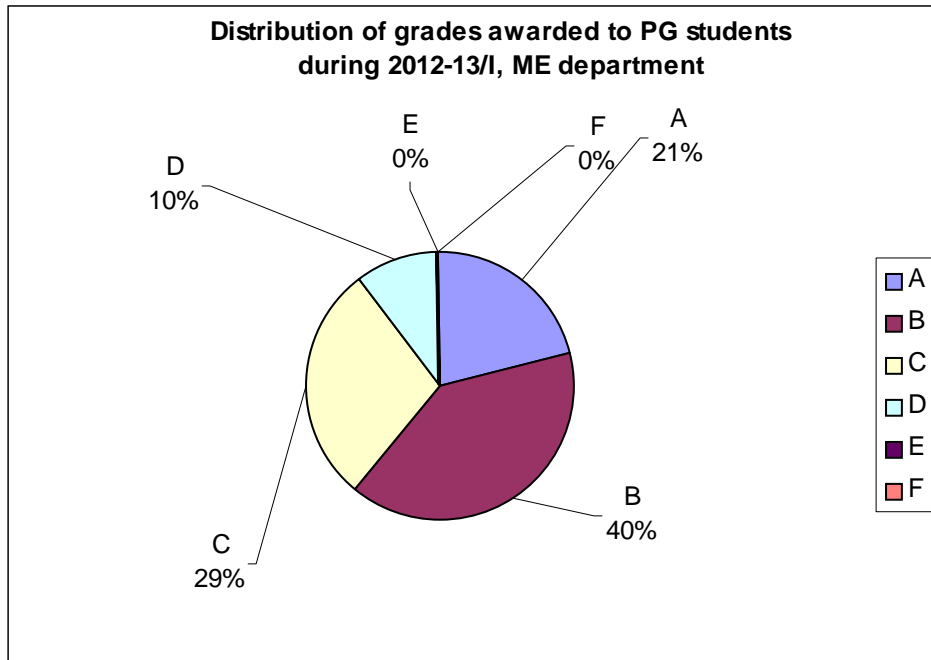


Figure 31

Data for course numbers: ME621, ME623, ME625, ME630, ME631, ME641, ME661, ME662, ME663, ME671, ME681, ME685, ME690, ME727, ME757, NT602, NT611, NT621, SE381

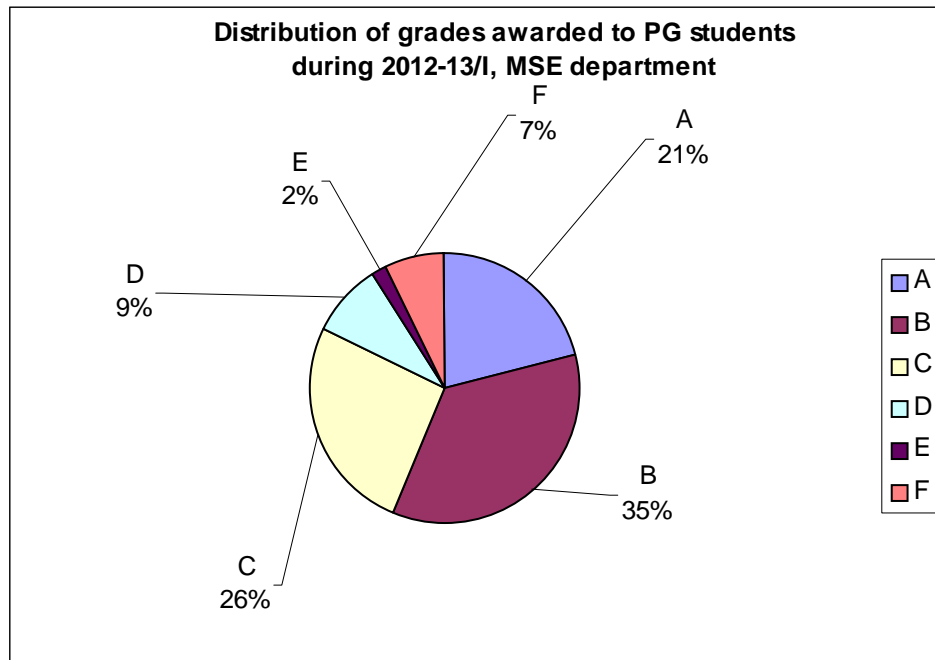


Figure 32

Data for course numbers: MSE615, MSE616, MSE617, MSE626N, MSE650, MSE653, MSE664, MSE689, MSE694

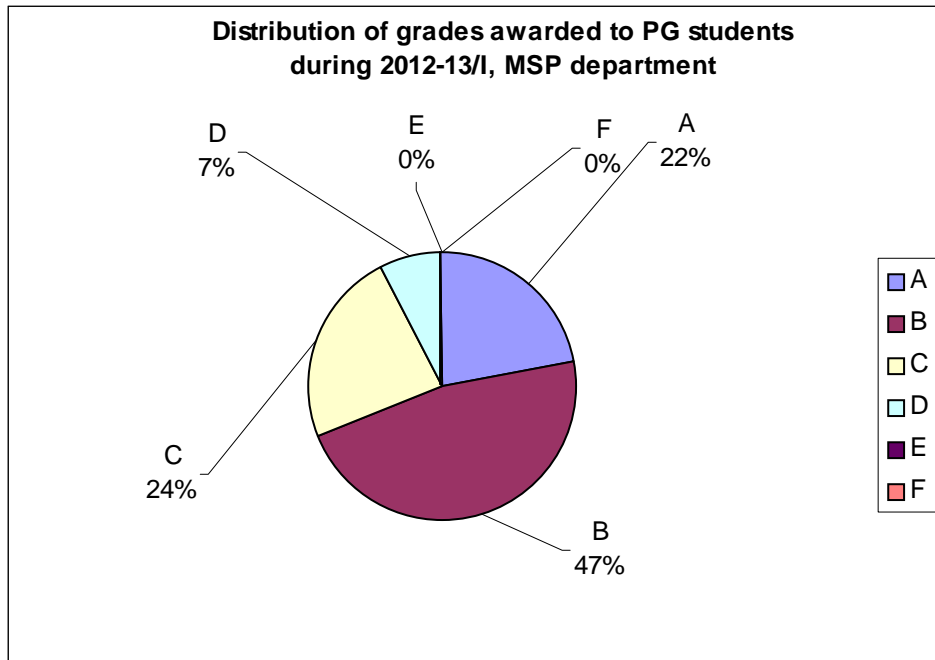


Figure 33

Data for course numbers: MS601, MS602, MS603

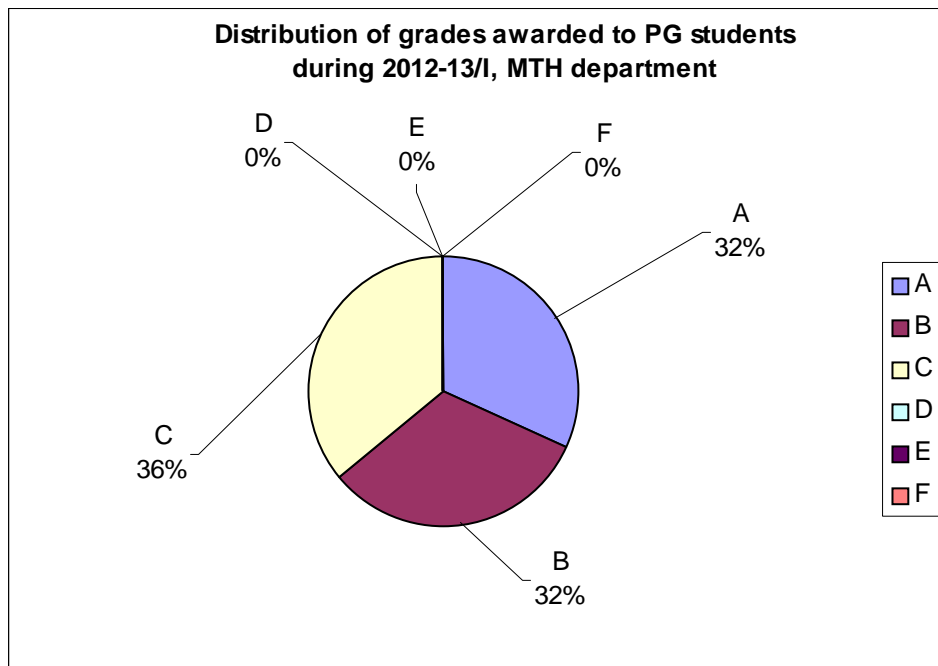


Figure 34

Data for course numbers: MTH612, MTH620, MTH685, MTH691, MTH692, MTH715, MTH753, MTH754

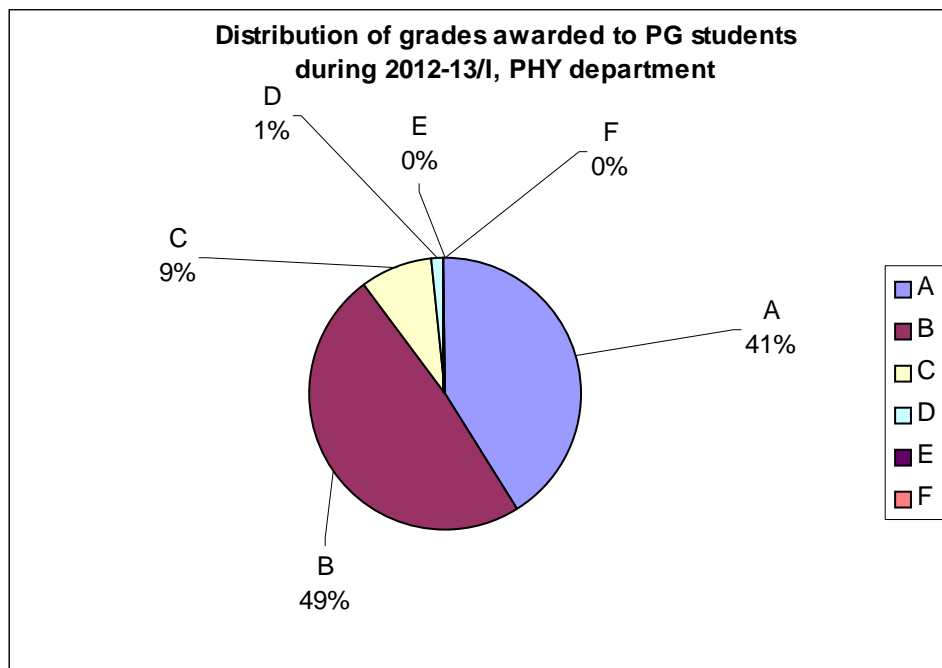


Figure 35

Data for course numbers: PHY601, PHY603, PHY617, PHY659, PHY672, PHY681, PHY682, PHY690A, PHY690P, PHY695

Annexure – 1

Average grade awarded to students across the Institute in 2012-13/I

Category of Students	% of Students with different grades						Average Grade (out of 10.0)
	A	B	C	D	E	F	
All, UG students (including core courses)	22	34	26	14	1	3	7.1
UG students, in Core courses only	19	33	26	17	2	3	6.8
All PG Students	30	44	20	5	0	1	7.8