

STATISTICAL REPORT
OF
GRADES AWARDED
2011-12/II



JUNE-2012

Office of the Dean of Academic Affairs
Indian Institute of Technology Kanpur

LIST OF CONTENTS

S.NO	CONTENTS	PageNo
1.	Figure 1: Distribution of all grades awarded to UG and PG students across the institute.	1
2.	Figure 2: Distribution of all grades awarded to UG students	1
3.	Figure 3: Distribution of all Core courses grades awarded to UG students	2
4.	Figure 4: Distribution of all grades awarded to PG students	2
5.	Figure 5: Distribution of all grades awarded to UG students	3
6.	Figure 6: Distribution of all grades awarded to PG students	4
7.	Figure 7: AE department distribution of grades awarded to UG students	5
8.	Figure 8: BSBE department distribution of grades awarded to UG students	5
9.	Figure 9: CE department distribution of grades awarded to UG students	6
10.	Figure 10: CHE department distribution of grades awarded to UG students	6
11.	Figure 11: CHM department distribution of grades awarded to UG students	7
12.	Figure 12: CSE department distribution of grades awarded to UG students	7
13.	Figure 13: EE department distribution of grades awarded to UG students	8
14.	Figure 14: HSS department distribution of grades awarded to UG students	8
15.	Figure 15: IME department distribution of grades awarded to UG students	9
16.	Figure 16: Design department distribution of grades awarded to UG students	9
17.	Figure 17: ME department distribution of grades awarded to UG students	10
18.	Figure 18: MSE department distribution of grades awarded to UG students	10
19.	Figure 19: MTH department distribution of grades awarded to UG students	11
20.	Figure 20: PHY department distribution of grades awarded to UG students	11
21.	Figure 21: AE department distribution of grades awarded to PG students	12
22.	Figure 22: BSBE department distribution of grades awarded to PG students	12
23.	Figure 23: CE department distribution of grades awarded to PG students	13
24.	Figure 24: CHE department distribution of grades awarded to PG students	13
25.	Figure 25: CHM department distribution of grades awarded to PG students	14
26.	Figure 26: CSE department distribution of grades awarded to PG students	14
27.	Figure 27: EE department distribution of grades awarded to PG students	15
28.	Figure 28: HSS department distribution of grades awarded to PG students	15
29.	Figure 29: IME department distribution of grades awarded to PG students	16
30.	Figure 30: Design department distribution of grades awarded to PG students	16
31.	Figure 31: ME department distribution of grades awarded to PG students	17
32.	Figure 32: MSE department distribution of grades awarded to PG students	17
33.	Figure 33: MSP department distribution of grades awarded to PG students	18
34.	Figure 34: MTH department distribution of grades awarded to PG students	18
35.	Figure 35: PHY department distribution of grades awarded to PG students	19

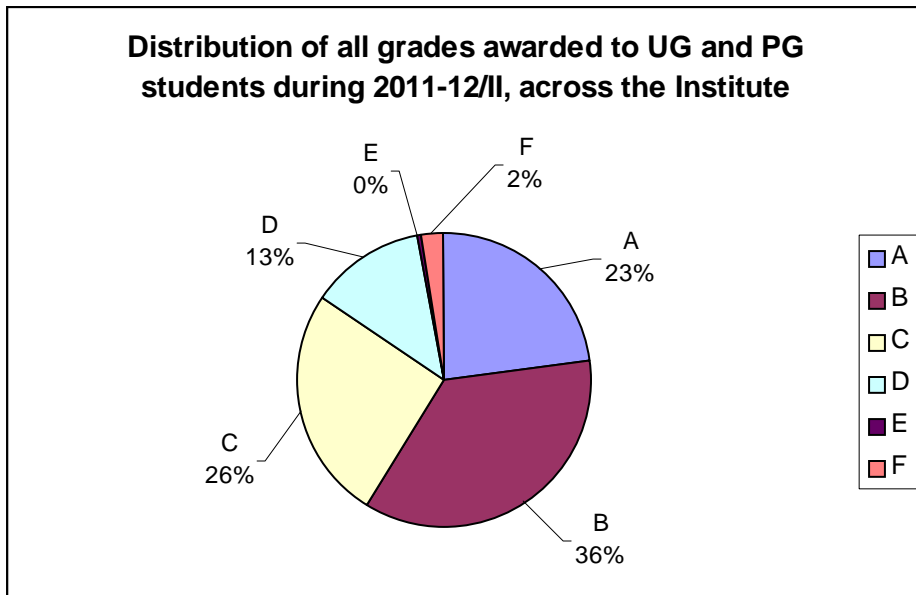


Figure 1

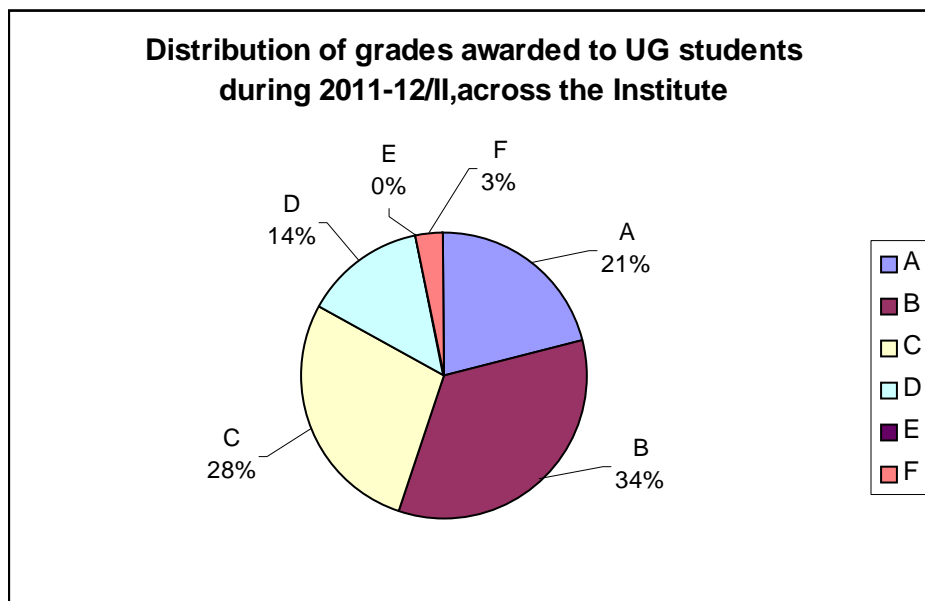


Figure 2

(UG students) include all students who have a 5 digit roll number
(All B.Tech, Msc-2yr, BT part of BT-MT)

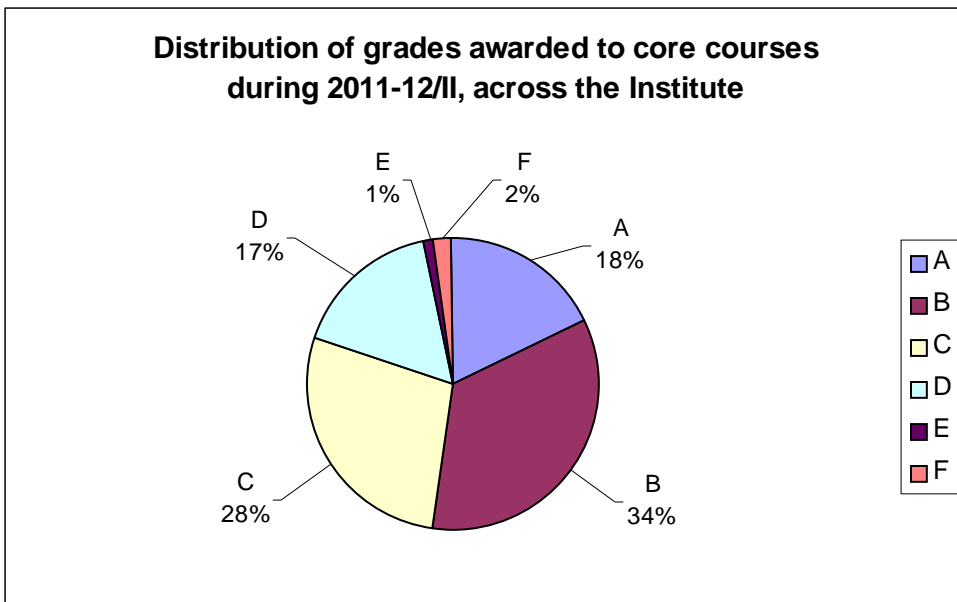


Figure 3:

Data is for Core course numbers: CHM101A, CHM101N, CHM102A, CHM201R, ESC101A, LIF101A, MTH101A, MTH101R, MTH102A, MTH102R, PHY101A, PHY102A, PHY103A, PHY103R, TA101A, TA201N, ART102, ART105, ECO101, ECO101A, ENG123, ENG124, PHI141, PHI142, PSY151, SOC171, ESO202, ESO204, ESO209, ESO210, ESO212, ESO214, ESO218

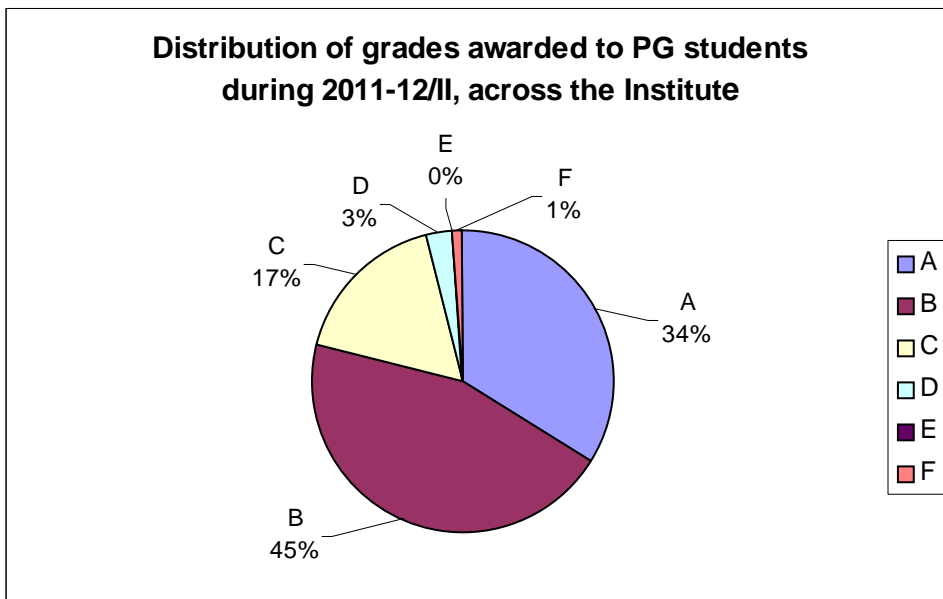


Figure 4:

PG students include all students (All M.Tech, MT Part of BT-MT, PhD, MBA, M.Des)

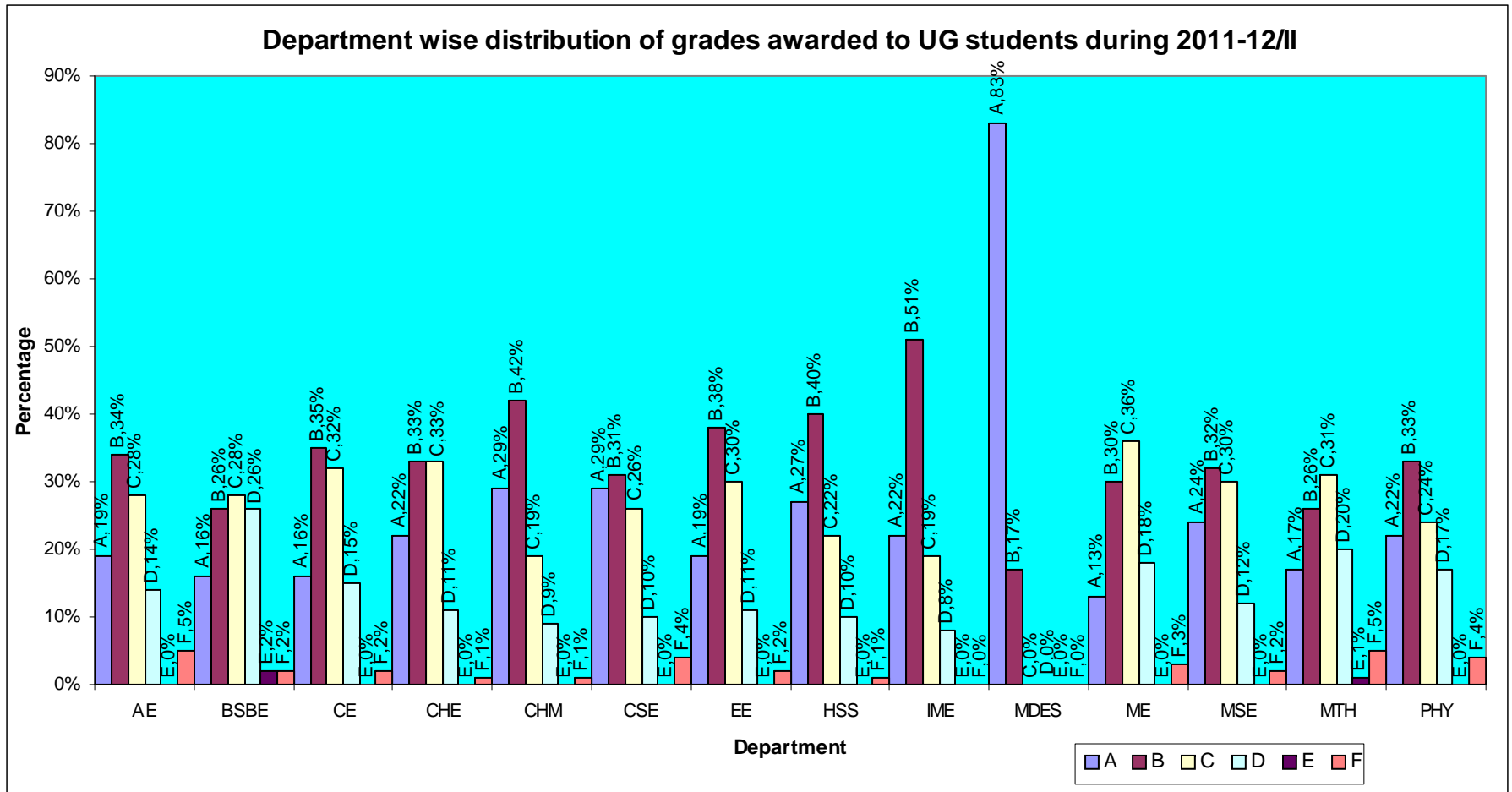


Figure 5

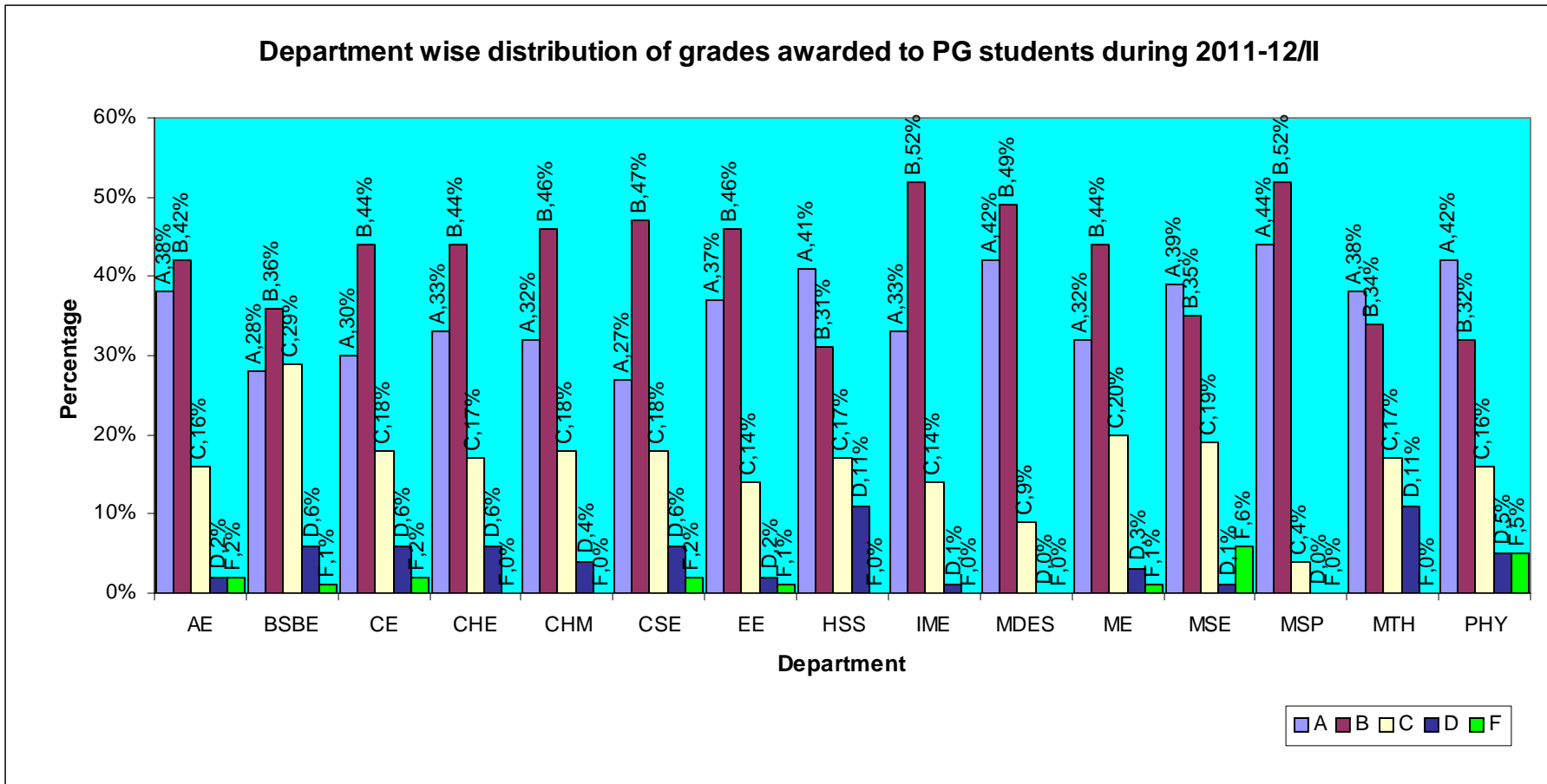


Figure 6: (In the entire institute no 'E' grade was awarded)

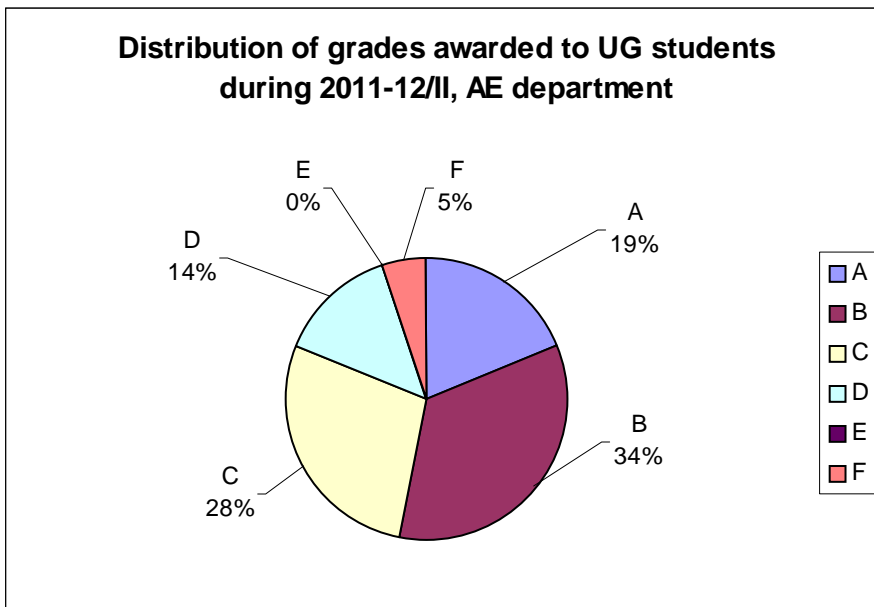


Figure 7

Data is for course numbers: AE211, AE232, AE312, AE322, AE332, AE342, AE422, AE462, AE472, AE615, AE625, AE641, AE660, AE672, AE675, AE678, AE698, AE753, ESO202

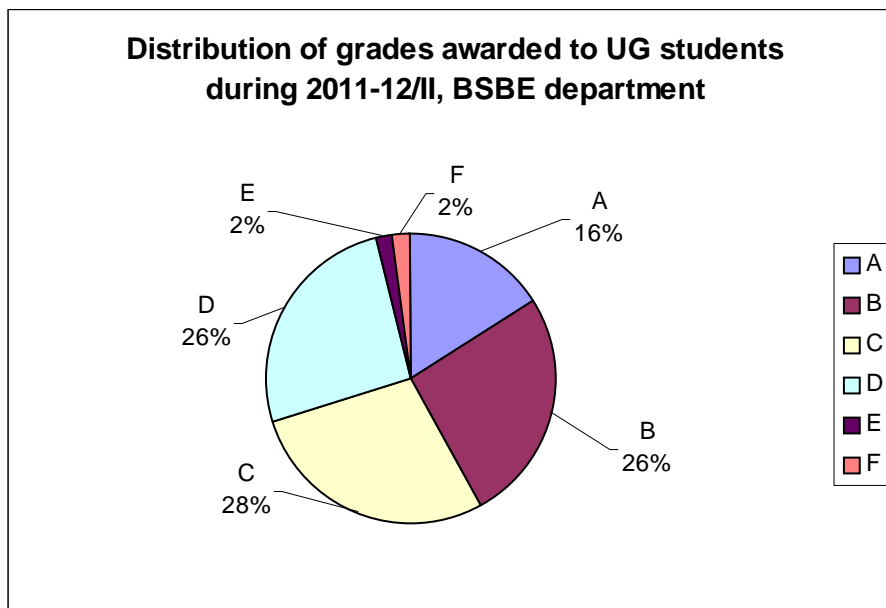


Figure 8

Data is for course numbers: BSE216, BSE292, BSE314, BSE392, BSE499, BSE631, BSE634, BSE636, BSE652, BSE653, BSE680, LIF101A

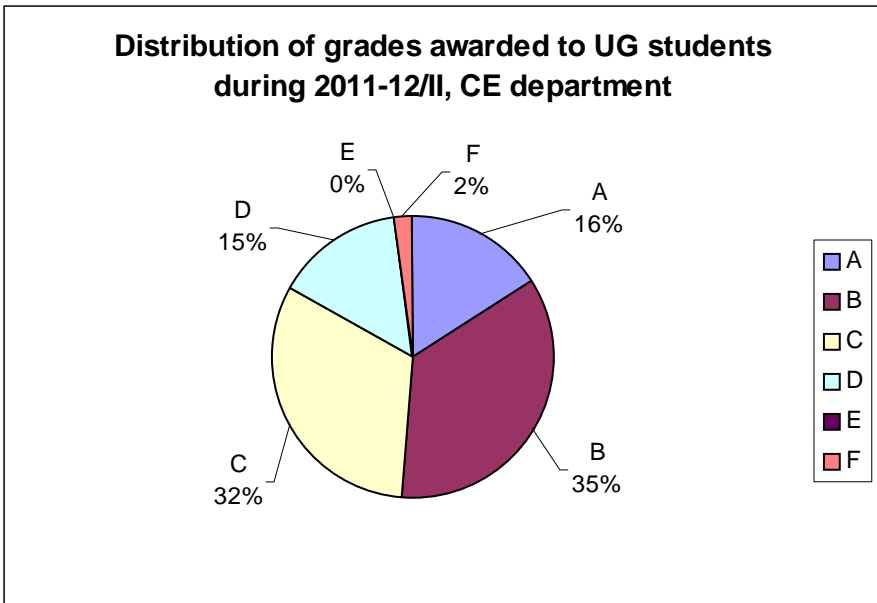


Figure 9

Data is for course numbers: CE222, CE242, CE312N, CE322, CE332, CE362, CE373, CE382, CE491, CE492, CE616, CE622N, CE625, CE628, CE629, CE632N, CE635, CE641, CE674, CE676, EEM609, EEM613, EEM701, ESO218, TA101A

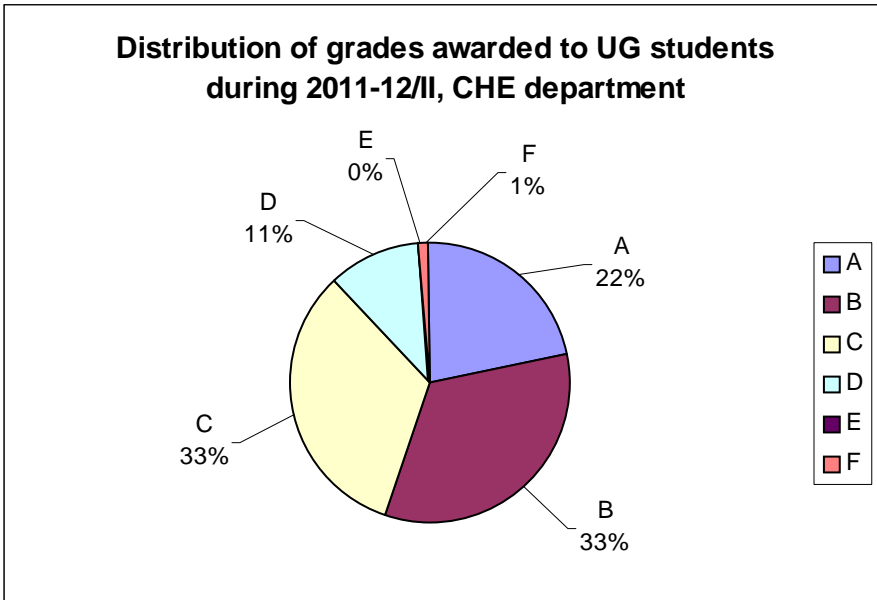


Figure 10

Data is for course numbers: CHE211, CHE221, CHE313, CHE362, CHE381, CHE391, CHE452, CHE453, CHE463, CHE495, CHE496, CHE618, CHE622, CHE631, CHE632, CHE670, ESO212

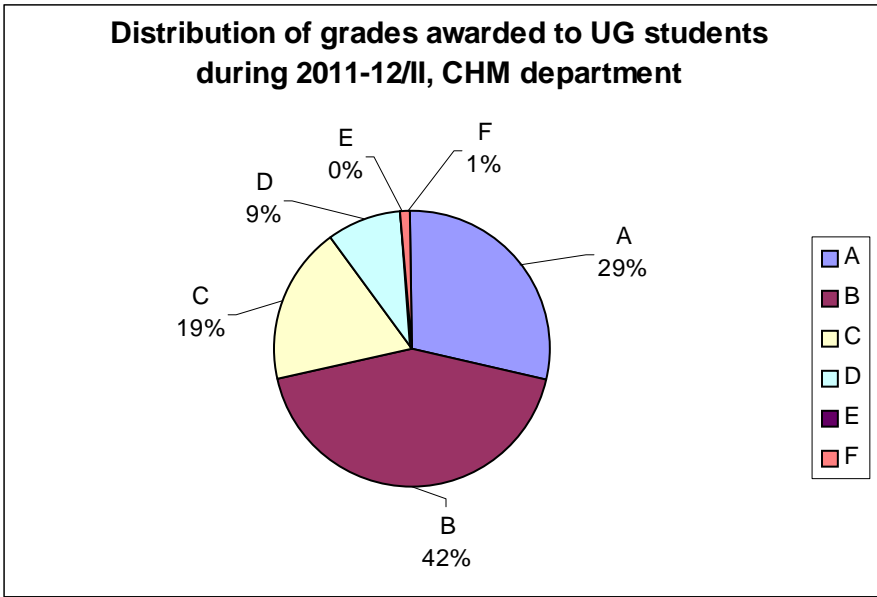


Figure 11

Data is for course numbers: CHM101A, CHM102A, CHM201R, CHM222, CHM302, CHM341, CHM343, CHM402, CHM404, CHM422, CHM442, CHM443, CHM481, CHM612, CHM631, CHM636, CHM650, CHM654, CHM684, CHM700, CHM700, SE331

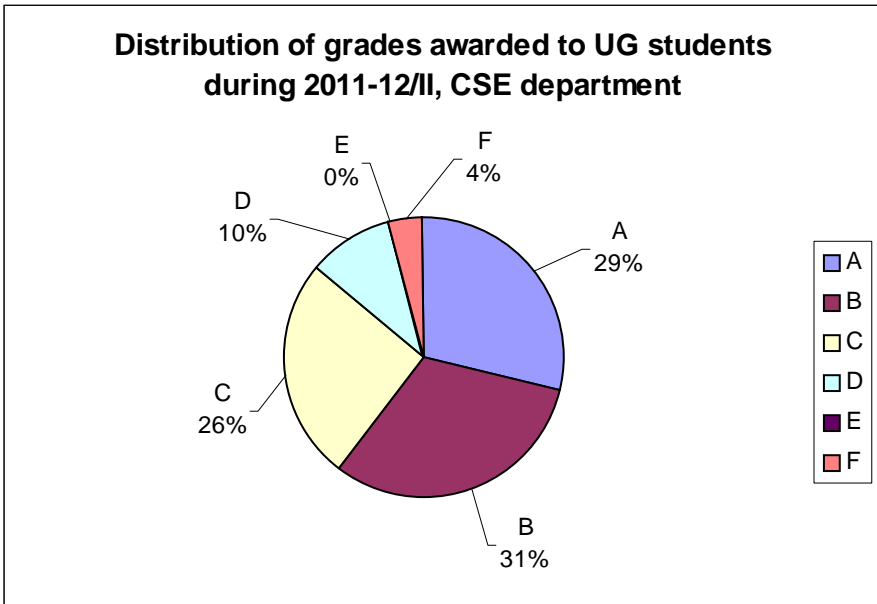


Figure 12

Data is for course numbers: CS201, CS315, CS335, CS345, CS355, CS365, CS397, CS422, CS497, CS498, CS499, CS618, CS625, CS629, CS634, CS639, CS640, CS644, CS646, CS663, CS687, CS718, CS738, CS745, CS785, ESC101A

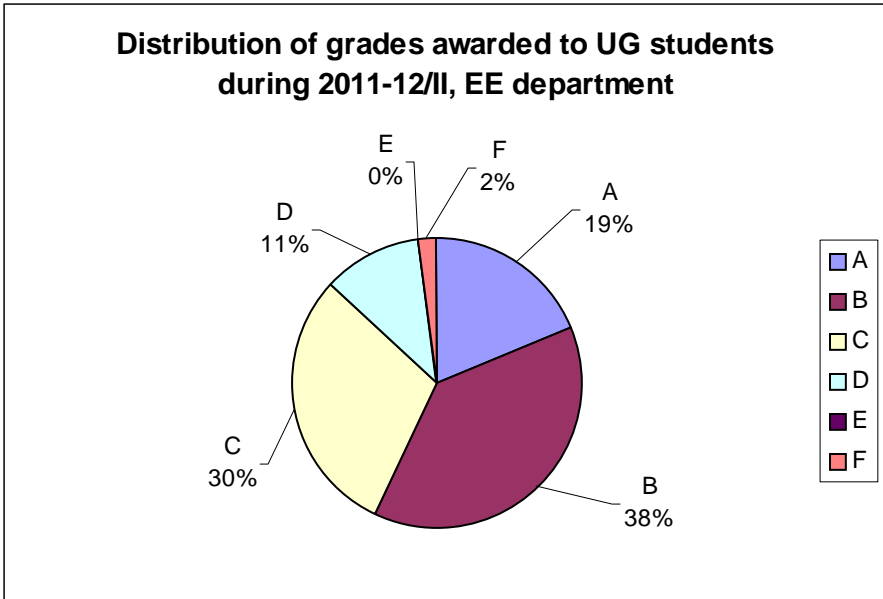


Figure 13

Data is for course numbers: EE210, EE250, EE301, EE311, EE321, EE340, EE360, EE381, EE491, EE492, EE611, EE618, EE619, EE622, EE623, EE643, EE648, EE649, EE659, EE662, EE665, EE670, EE671, EE698A, EE698Z, ESO210

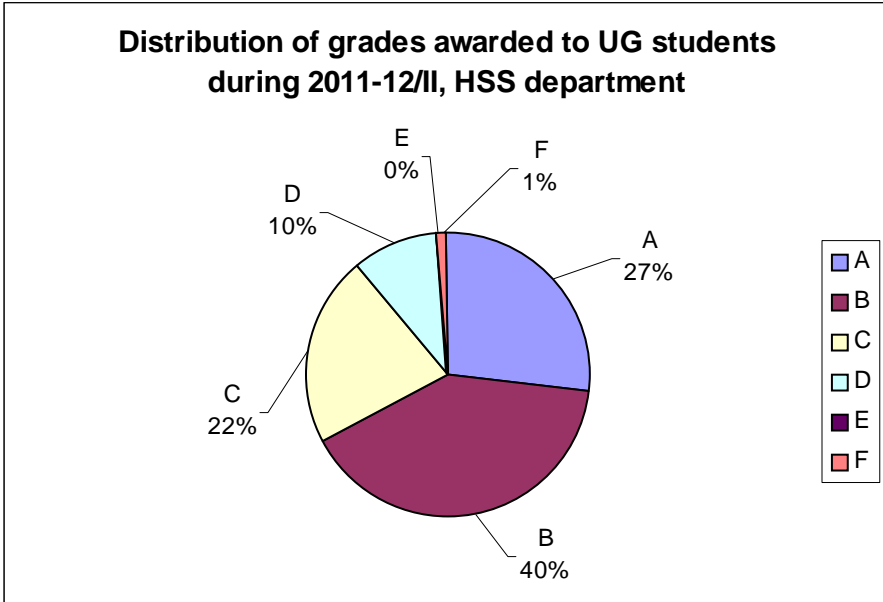


Figure 14

Data is for course numbers: ART102, ART105, ART402, ECO101, ECO202, ECO231, ECO303, ECO312, ECO332, ECO341, ECO404, ECO423, ECO424, ECO444, ECO502, ECO599, ENG123, ENG124, ENG448, ENG451, PHI141, PHI142, PHI447, PHI757, PHI784, PSY151, PSY451, PSY454, PSY458, PSY468, SOC171, SOC473, SOC477, SOC486

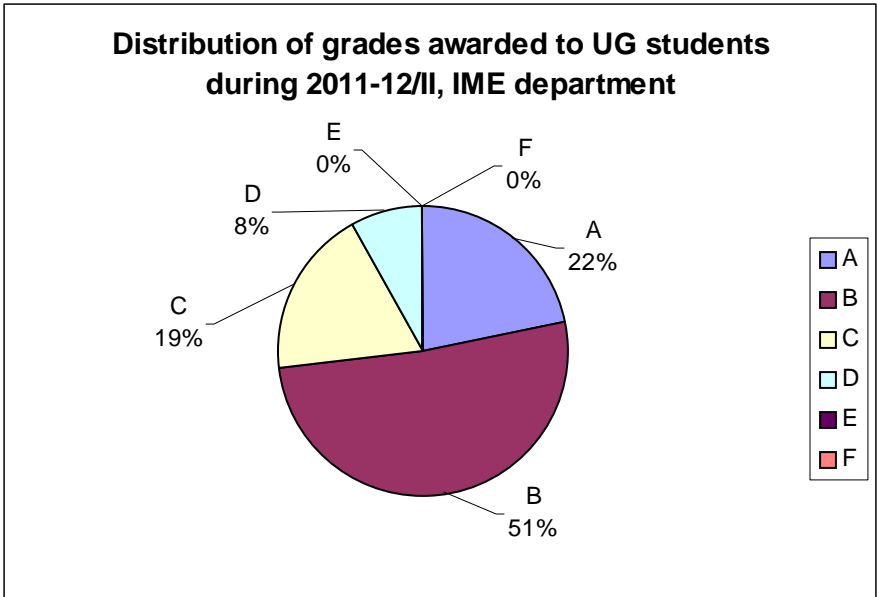


Figure 15

Data is for course numbers: IME624, IME671, MBA611, MBA626, MBA635, MBA647, MBA649, MBA665

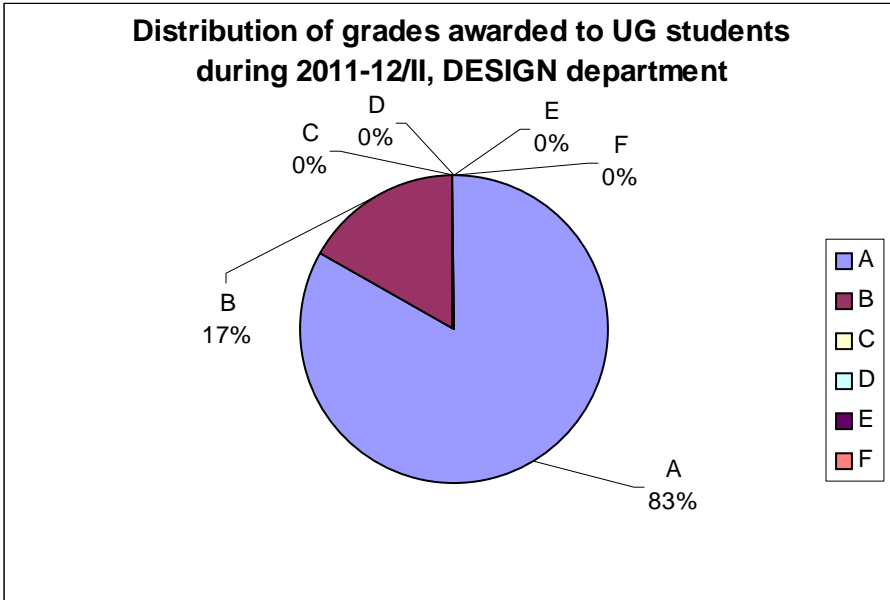


Figure 16

Data is for course numbers: DES623

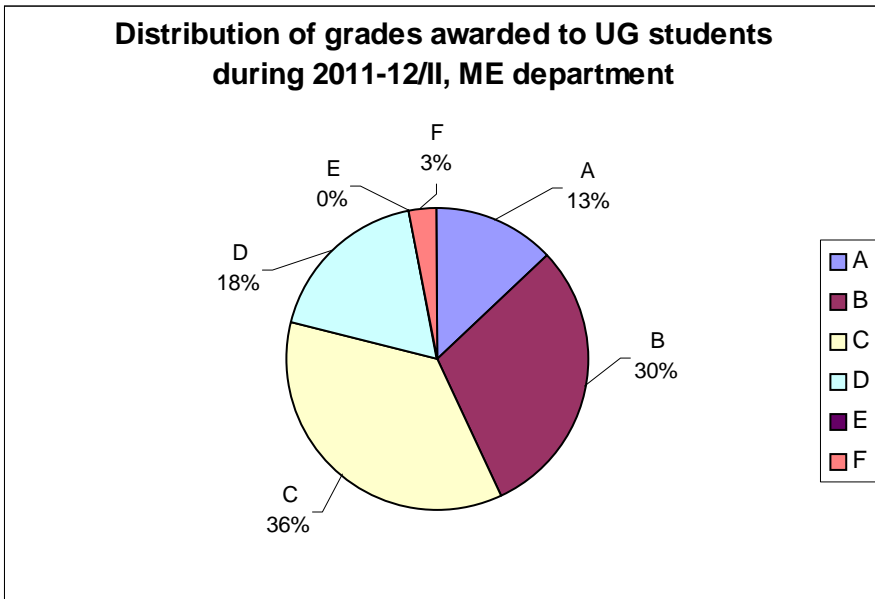


Figure 17

Data is for course numbers: ESO204, ME231, ME251, ME301, ME351, ME353, ME371, ME451, ME452, ME461, ME471N, ME623, ME630, ME642, ME654, ME689, ME721, ME742, ME751, ME752, ME756, ME759, ME761, ME763, ME765, ME774, TA201N, NT614, NT651

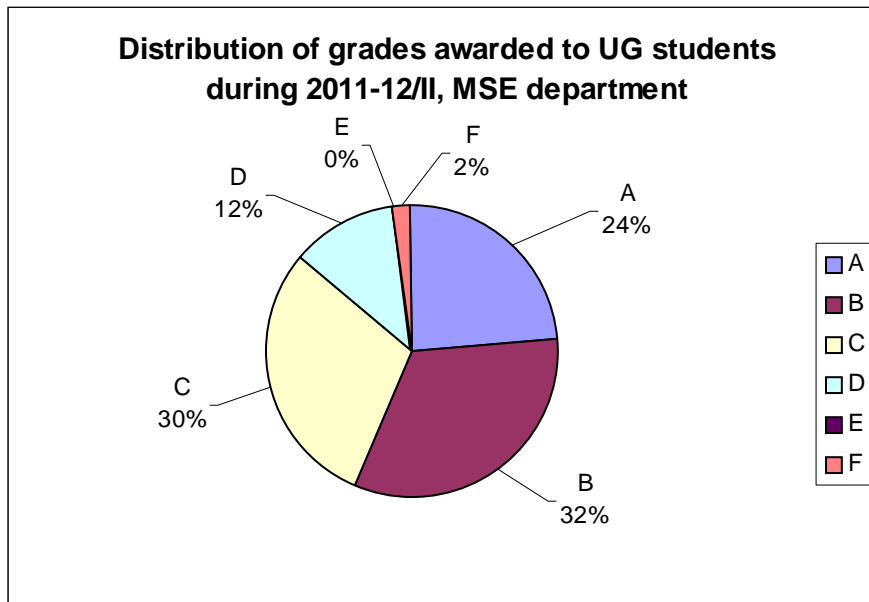


Figure 18

Data is for course numbers: MSE210, MSE250, MSE331, MSE340, MSE350, MSE370, MSE425, MSE601, MSE648, MSE674, MSE688, MSE693, MSE695, ESO214, MME441, MME480, MME482, MME498, MME499

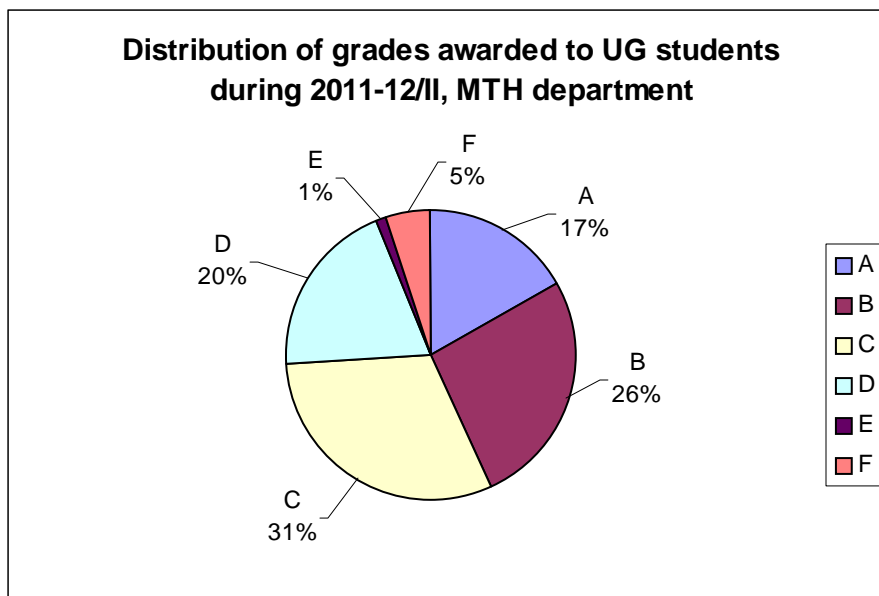


Figure 19

Data is for course numbers: ESO209, MTH101A, MTH101R, MTH102A, MTH102R, MTH202, MTH204, MTH302, MTH304, MTH306, MTH308, MTH404, MTH411, MTH412, MTH416, MTH418, MTH421, MTH424, MTH511, MTH514, MTH516, MTH520, MTH599, MTH611, MTH624, MTH634, MTH648, MTH682, MTH698, MTH720, MTH729, MTH759, SE359

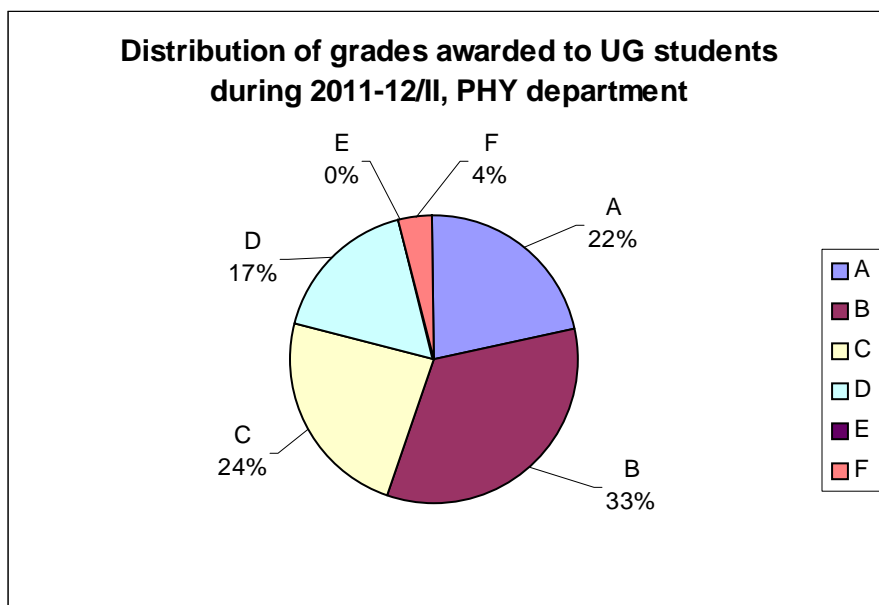


Figure 20

Data is for course numbers: PHY101A, PHY102A, PHY103A, PHY103R, PHY204, PHY210, PHY218, PHY303, PHY412, PHY422, PHY432, PHY461, PHY462, PHY473, PHY500, PHY502N, PHY524, PHY553, PHY566, PHY568, PHY570, PHY571, PHY590, PHY599, PHY602, PHY610, PHY616, PHY632, PHY634, PHY645, PHY680, PHY692, PHY781, SE301, SE309, SE316, SE321

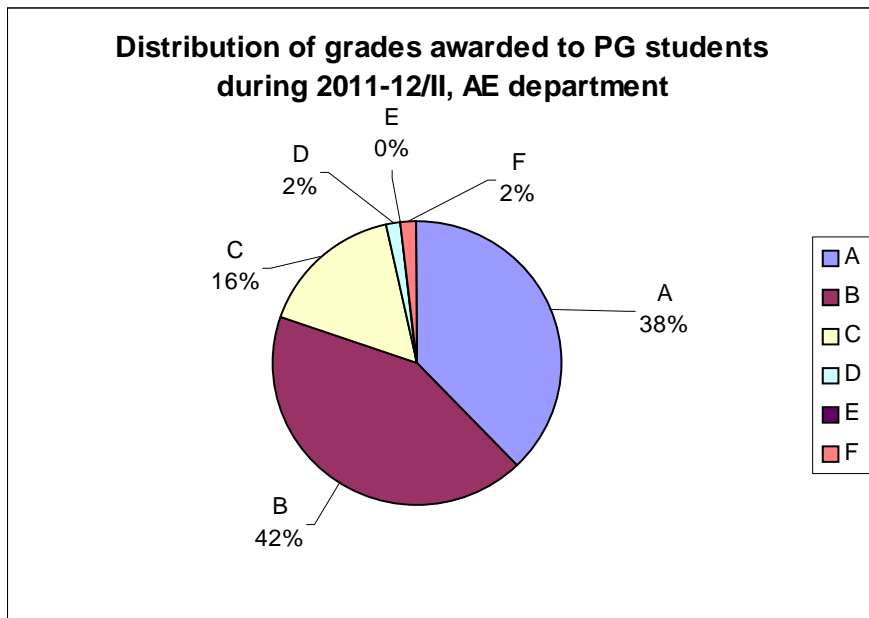


Figure 21

Data is for course numbers: AE211, AE232, AE342, AE422, AE462, AE612, AE615, AE625, AE641, AE648, AE660, AE672, AE675, AE678, AE683, AE687, AE698, AE753

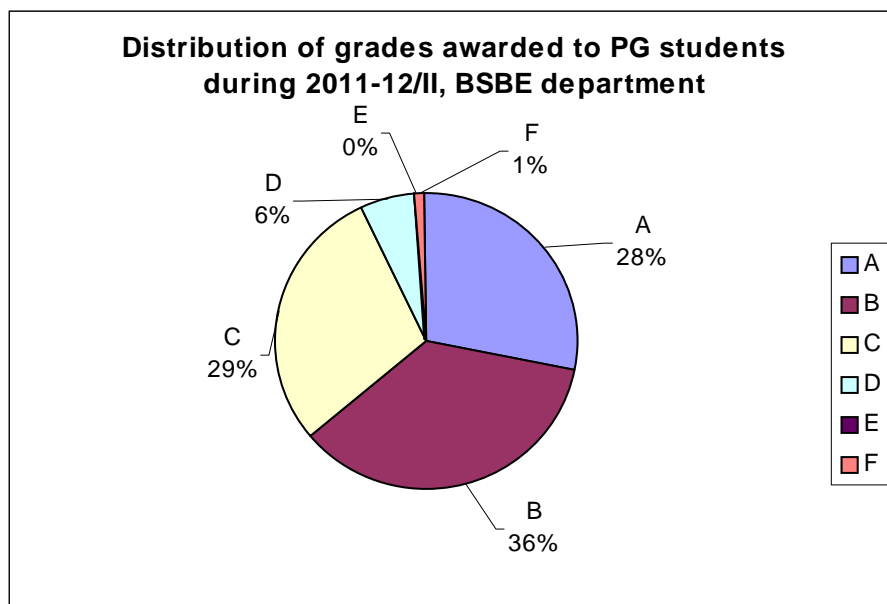


Figure 22

Data is for course numbers: BSE631, BSE633, BSE634, BSE636, BSE638, BSE641, BSE652, BSE653, BSE671, BSE680, BSE681

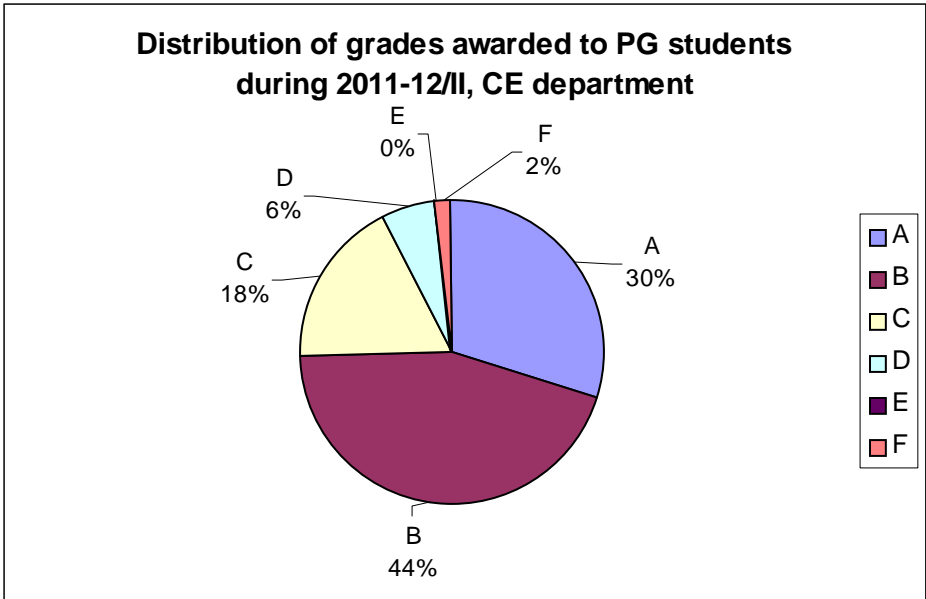


Figure 23

Data is for course numbers: CE362, CE373, CE613, CE614, CE616, CE622N, CE625, CE628, CE629, CE632N, CE634N, CE635, CE641, CE647, CE648, CE673N, CE674, CE676, CE682, CE690, EEM604, EEM609, EEM613, EEM701, ESO218, EEM702

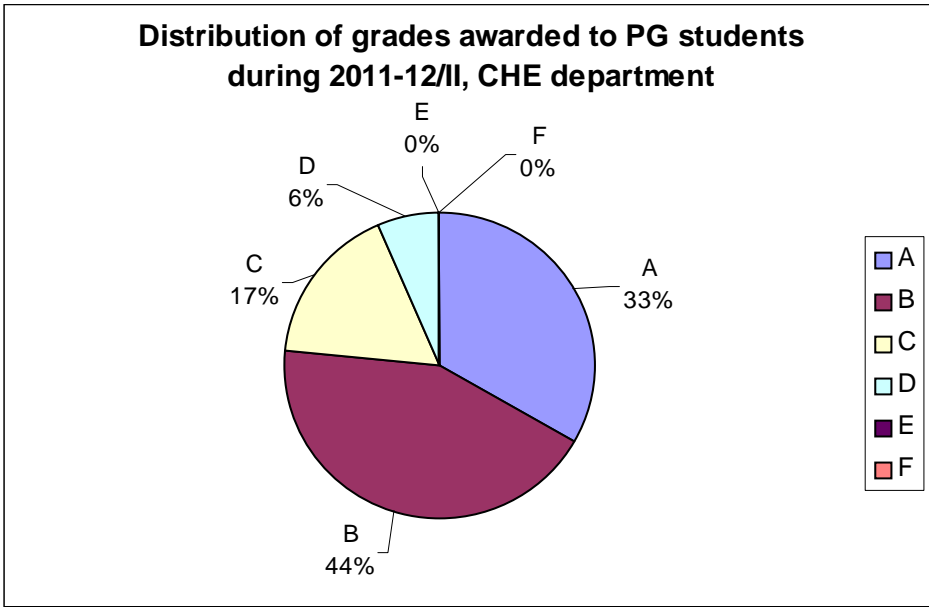


Figure 24

Data is for course numbers: CHE453, CHE463, CHE601, CHE602, CHE618, CHE622, CHE623, CHE631, CHE632, CHE641, CHE670, CHE676, CHE688

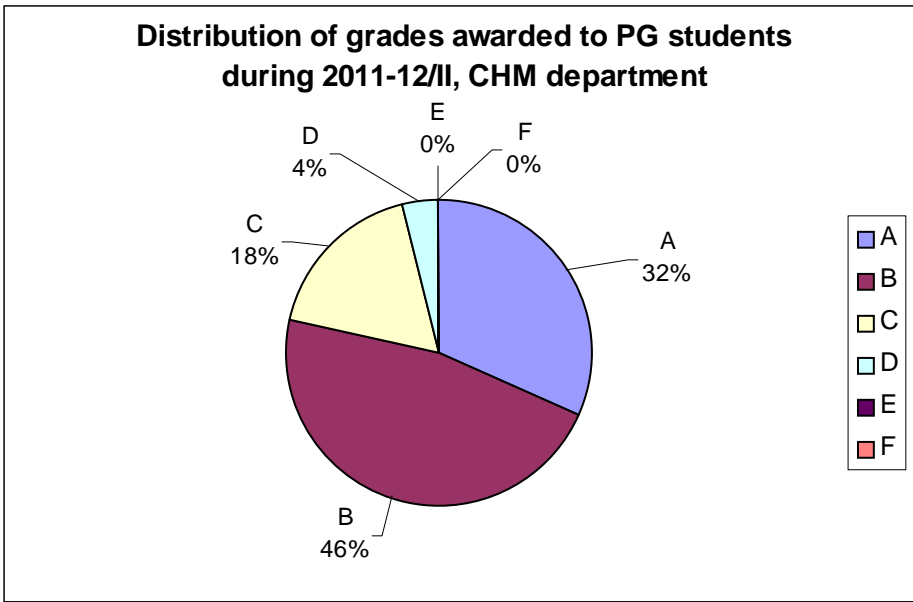


Figure 25

Data is for course numbers: CHM612, CHM631, CHM636, CHM650, CHM654, CHM684, SE331

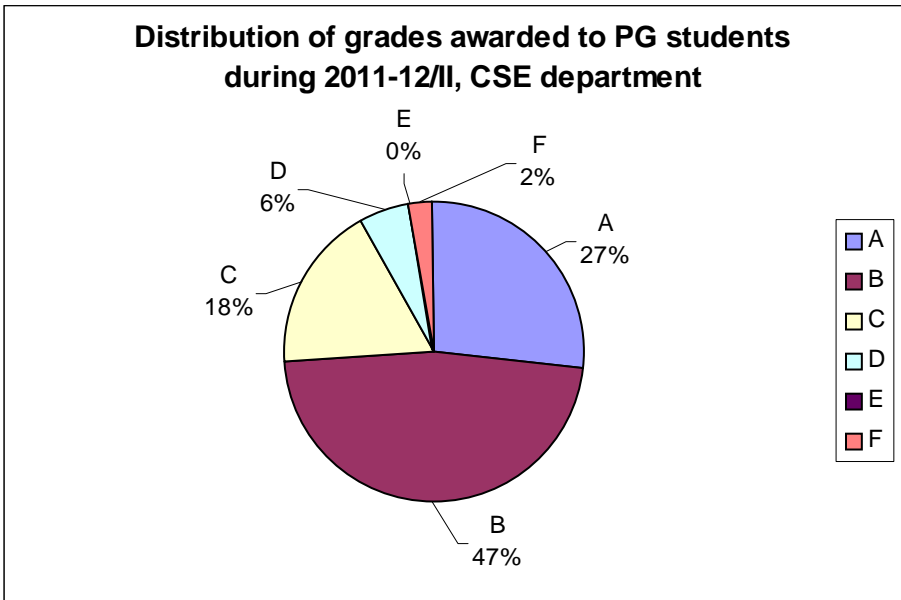


Figure 26

Data is for course numbers: CS618, CS625, CS629, CS634, CS639, CS640, CS644, CS646, CS663, CS687, CS697, CS718, CS738, CS745, CS785, CS797

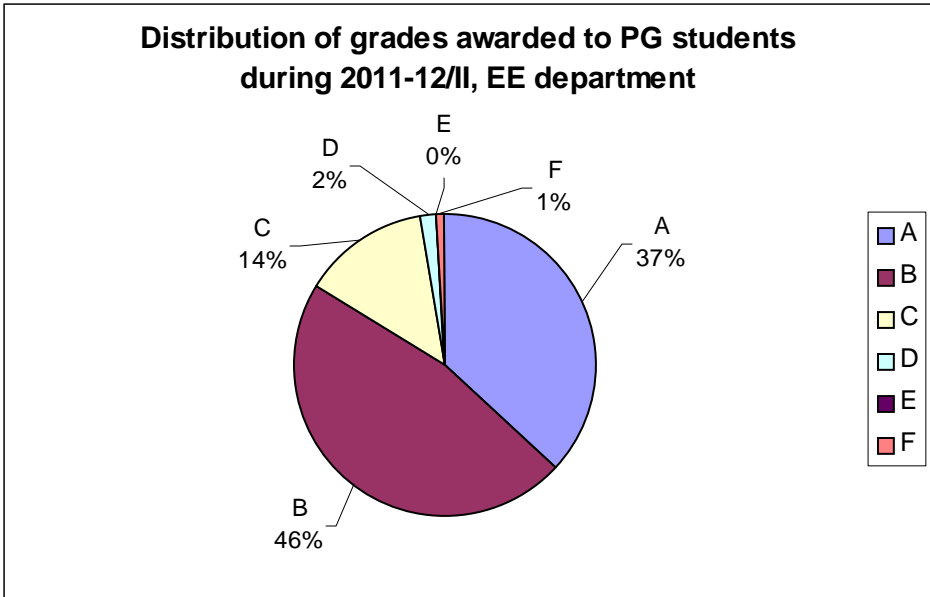


Figure 27

Data is for course numbers: EE600, EE608, EE611, EE618, EE619, EE622, EE623, EE628, EE633, EE635, EE639, EE642, EE643, EE646, EE648, EE649, EE659, EE662, EE665, EE670, EE671, EE698A, EE698Z

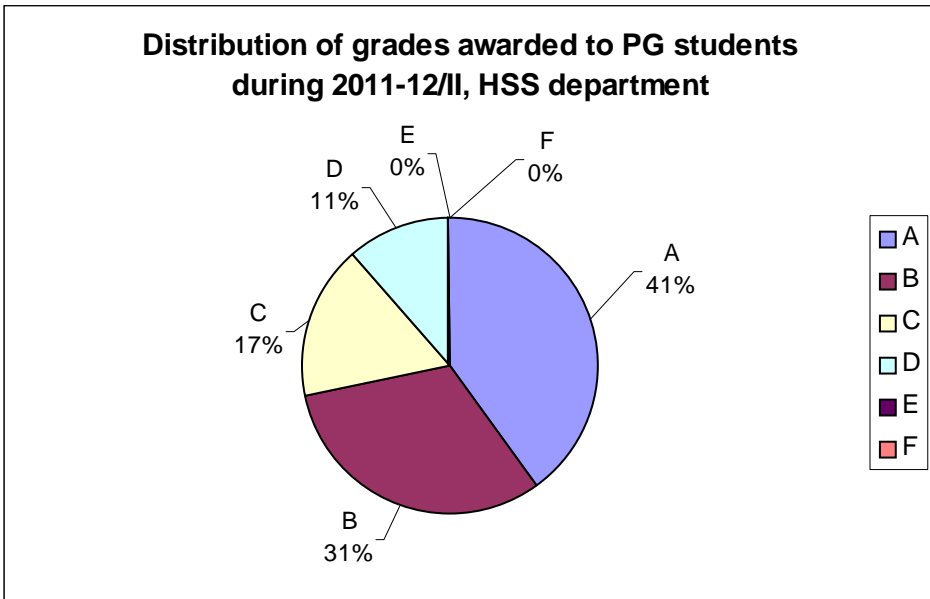


Figure 28

Data is for course numbers: ART402, ECO735, ECO737, ECO747, ECO750, ENG448, PHI447, PHI752, PHI753, PHI757, PSY451, PSY458, PSY468, PSY775, PSY776, PSY787, PSY794, SOC473, SOC477, SOC721, SOC745

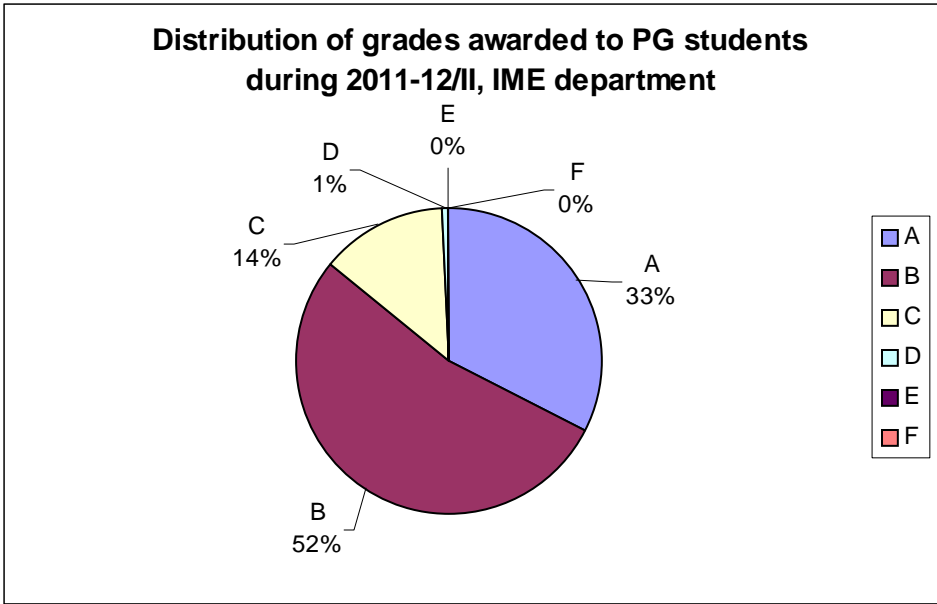


Figure 29

Data is for course numbers: IME624, IME625, IME641, IME671, MBA607, MBA611, MBA621, MBA626, MBA633, MBA634, MBA635, MBA637, MBA645, MBA647, MBA649, MBA661, MBA665, MBA671, MBA677, MBA699

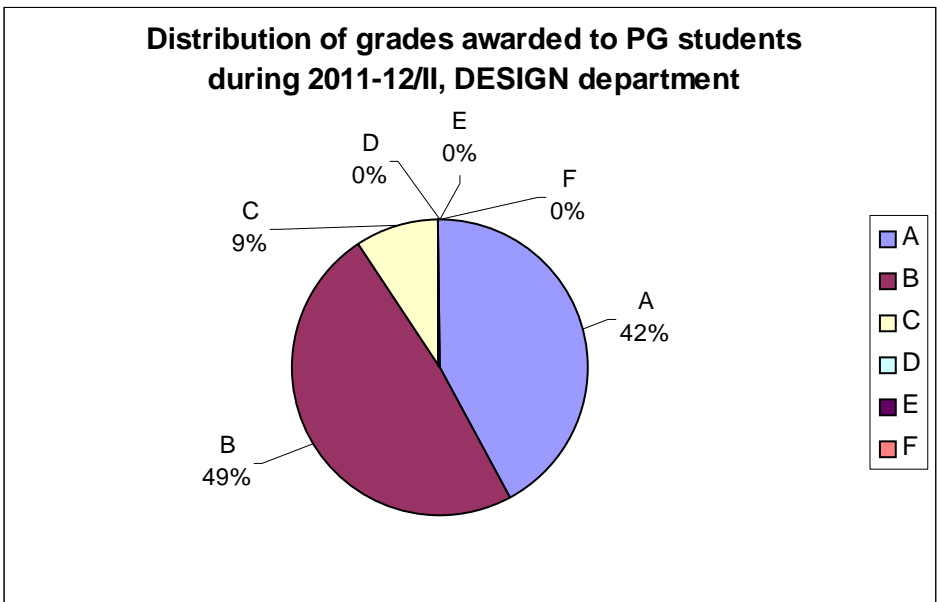


Figure 30

Data is for course numbers: DES603, DES623, DES630, DES682, DES698

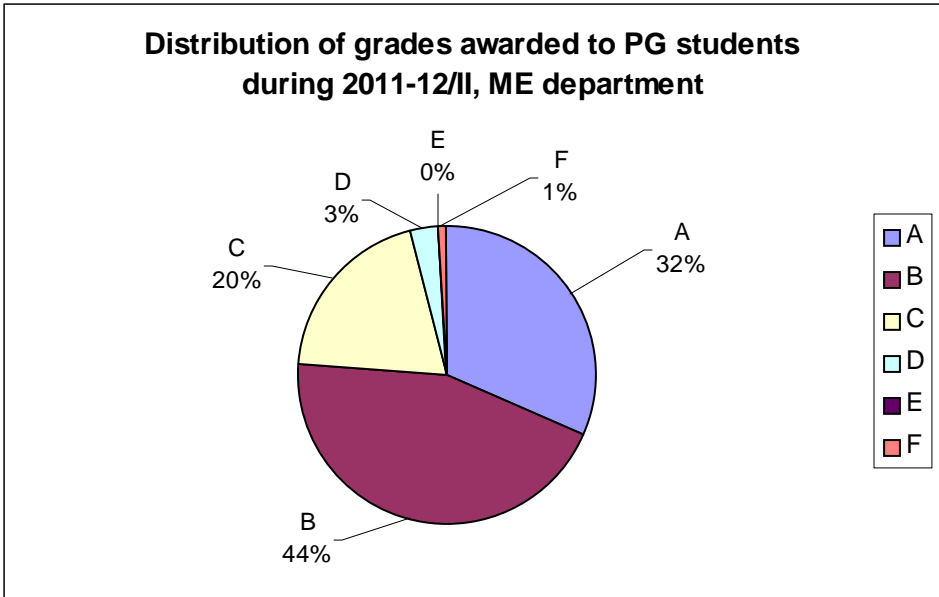


Figure 31

Data is for course numbers: ME461, ME622, ME623, ME624, ME626, ME630, ME642, ME647, ME649, ME654, ME673, ME689, ME721, ME723, ME728, ME742, ME751, ME752, ME756, ME759, ME761, ME763, ME765, ME774, ME781, NT614, NT621, NT651, NT661

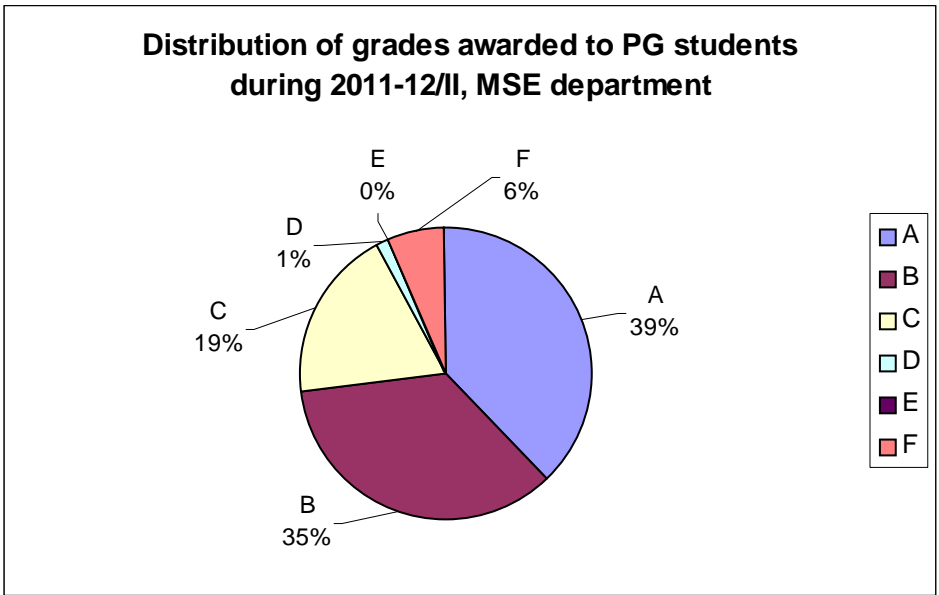


Figure 32

Data is for course numbers: MME480, MME482, MSE340, MSE350, MSE425, MSE601, MSE646, MSE648, MSE674, MSE681, MSE688, MSE693, MSE695

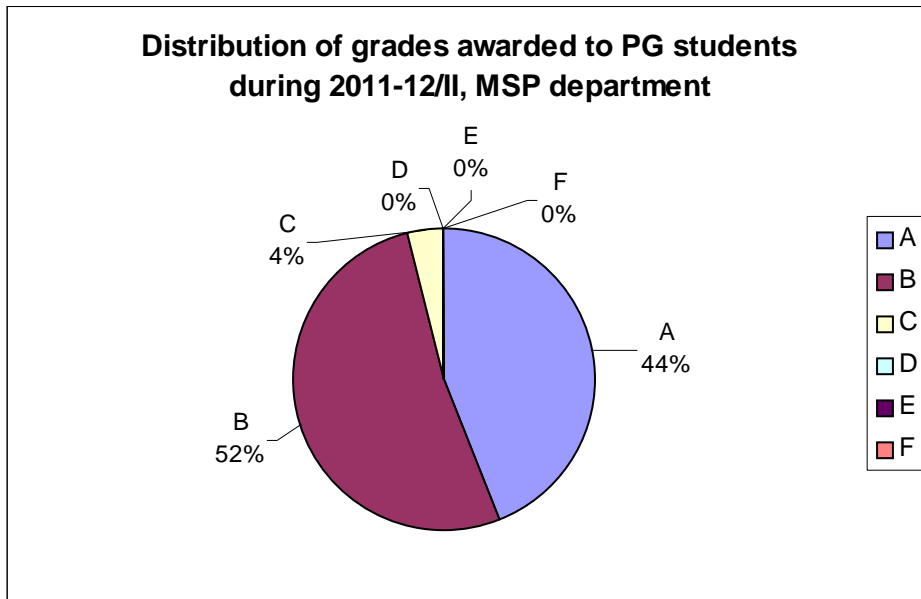


Figure 33
Data is for course numbers: MS604, MS605

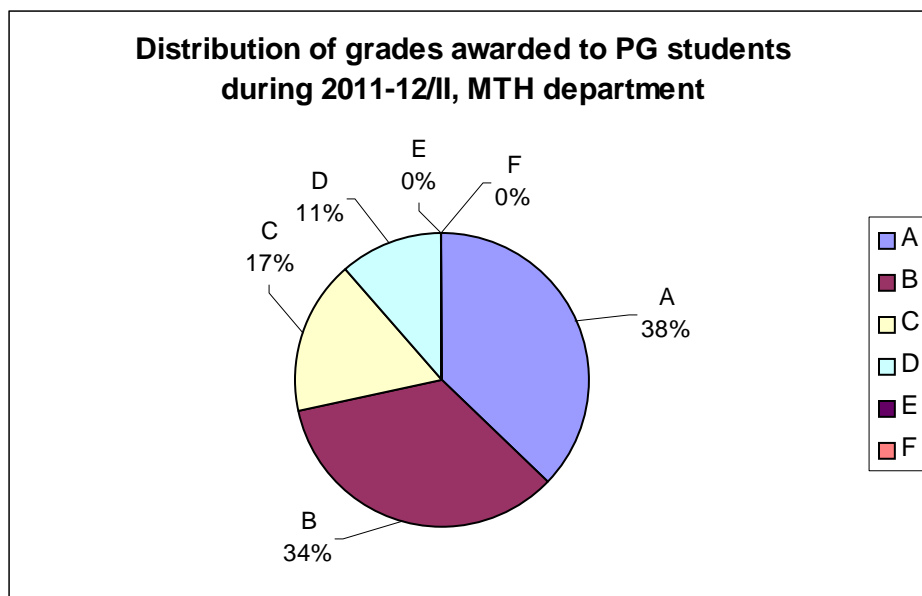


Figure 34
Data is for course numbers: MTH411, MTH611, MTH624, MTH634, MTH682, MTH720, MTH729, MTH751, MTH752, MTH759

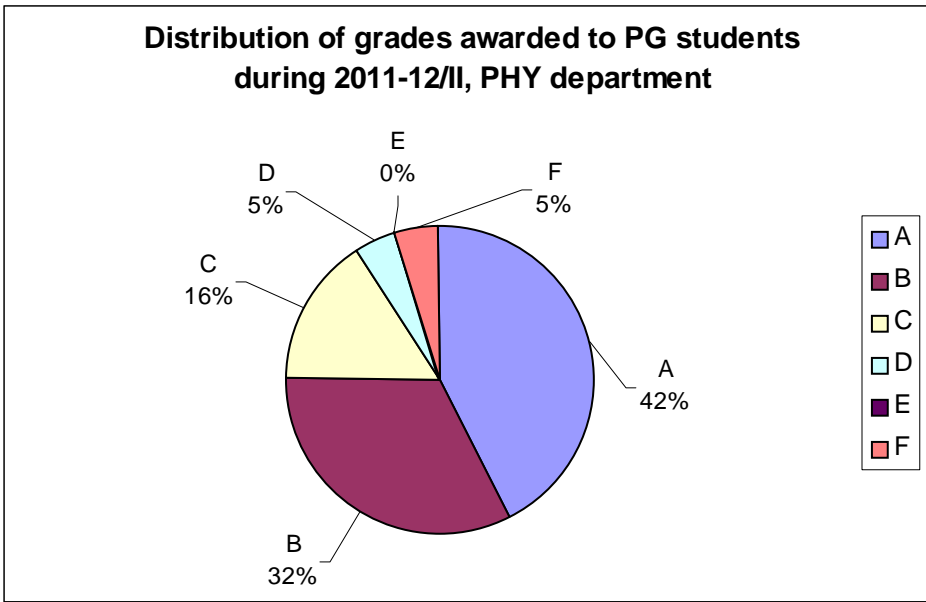


Figure 35

Data is for course numbers: LT611, LT680, PHY599, PHY602, PHY610, PHY616, PHY628, PHY632, PHY634, PHY645, PHY680, PHY692, PHY781

Annexure – 1**Average grade awarded to students across the Institute in 2011-12/II**

Category of Students	% of Students with different grades						Average Grade (out of 10.0)
	A	B	C	D	E	F	
All, UG students (including core courses)	21	34	28	14	0	3	7.1
UG students, in Core courses only	18	34	28	17	1	2	7.0
All PG Students	34	45	17	3	0	1	8.1