

RETROFITTING AND STRENGTHENING QUALITY EVALUATION FROM RIGIDITY VARIATIONS OF A DAMAGED BUILDING

M. N. Farsi¹, J-L Chatelain^{1,2}, B. Guillier^{1,2} and S-A Zermout¹

¹ National Centre of Earthquake Engineering (CGS), Algiers, Algeria

² National Centre of Earthquake Engineering, Algiers, Algeria & Laboratoire de Géophysique Interne et de Tectonophysique (LGIT), Grenoble, France

ABSTRACT:

The rigidity of a six-story shear wall building, damaged by the May 21, 2003 Boumerdes (Algeria) earthquake is evaluated before the event, in its damaged state, and after retrofitting, using the estimation of the frequency and damping factor of the structure. The pre-event parameters are estimated through a numerical analysis, based on the structure drawings complemented by a micro-tremor investigation of an identical non-damaged building located on the same site. The damaged and retrofitted parameters have been obtained using only micro-tremor recordings on the studied building. The variation of the frequency and damping factor during the three stages of the building went through allows to evaluate its rigidity changes, and therefore to control the quality of retrofitting and strengthening.

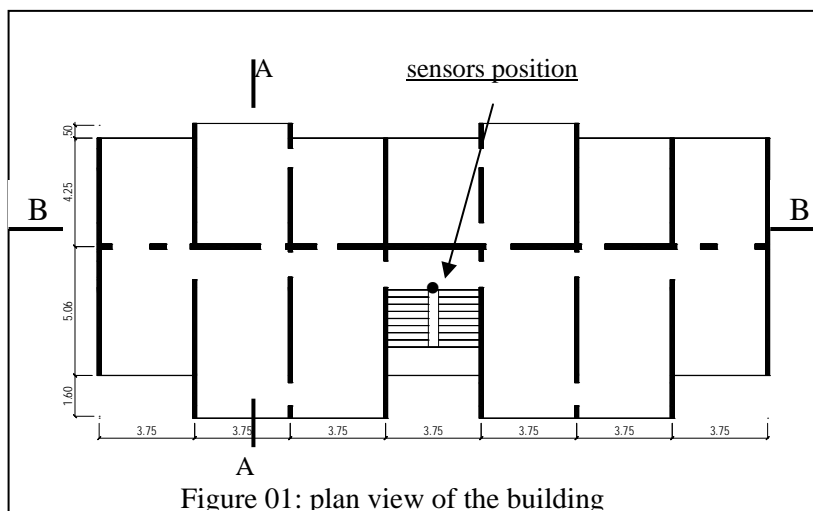
KEYWORDS: retrofitting, strengthening, Boumerdes Earthquake, rigidity evaluation

1. INTRODUCTION

The building damaged by the magnitude 6.8 Boumerdes earthquake (Central North region of Algeria) of May 21st, 2003, is located in the COSIDER neighborhood at Bordj-El-Bahri city, 30 Km East of Algiers city and about 30 Km West of Boumerdes city. It is composed by one underground of 2.5 m height and six stories of 3.0 m height (, photo 01 and figures 02 and 03). The resistant structure is made of 9 transversal RC shear walls of 15 cm thick and one longitudinal RC shear walls 20 cm thick (figure 01). The floors have 15 cm thick RC slab. The building is founded on a 40 cm thick RC mat foundation. The principal and lateral facades are constituted by pre-cast RC elements as shown on photo 01.



Photo N° 01: front view of the building



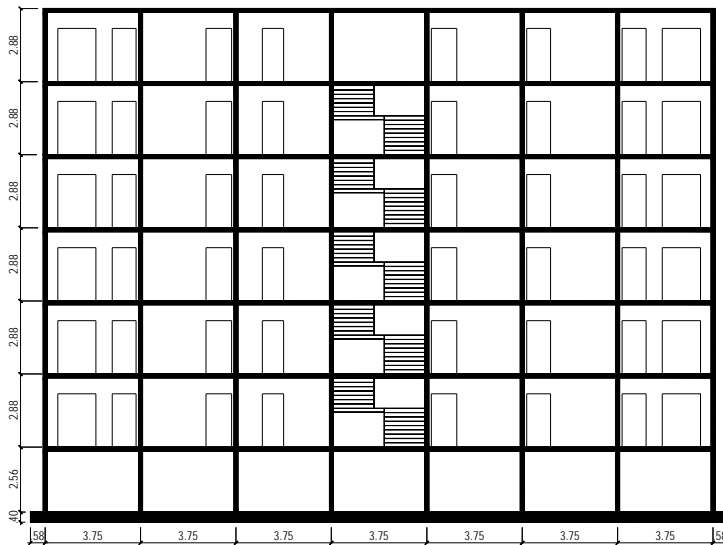


Figure 02: cross section BB

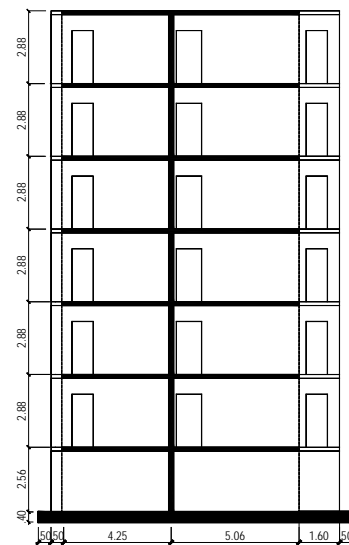


Figure 03: cross section AA

2. STRUCTURAL DAMAGE

The building is oriented, in its longitudinal direction, along the fault direction, i.e. in the same direction as the fault (figure 04). In this longitudinal direction the building rigidity is insufficient because there is only one eccentric shear wall (figure 01). The damages were located therefore on this shear wall at the first and the second levels and resulted in cracks of shearing that reached more than 10cm of opening in some places (photos 02 and 03). The buildings that are perpendicular to the fault directional effect exhibit practically no damage due to the strong rigidity in the transversal direction. The reinforcement of this longitudinal shear wall is made by 2 tablecloths of diameter 12mm steel bars constituting a mesh of 20cm x 20cm. Four steel bars forming a column of 20cm x 20cm cross section (figure 05) are put at each extremity to rigidify the openings. As shown in the figure 05, the more seismic loaded lintels are also reinforced by four steel bars.

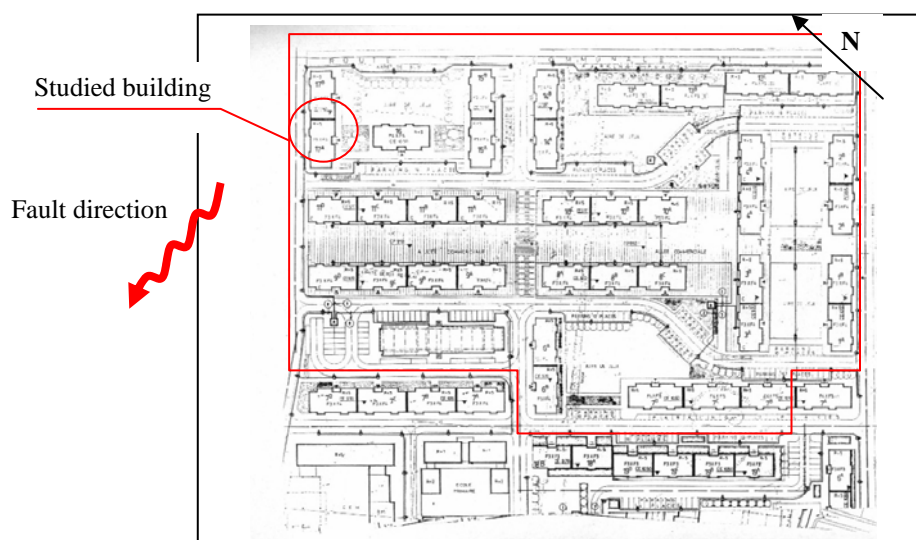
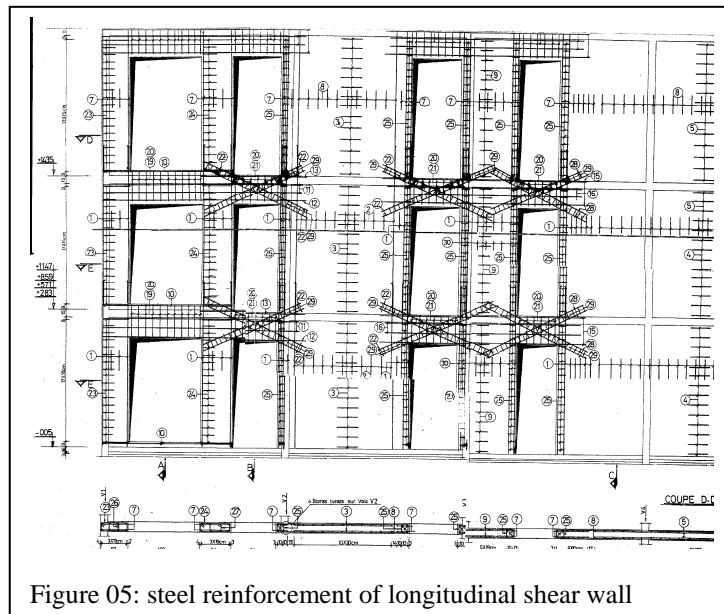


Figure 04: General plan of the COSIDER neighborhood



3. DYNAMIC ANALYSIS

A dynamic analysis has been done using a finite elements method to estimate the frequencies and the damping of the building before earthquake.

The hypotheses considered are the following:

Density of concrete: 25 KN/m³

Elasticity modulus of concrete: $2.3 \cdot 10^7$ KPa

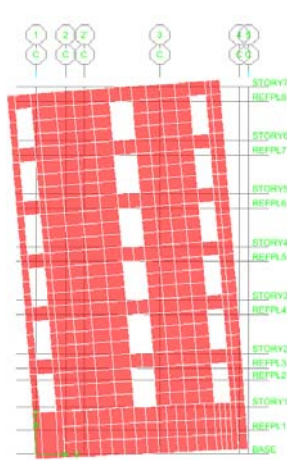


Figure 07: Mode 1 (transversal)

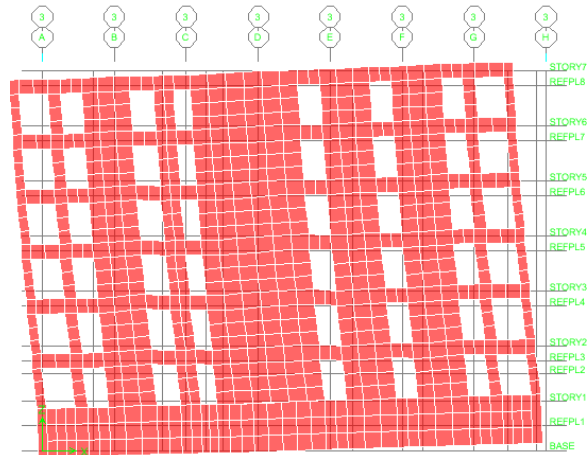


Figure 08: Mode 2 (longitudinal)

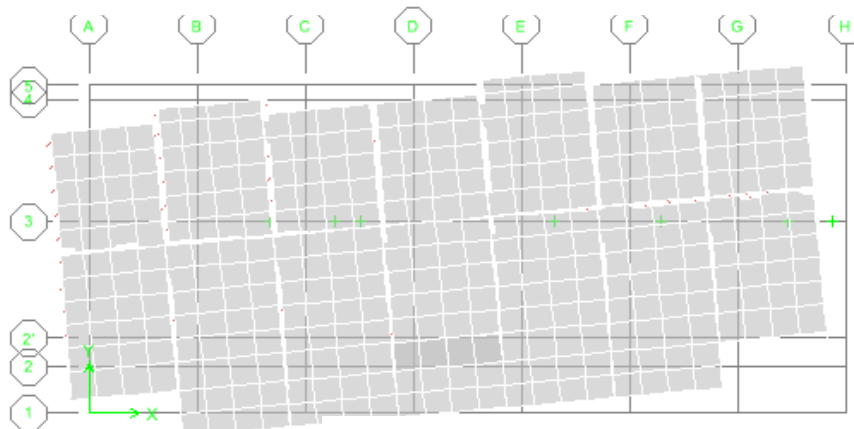


Figure 09: Mode 3 (torsion)

The ambient vibration data analysis, based on an antitrigger procedure, has given the following frequencies as shown in figure 10.

Before earthquake: transversal direction 3.61 Hz, longitudinal direction 4.20 Hz

Damaged state: transversal direction 3.22 Hz, longitudinal direction 2.07 Hz

After repairing: transversal direction 3.80 Hz, longitudinal direction 5.10 Hz

We can note here that the earthquake did not really affect the building in the transversal direction. The retrofitting has increased very slightly the rigidity in this direction represented by the retrofitting of the wings of the transversal shear walls.

In the longitudinal direction, the building had lost a significant part of its rigidity, about 50%, after earthquake occurrence. This is probably due to the coincidence between the building direction and the fault directional effect, i.e. the highest acceleration.

The repairing and retrofitting, as explained above, have strongly rigidified (5.1 Hz) the longitudinal direction but more than the initial state (4.20 Hz). Based on these results we can admit that the repairing and retrofitting operation has been a success and the choice technique is good. However, looking on the modal shapes (figure 11 a and b) we can note that, if on the first level the building is more rigid than on the other levels (that is normal because of the retrofitting), on the third level exists a "fracture" which is probably due to no detected micro-cracks.

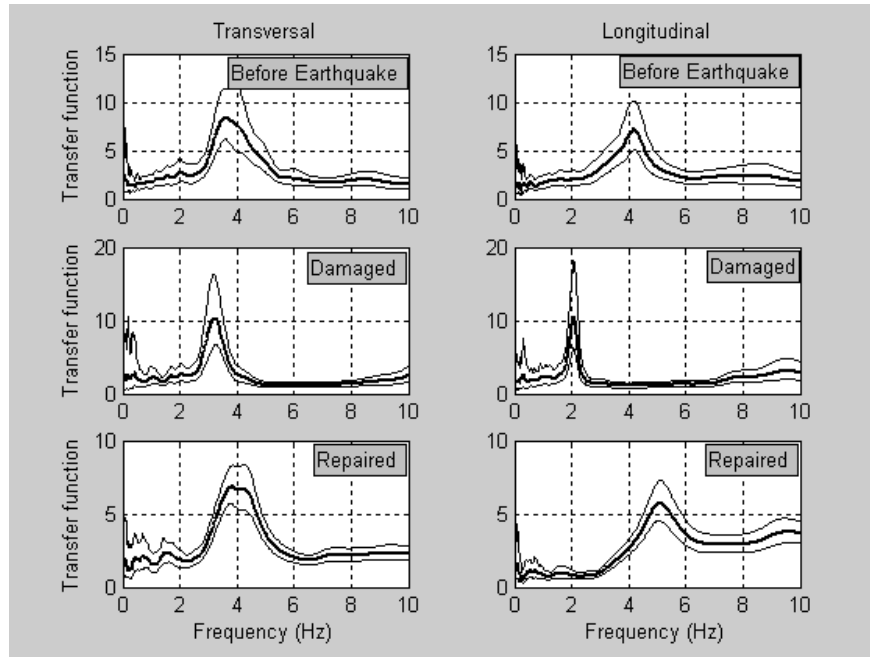
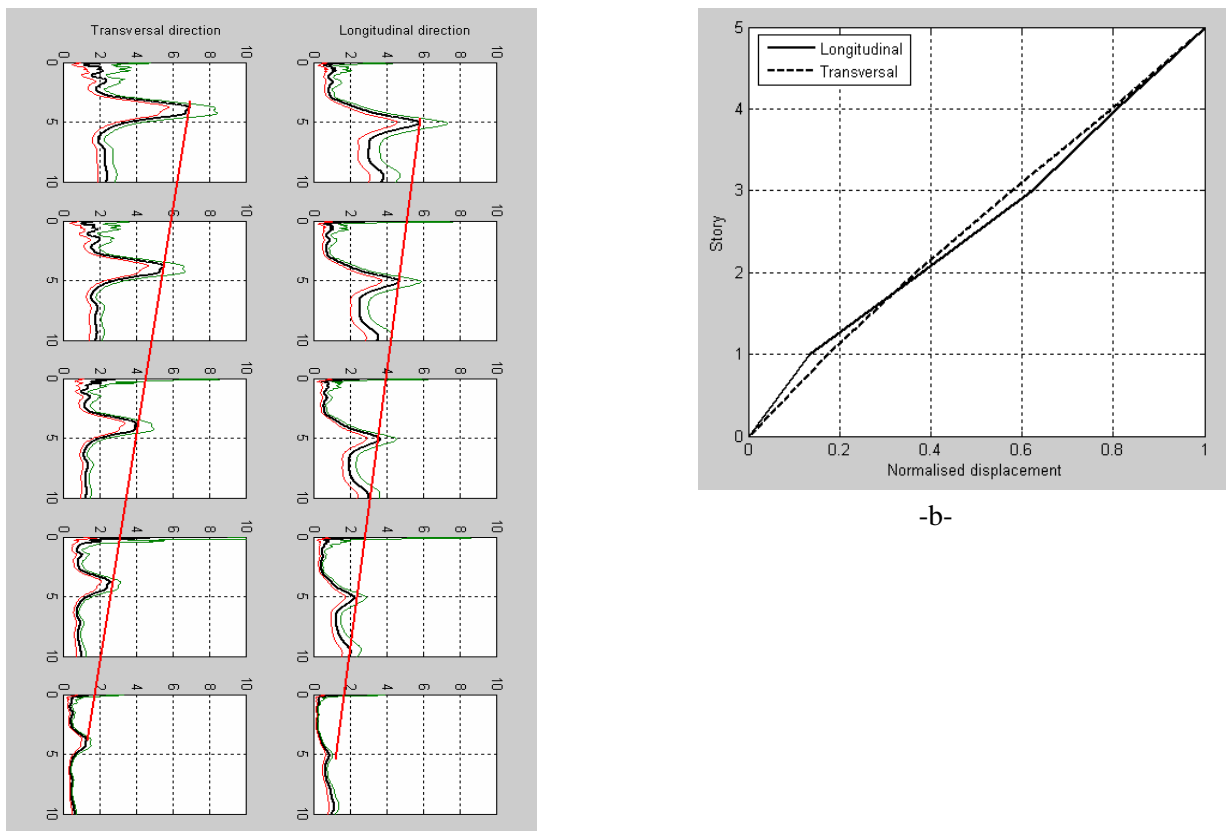


Figure 10: frequency in longitudinal and transversal directions of non-damaged, damaged and repaired building



-a-

-b-

Figure 11: modal shape of first mode



6.2. Damping

The damping value considered in the dynamic analysis is 10% for shear wall resisting system according to Algerian the seismic code.

For the analysis using ambient vibrations, damping was estimated using random decrement method. The different values of this damping are shown in table 1:

Table 1: Damping values

	Transversal direction	Longitudinal direction
Before earthquake	3.67%	3.03%
Damaged state	2.14%	1.77%
After retrofitting	3.67%	5.80%

7. CONCLUSION

Frequencies and damping evaluations are very good techniques to detect the change in rigidity of a structure. A decrease of rigidity proves the existence of damages in the structure. In the case of the present studied building, the frequency in the longitudinal sense that fell of practically of half shows that the damages are important as we can note them on the photos. The measure of the frequency of a building periodically will permit to follow its health in the time.

The techniques of repair and retrofitting that have been adopted are efficient since the building recovered its initial state, which means its initial capacity of resistance.

The calculated frequencies with numeric modeling and the dynamic analysis are in the same order that those valued estimated from ambient vibrations. The damping input value (10% generally adopted for the structures in walls carriers made of reinforced concrete) in the numeric analysis is very far from those evaluated from the ambient vibrations. This is probably due to the bad quality of the materials and also to the soil-structure interaction. It is necessary to recognize also that the damping parameter is not easy to estimate that the frequency. Once again we note that the numeric modeling is far to reflect the real behavior of a structure.

It would be useful to carry out more investigations on the neighborhood buildings and soils, to better understand what happened and to explain why the damages are so different from one building to other ones sometime very close.

9. REFERENCES

- Boutin C., Hans S., Erdin I., and Loriot M., (1999). Approche de la vulnérabilité sismique par l'étude du comportement de bâtiments réels, *Rapport de recherche ENTPE, Lyon, 1999*.
- Chatelain, J. L., P. Guéguen, B. Guillier, J. Fréchet, F. Bondoux, J. Serrault, P. Sulpice and J.M. Neuville (2000). CityShark : A user-friendly instrument dedicated to ambient noise (microtremor) recording for site and building response studies, *Seismological Research Letters, Vol. 71(6), 698-703*.
- Dunand F., Bard P.Y., Chatelain J.L., Guéguen Ph., Vassail T. & Farsi M.N. (2002). Damping and frequency from Randomdec method applied to in situ measurements of ambient vibrations. Evidence for effective soil structure interaction. *Proceeding of the 12th European Conference on Earthquake Engineering, paper n° 869, Londres, 2002*.



- Farsi M. N., (1996). Identification des structures de génie civil à partir de leurs réponses vibratoires, *Thèse de doctorat de l'Université Joseph Fourier, Grenoble, 1996.*
- Nakamura, Y., (1989). A method for dynamic characteristics estimation of subsurface using microtremor on the ground surface. *QR of R.T.R., 30-1.*

Aknowledgement

The authors gratefully acknowledge Mr Saichi, Technical Director and Mrs Bensalem, Civil Engineer at COSIDER Enterprise who have provided us drawings of the buildings and facilitated to us the access in the building to get recordings.